



Statistical Update on Aircraft Operations

November 9, 2016

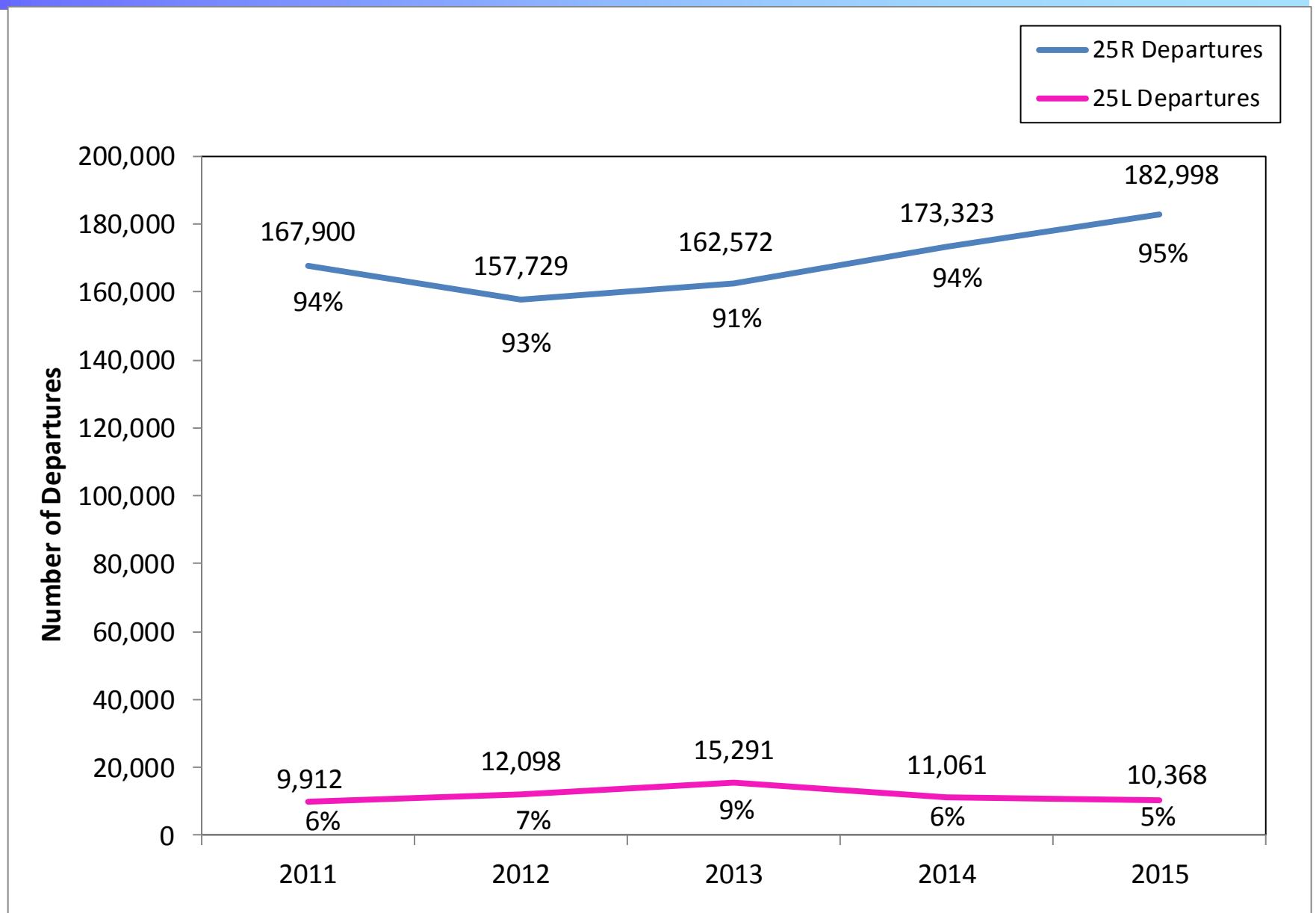
LAX/Community Noise Roundtable

Overview

Statistical information on the following operations:

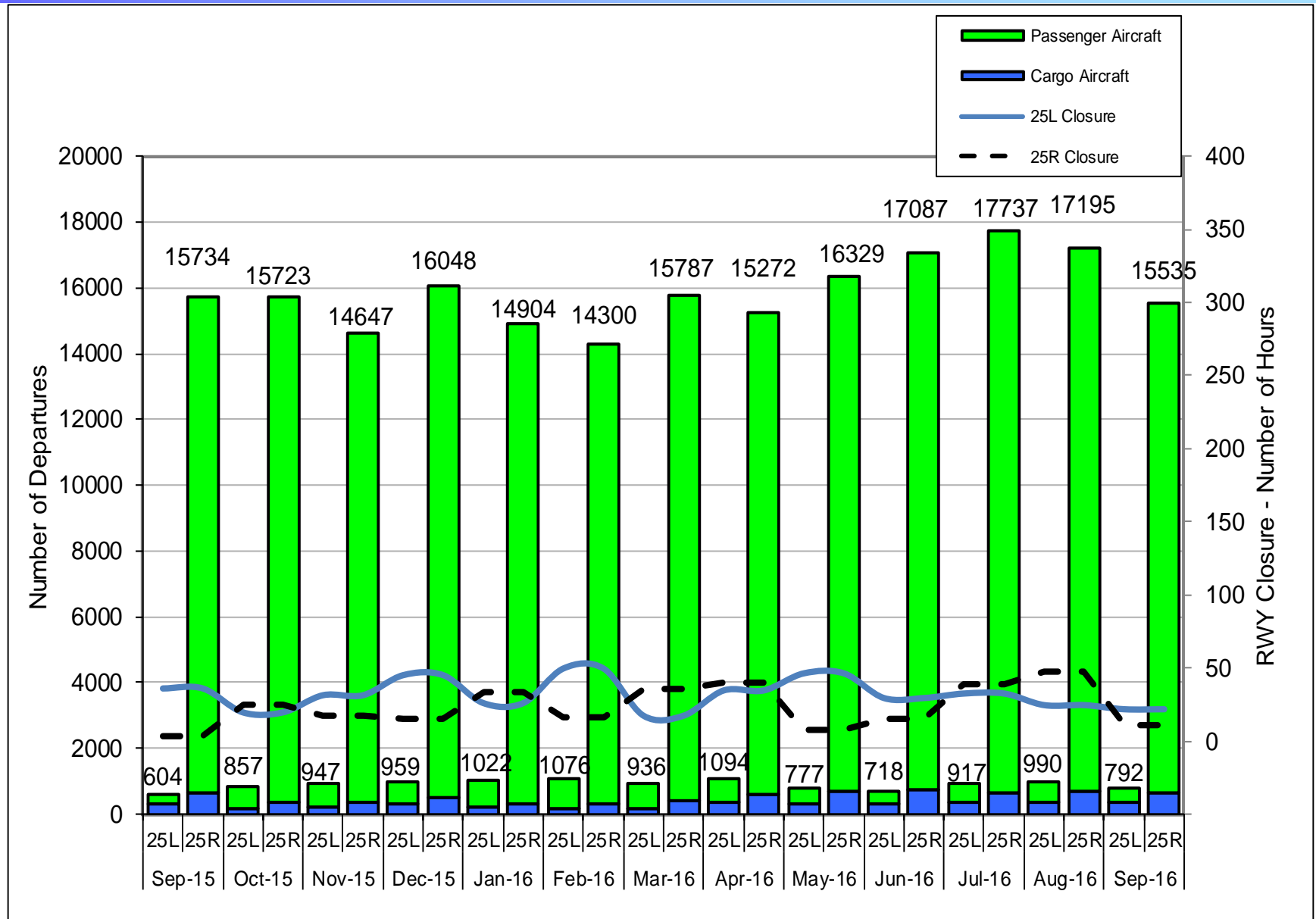
- 25L Departures
- Palos Verdes Overflights

Departures – Runways 25L and 25R Annual Comparison

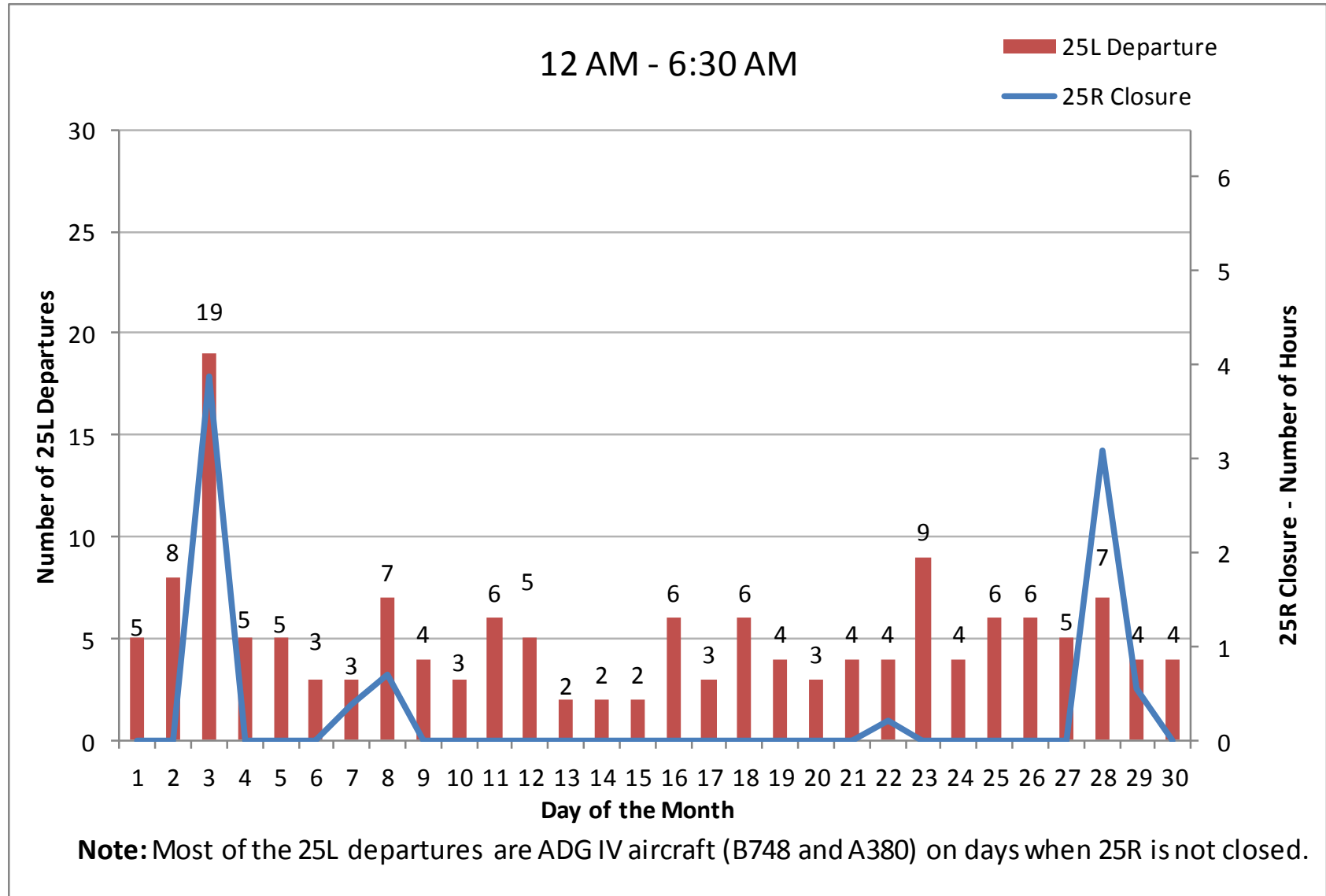


Departures – Runways 25L and 25R

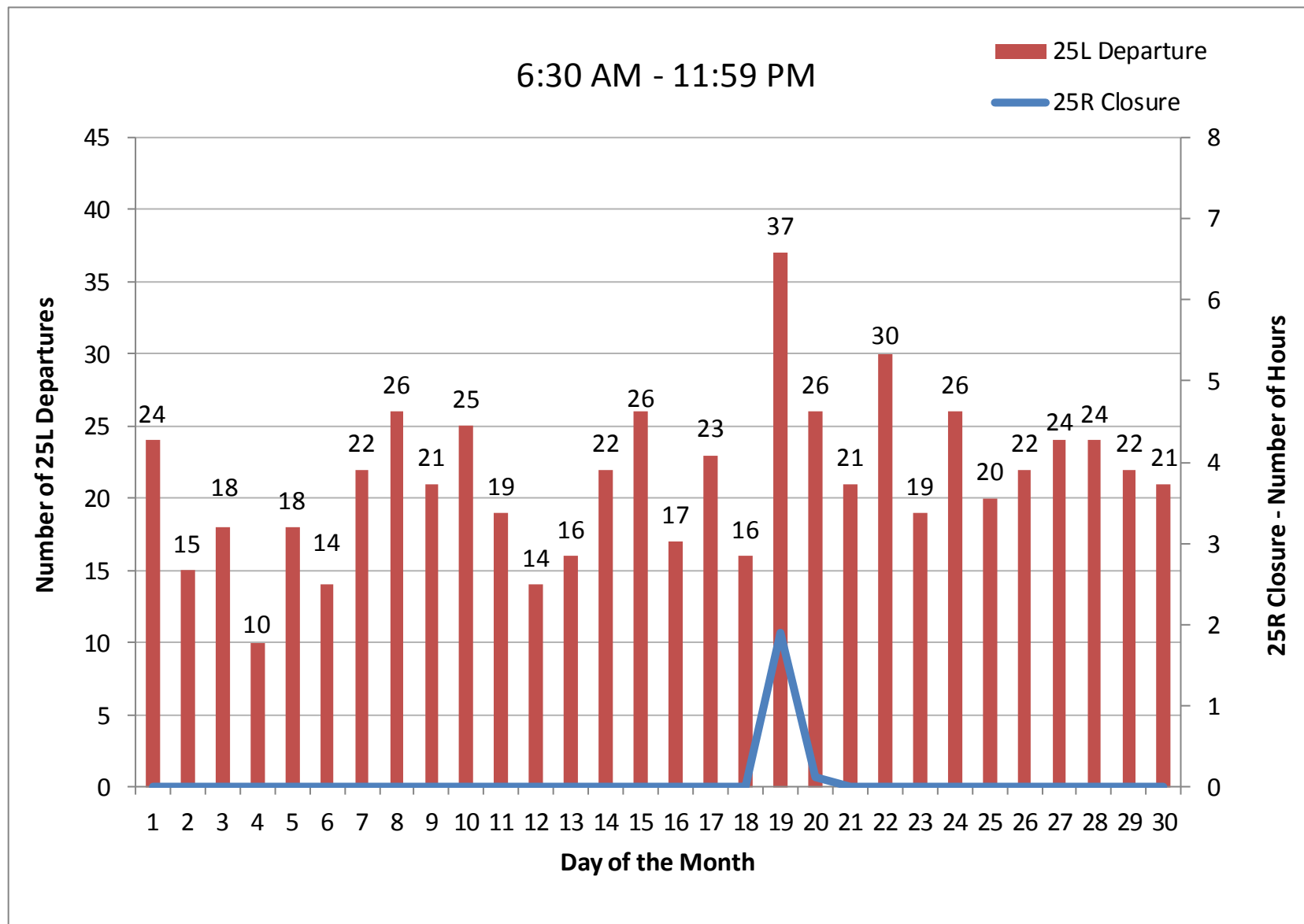
13-month period



25L Departures September 2016



25L Departures September 2016

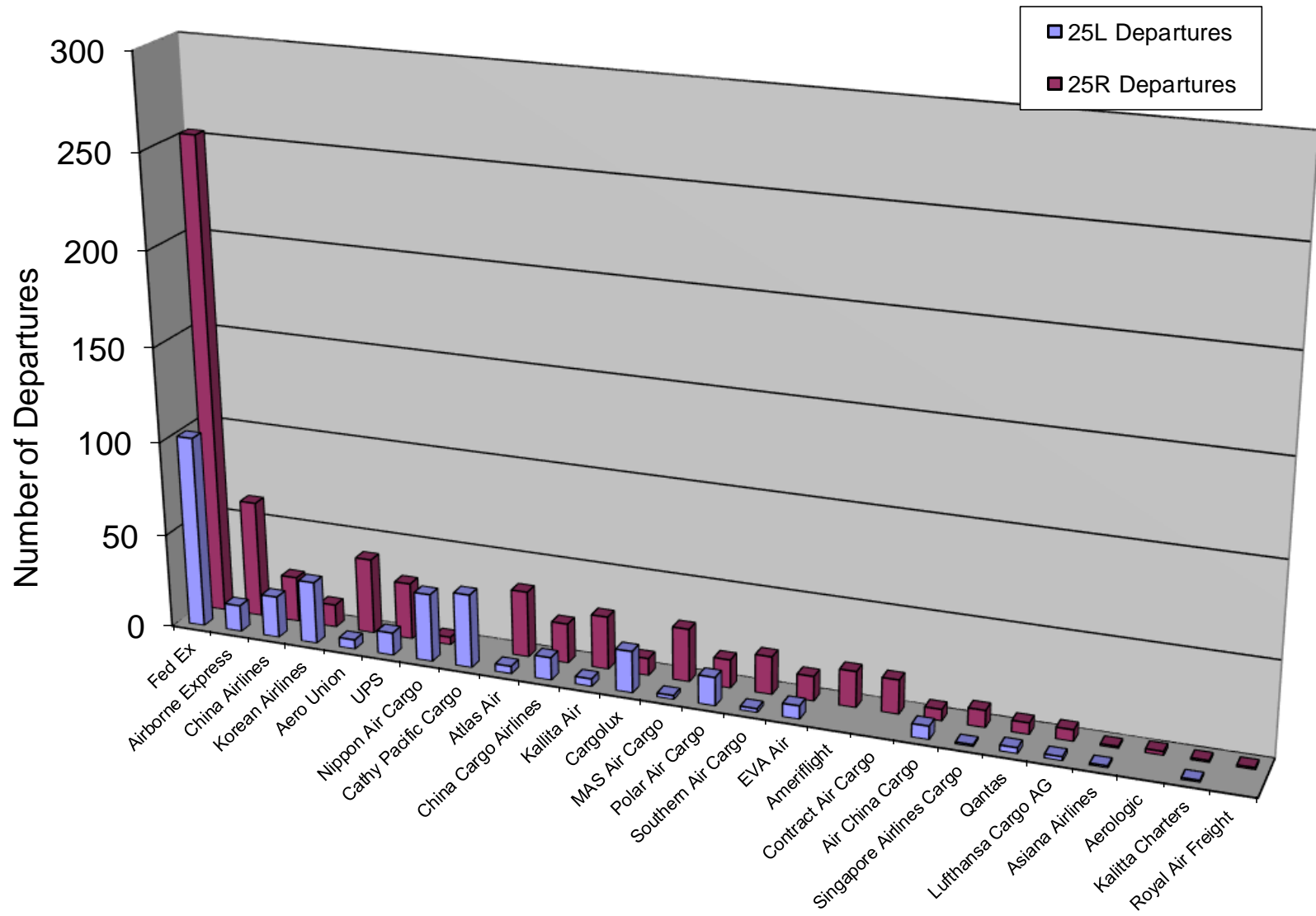


Departures by Aircraft Category September 2016

6:30 AM - 11:59 PM			
<i>Aircraft Category</i>	<i>25L Departures</i>	<i>25R Departures</i>	<i>Total</i>
Passenger	1%	99%	12468
General Aviation	21%	79%	597
Cargo	42%	58%	776
Total	5%	95%	13841

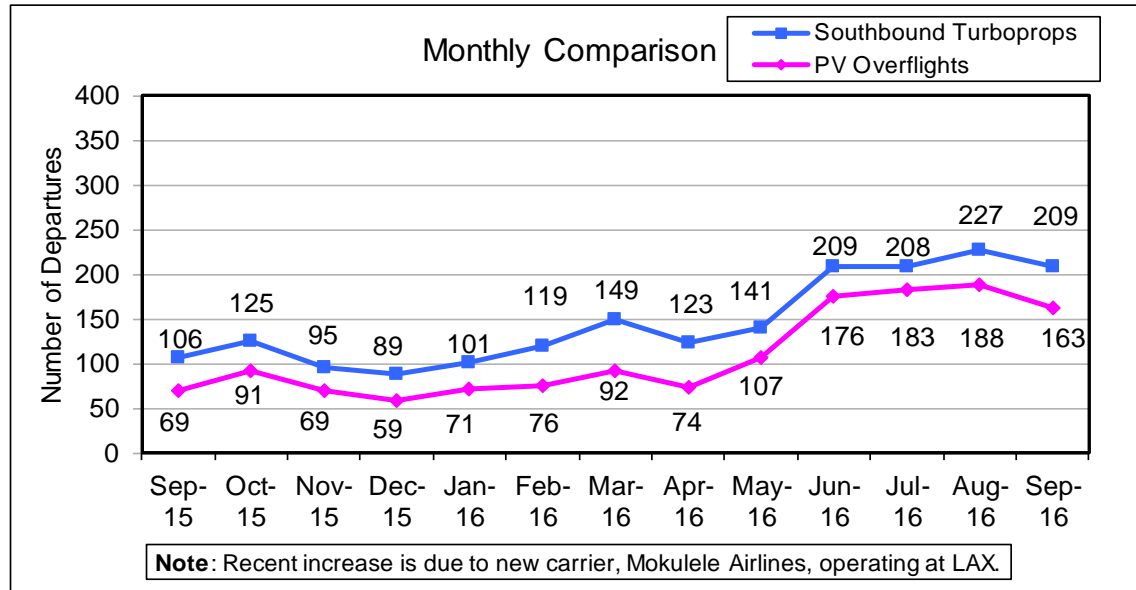
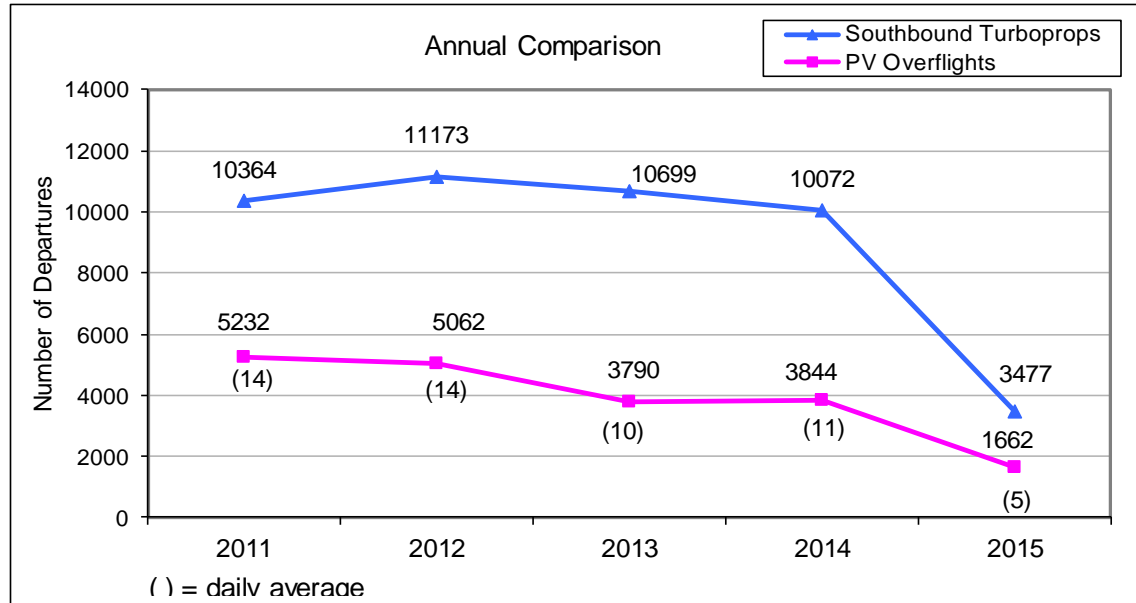
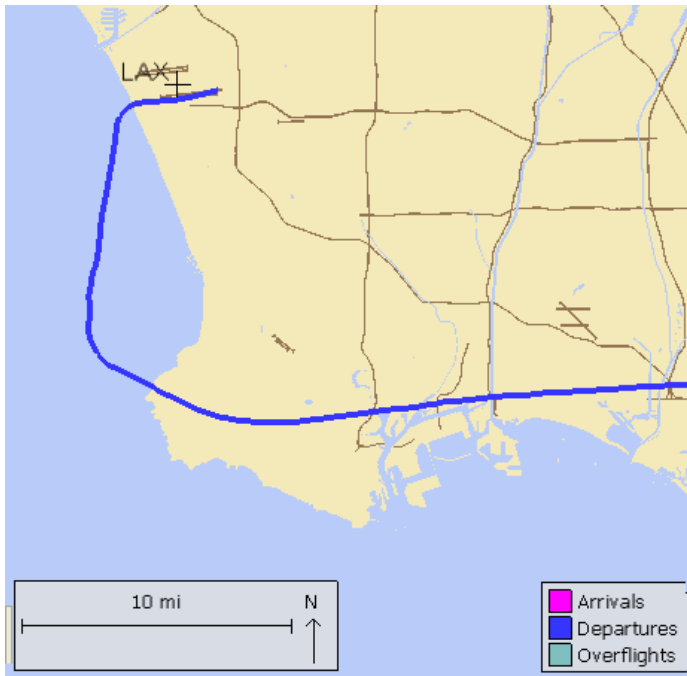
12 AM – 6:30 AM			
<i>Aircraft Category</i>	<i>25L Departures</i>	<i>25R Departures</i>	<i>Total</i>
Passenger	2%	98%	1725
General Aviation	0%	100%	35
Cargo	16%	84%	709
Total	6%	94%	2469

Cargo Departures on 25L & 25R by Operator September 2016



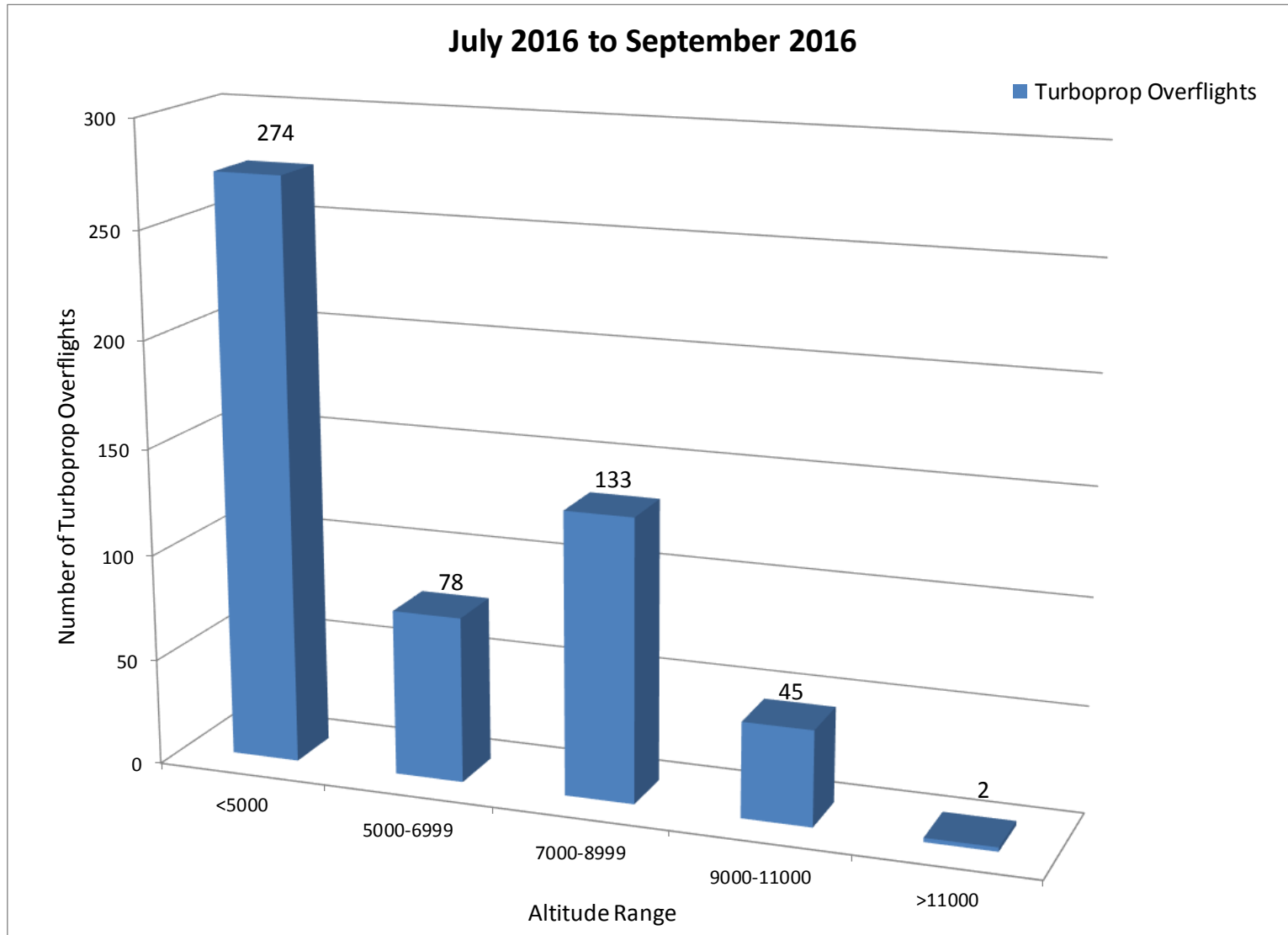
Palos Verdes Peninsula – Turboprop Overflights

Monitoring southbound turboprops departing from LAX that overfly Peninsula

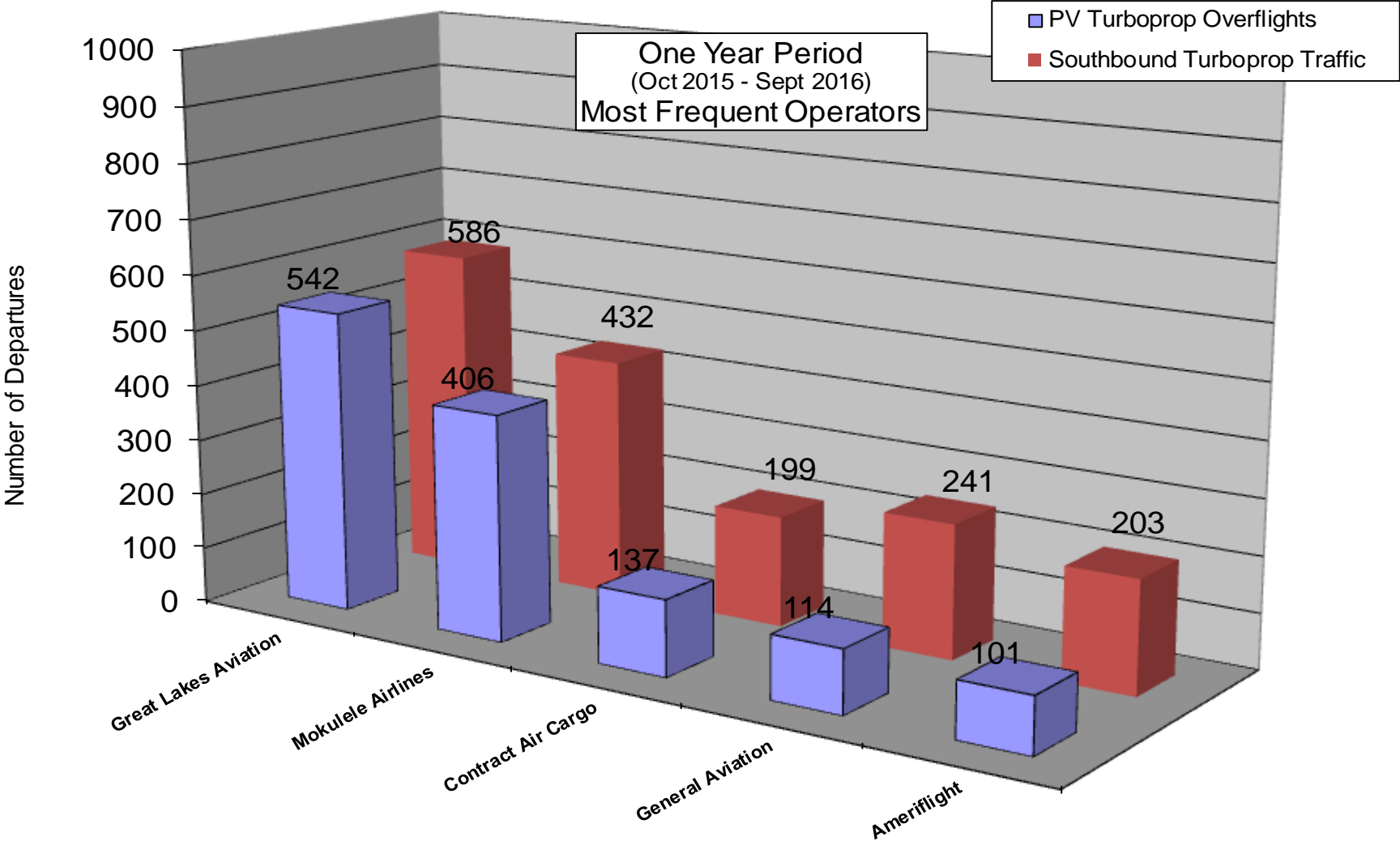


Note: Prior to SkyWest’s fleet mix change (turboprop to jet) in early 2015, monthly southbound turboprops were ~800 and PV overflights were ~300.

Turboprop Altitudes over PV

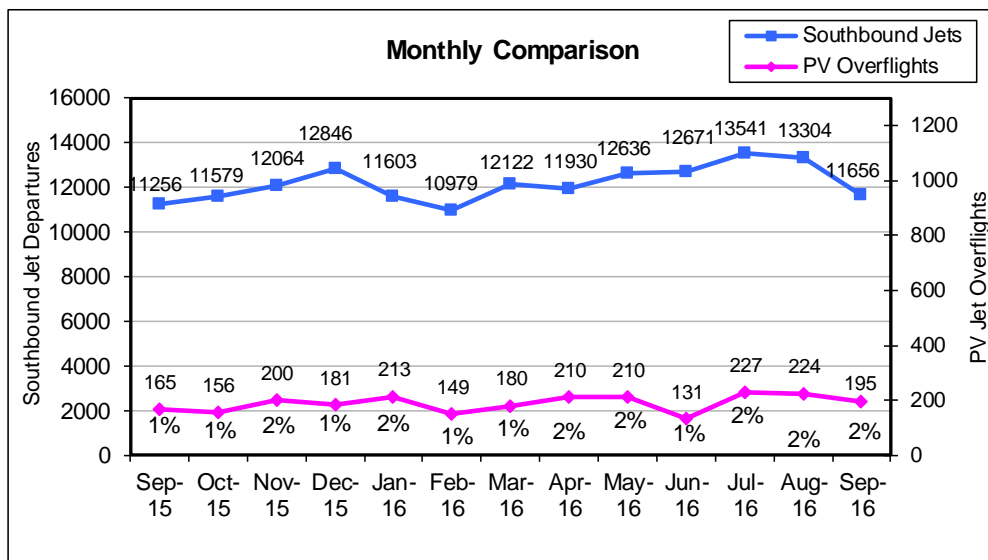
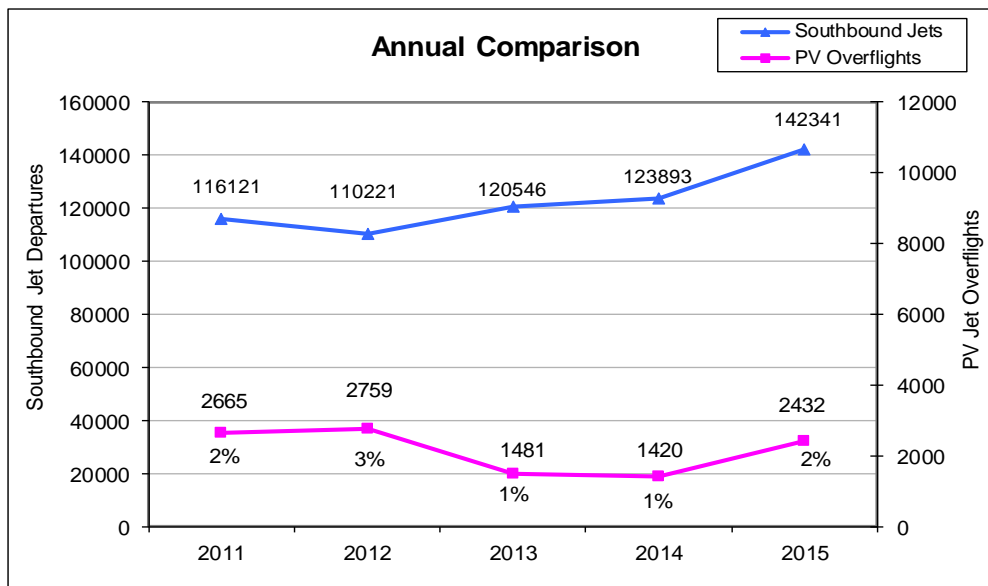


Turboprop Operators



Palos Verdes Peninsula – Jet Overflights

Monitoring southbound jets departing from LAX that overfly Peninsula



Jet Altitudes over PV Peninsula

