

*LAX/Community Noise  
Roundtable*

Information on Aircraft In-Flight Procedures  
for Calendar Year 2007

Los Angeles World Airports  
Noise Management Division

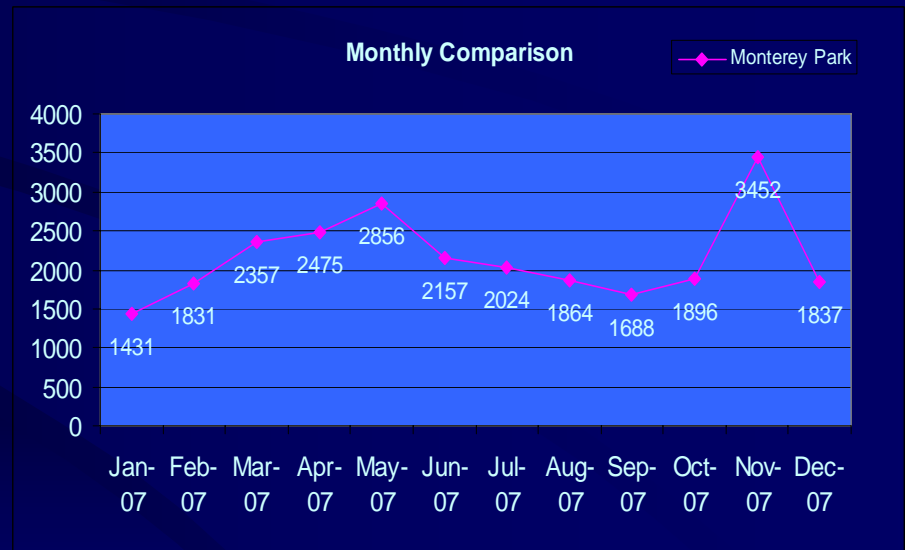
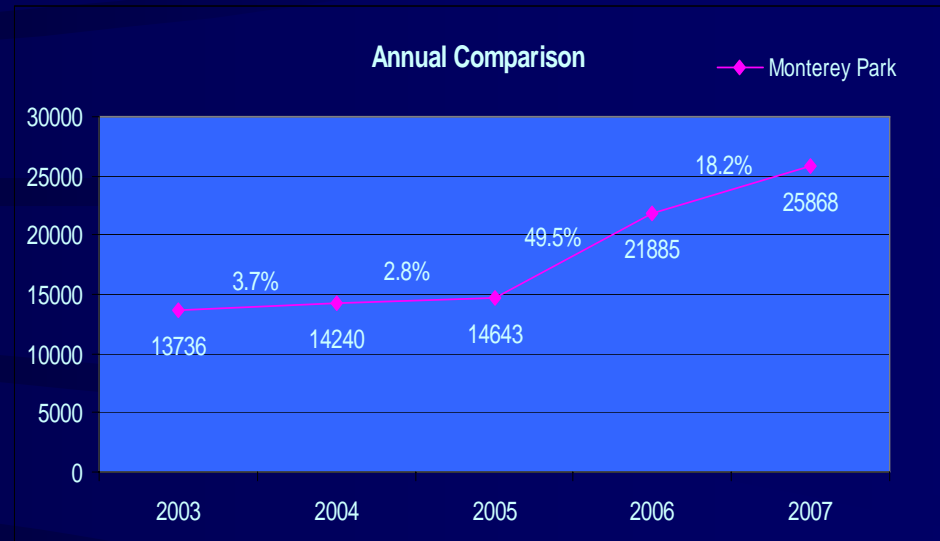
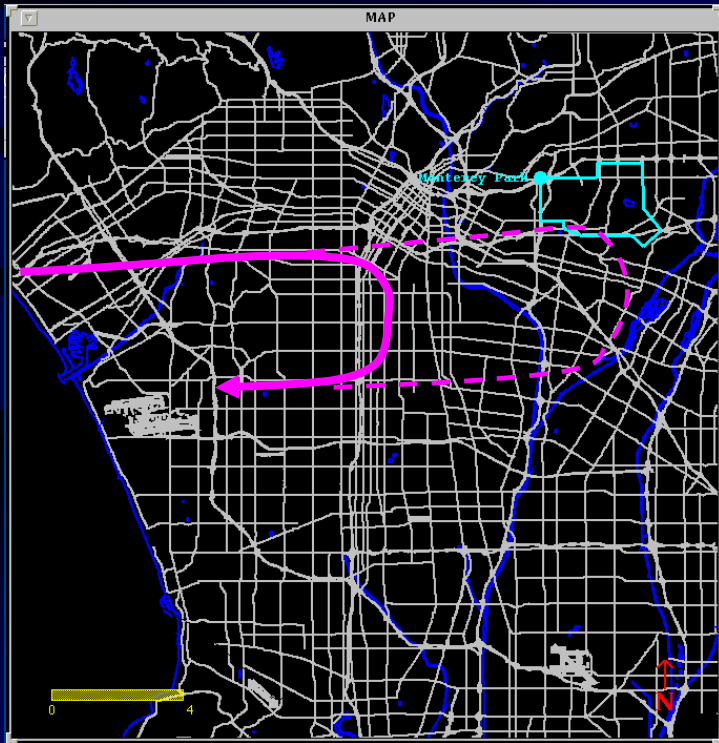
# Overview

**Statistical information on the following operations:**

- **Extended Downwind Approach**
- **Short Turns**
- **Go-arounds**
- **East Departures**
- **Early Turns**
- **Loop Departures**
- **Palos Verdes Overflights**

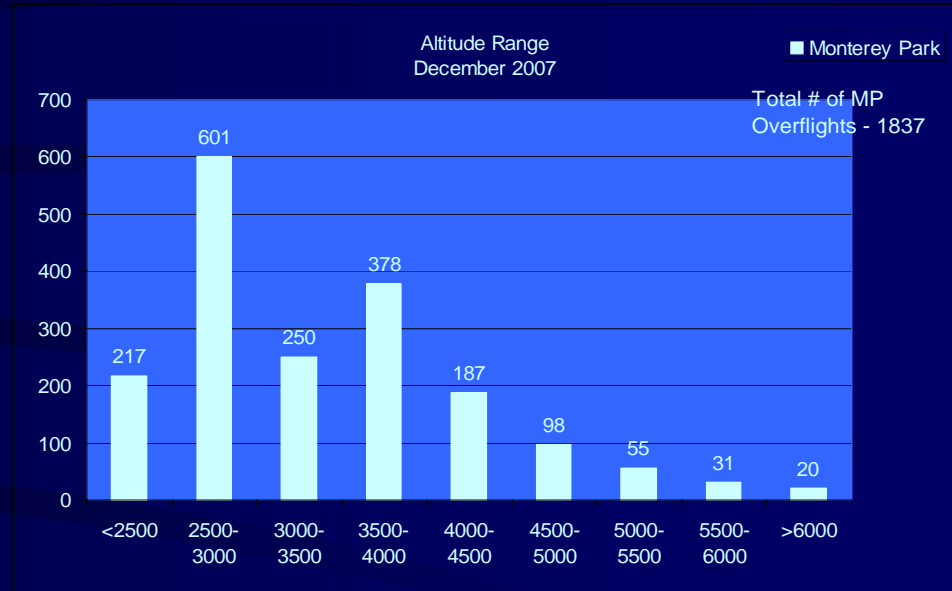
# Extended Downwind Approach

Monitoring north arrivals extending downwind over Monterey Park boundary

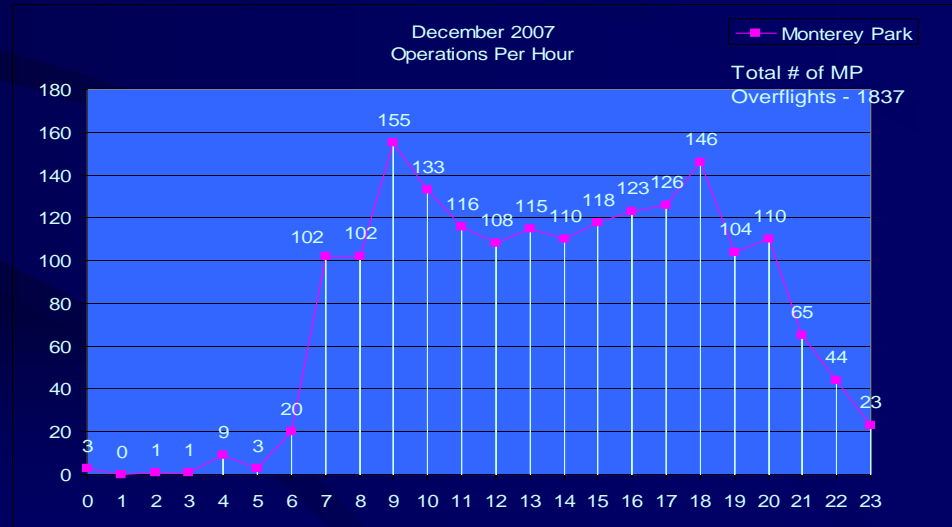


# Extended Downwind Approach December 2007

Altitude over  
Monterey Park

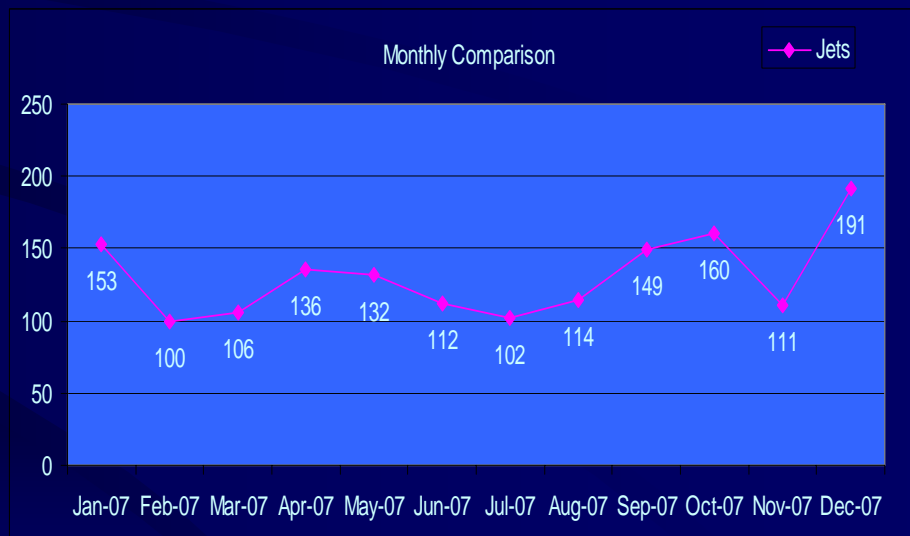
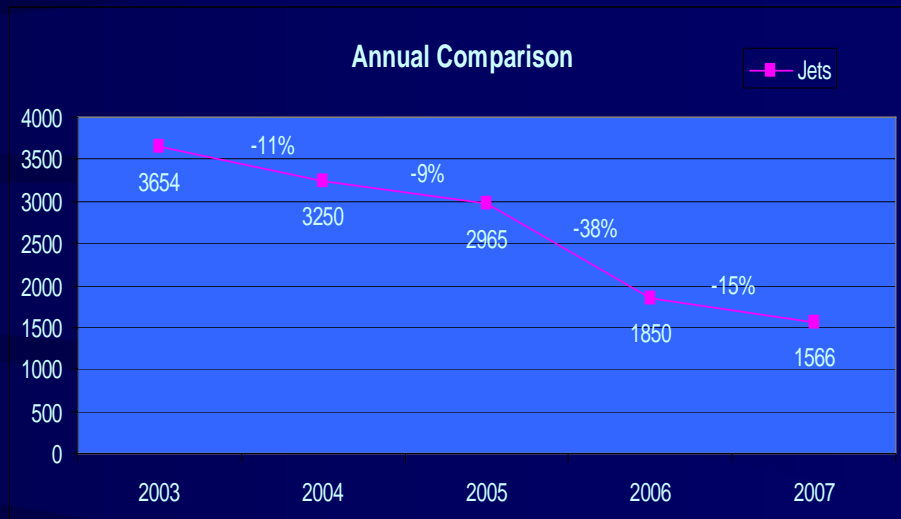
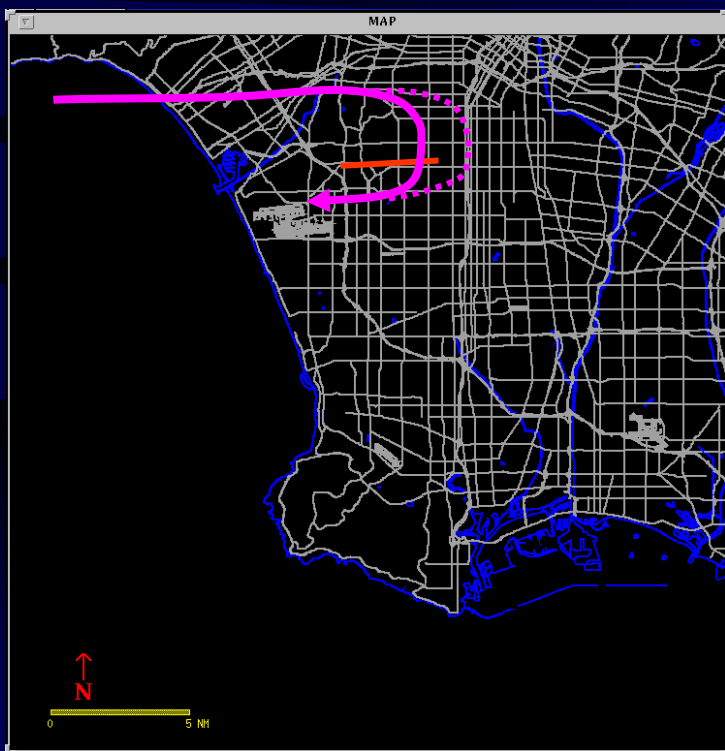


Number of  
Operations By  
Time of Day



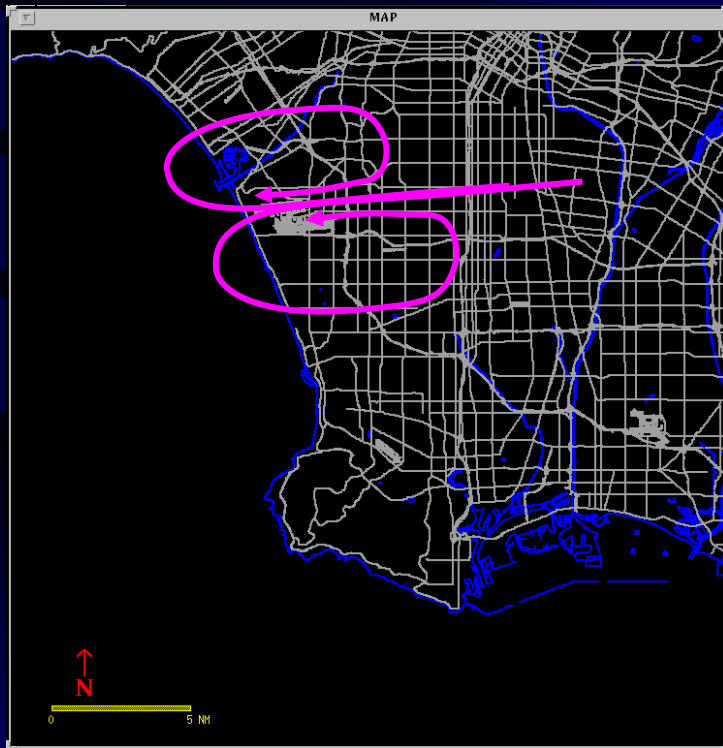
# Short Turn Arrivals

Arriving jet aircraft to fly base leg of arrival over or east of the Harbor Freeway

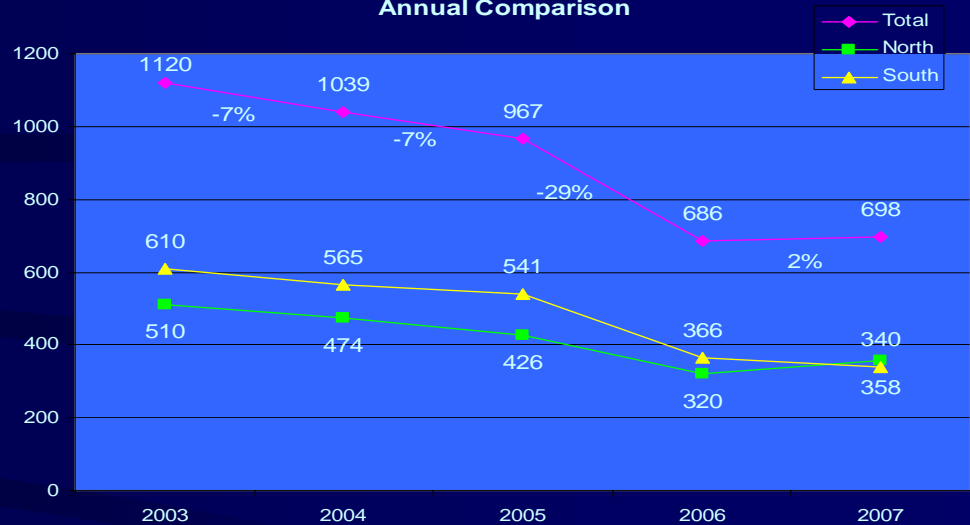


# Go-Arounds

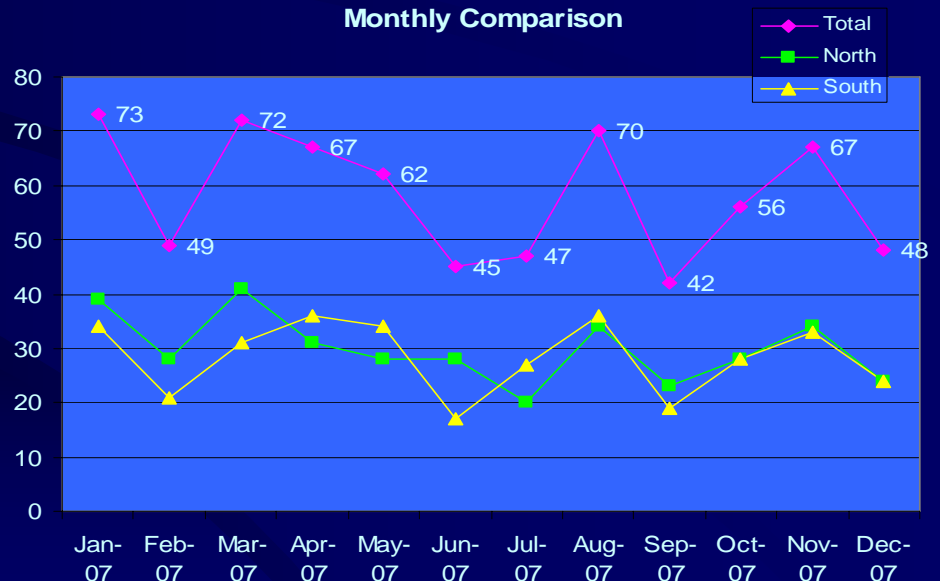
Monitoring pilot or ATC initiated go-arounds or missed approaches



Annual Comparison



Monthly Comparison

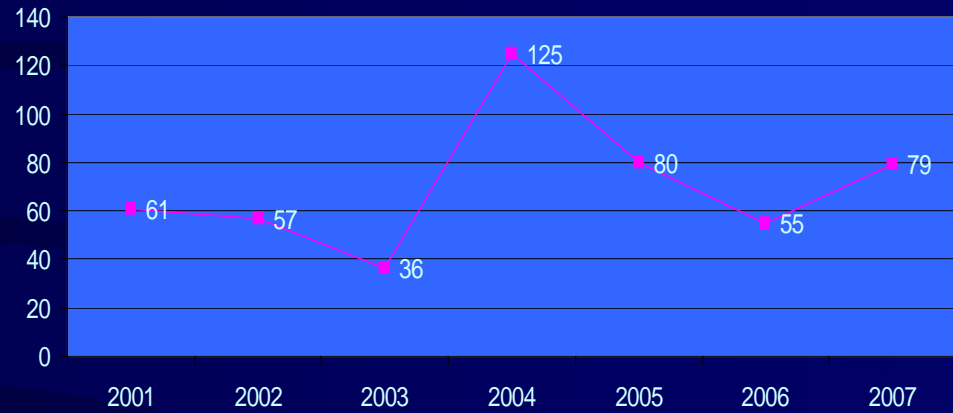


# East Departures Midnight to 6:30 AM

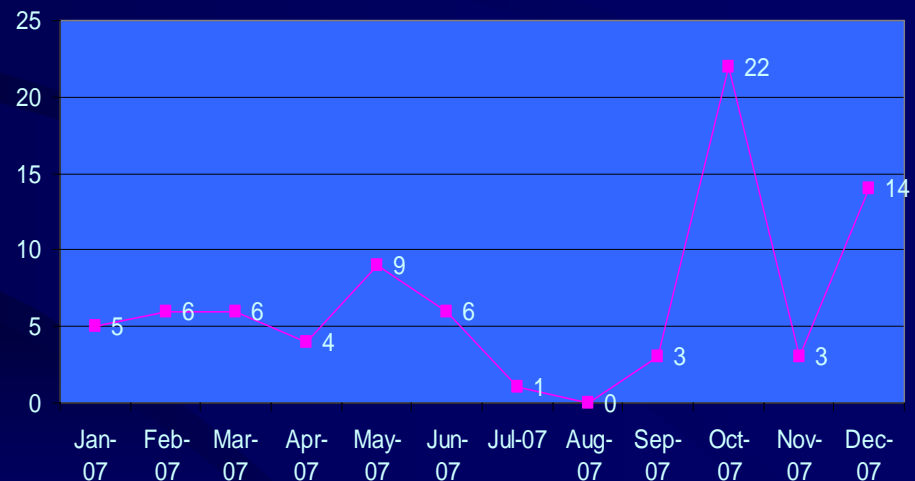
This report shows a summary of aircraft operations that depart to the east while the airport is still conducting westerly departures between midnight and 6:30 a.m. These individual easterly departures usually occur when the pilot of a heavy aircraft (e.g. B747s) determines that the tail wind is too great for the weight of the aircraft and requests to depart east into the wind for aircraft safety.



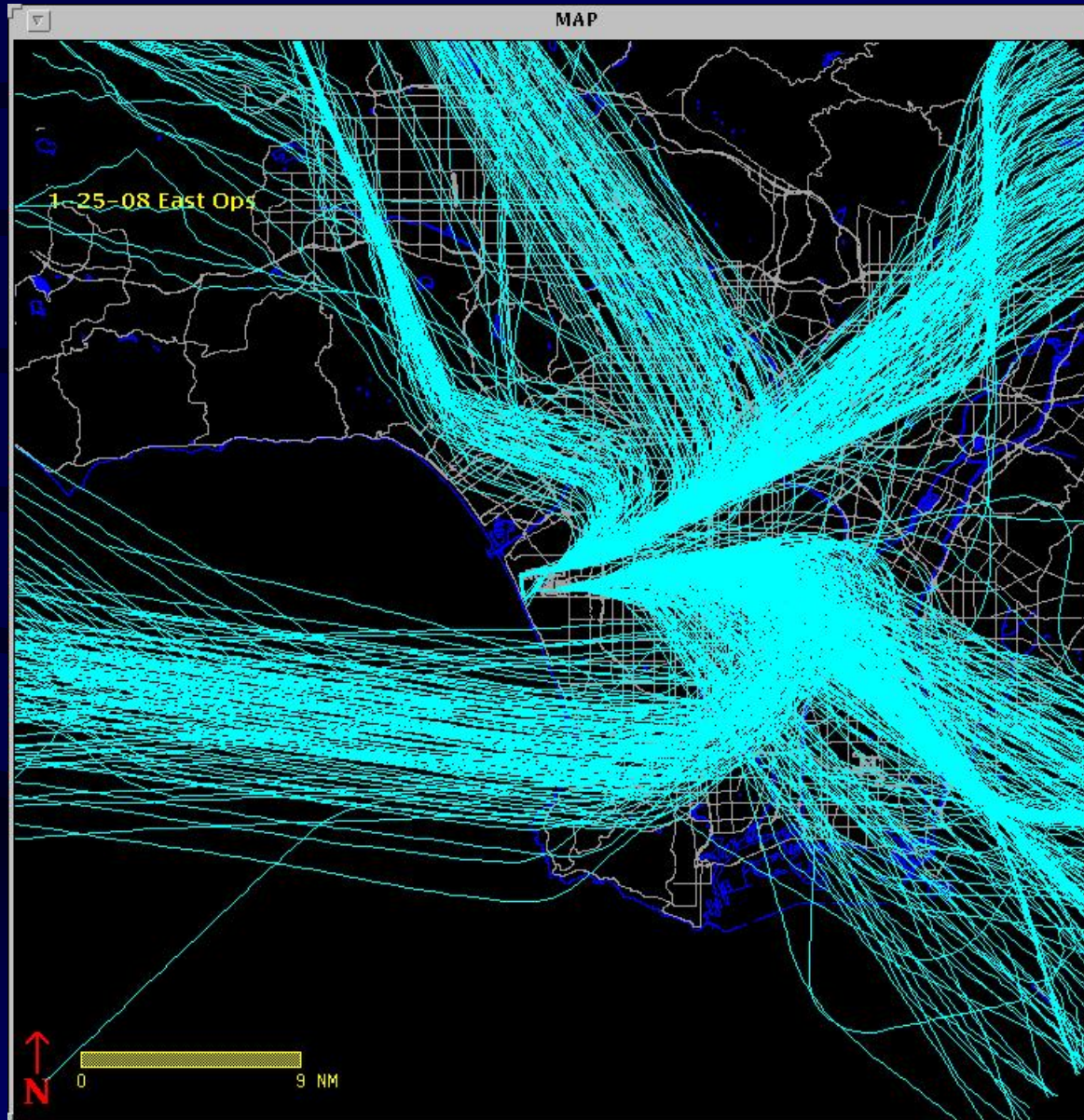
### Annual Comparison



### Monthly Comparison

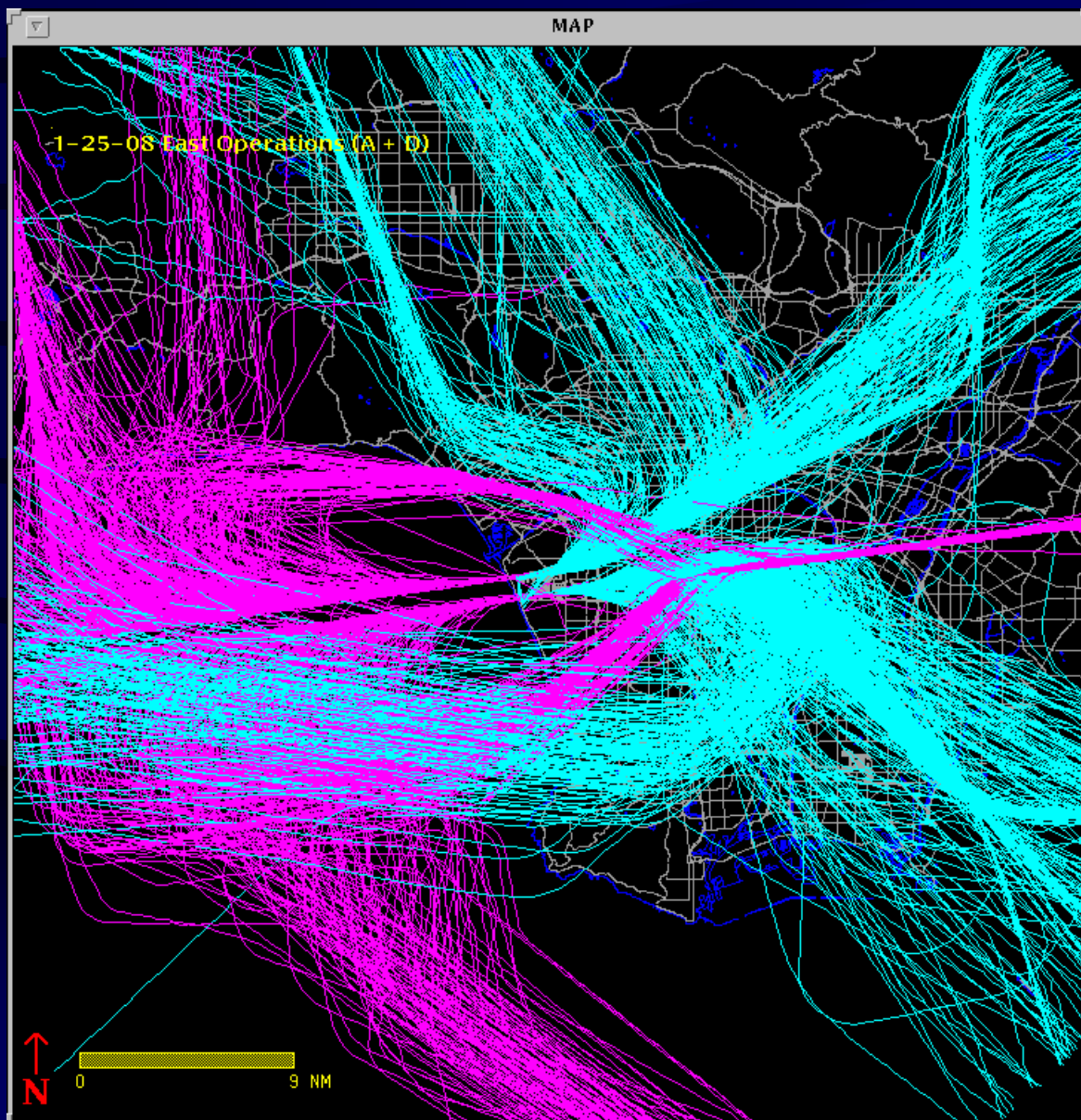


# Sample Easterly Operations – Departure Only

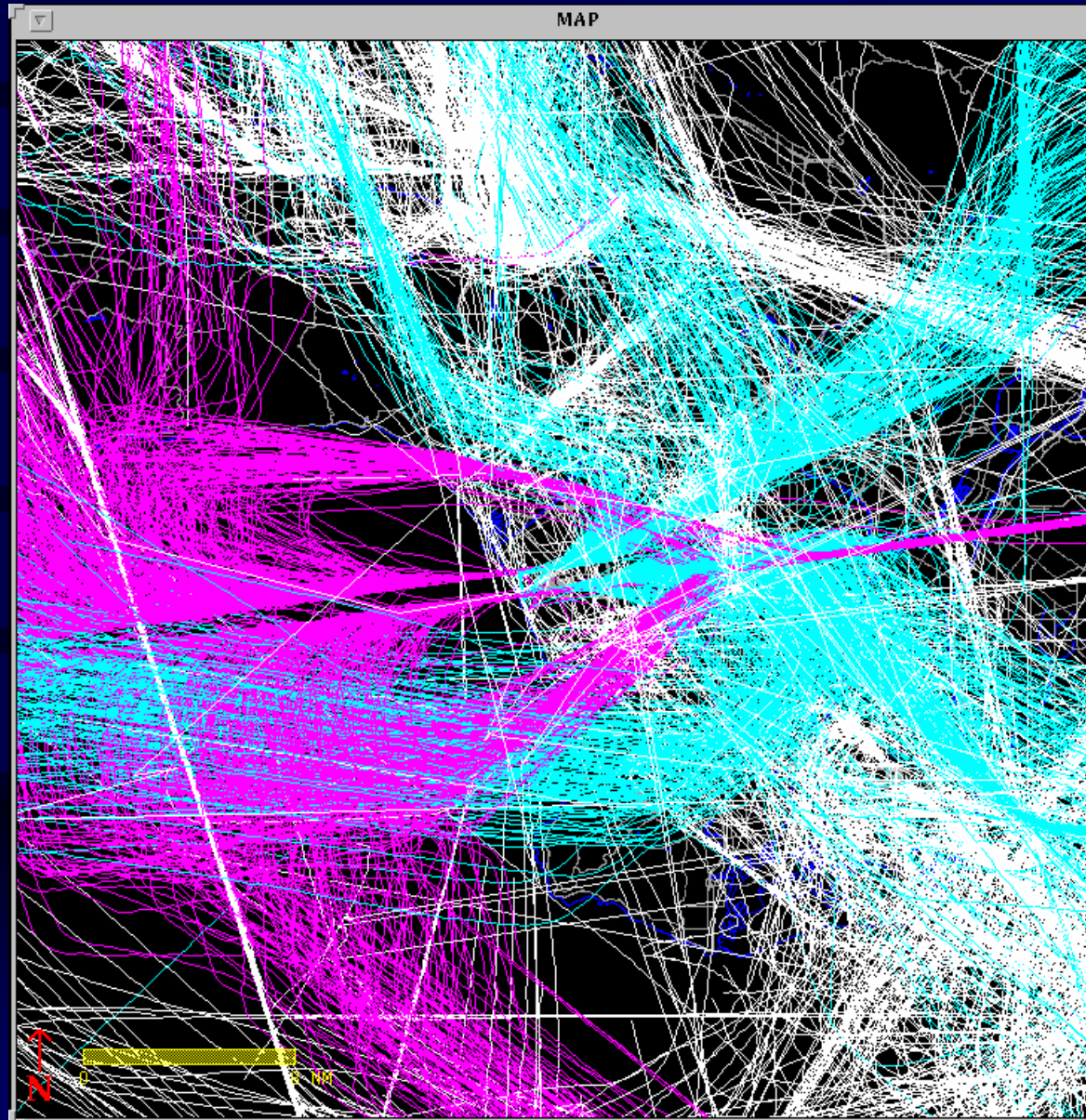




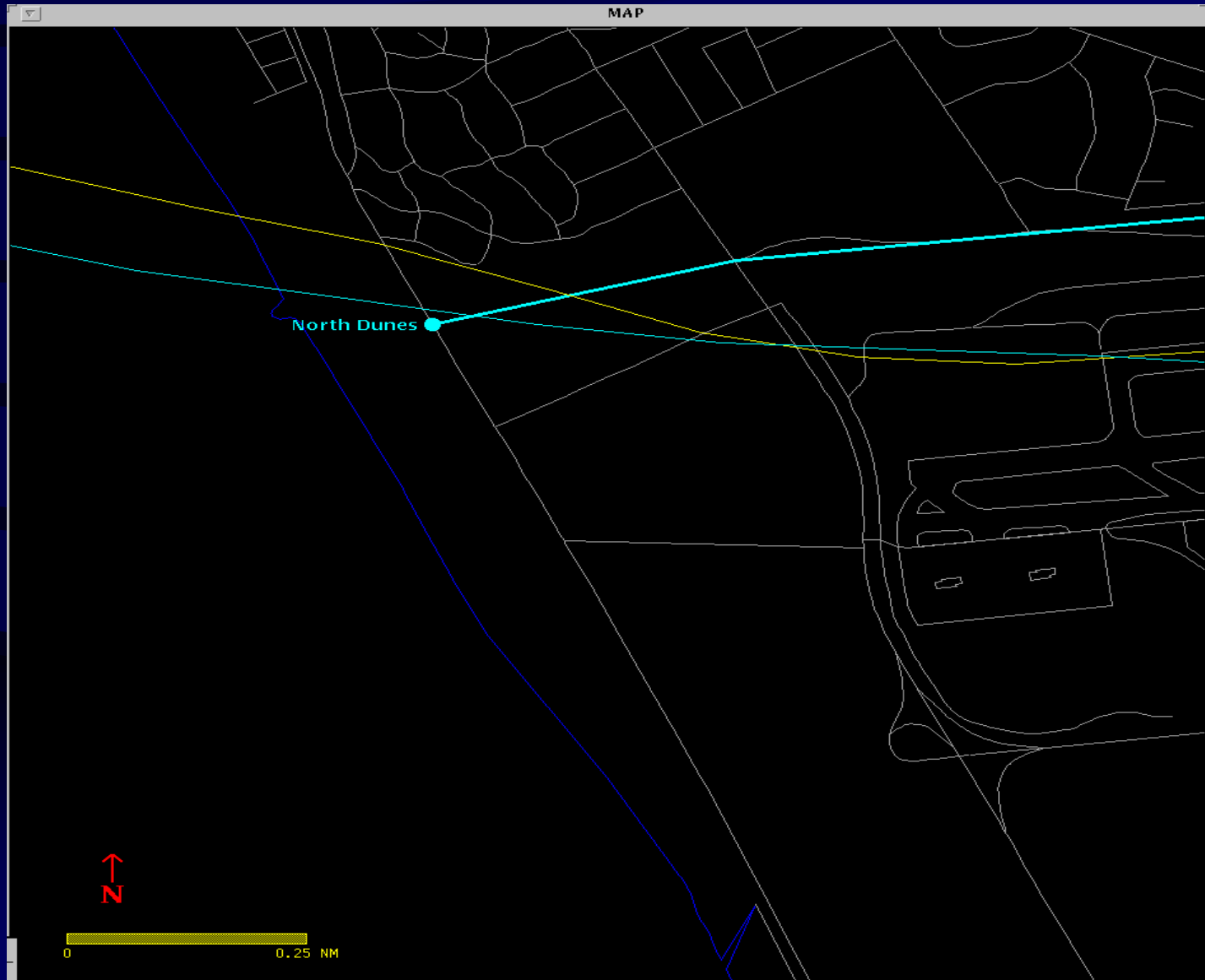
# Sample Easterly Operations – Departure & Arrival



# Sample Easterly Operations – Departure, Arrival & Overflights



# Sample North Early Turns

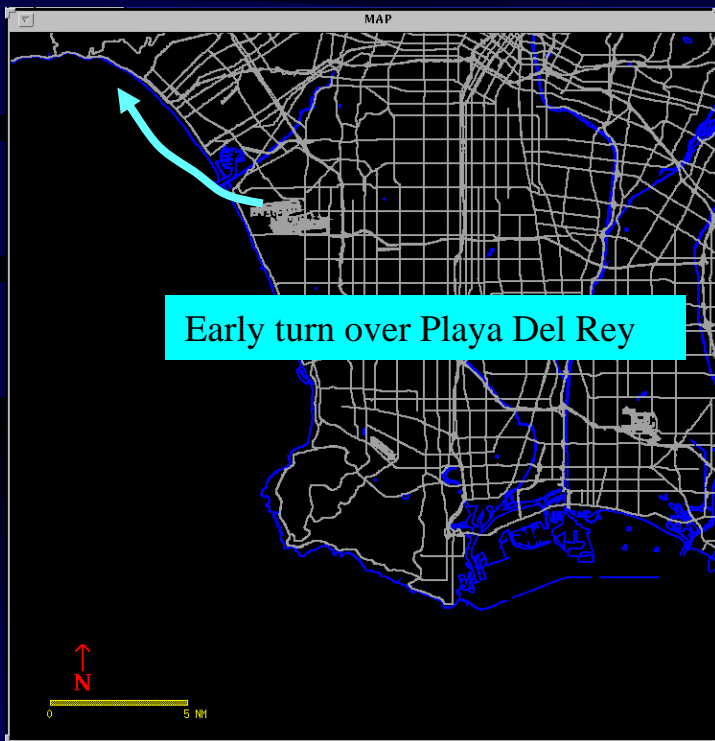


## Data Correction for North Early Turns

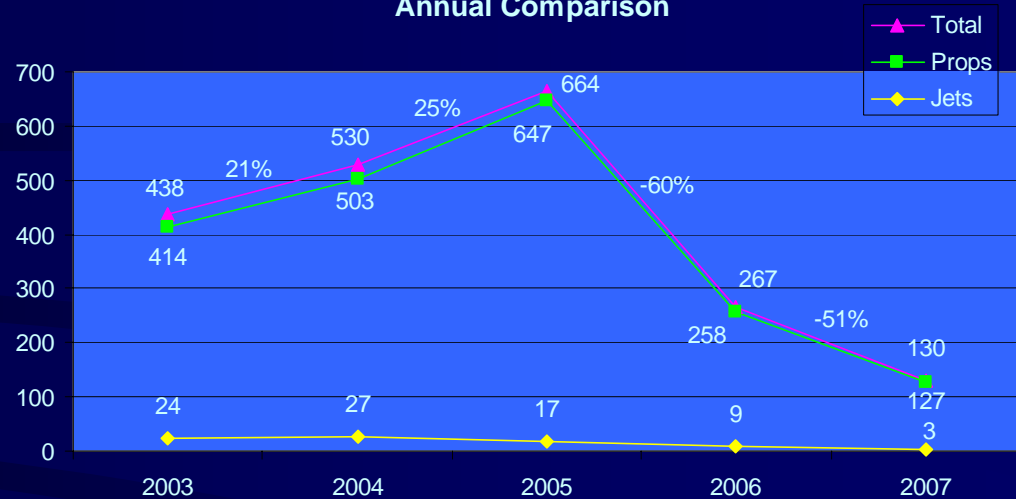
Month	Originally Reported	Revised number
April	0	14
May	6	21
June	1	15
July	5	8
August	0	11
September	1	15

# Early Turn to the North

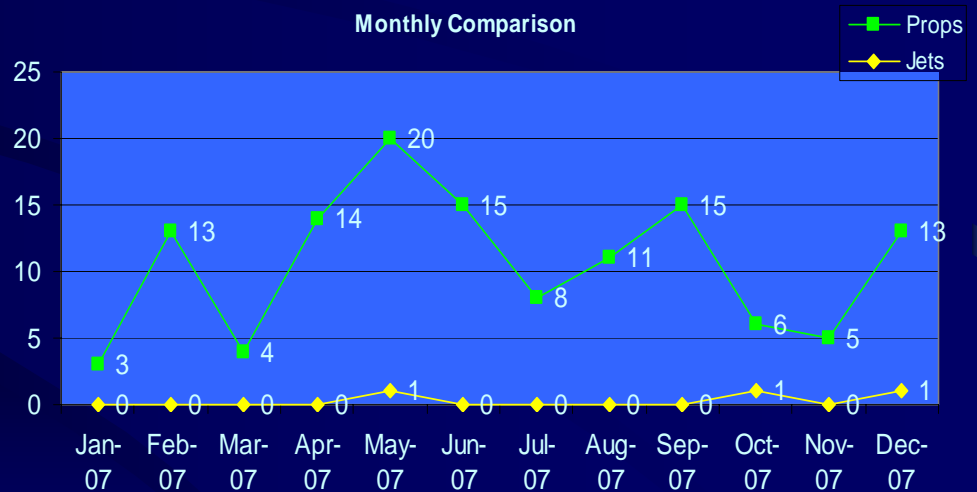
Aircraft departing to west to maintain runway heading past shoreline before turning north



### Annual Comparison



### Monthly Comparison

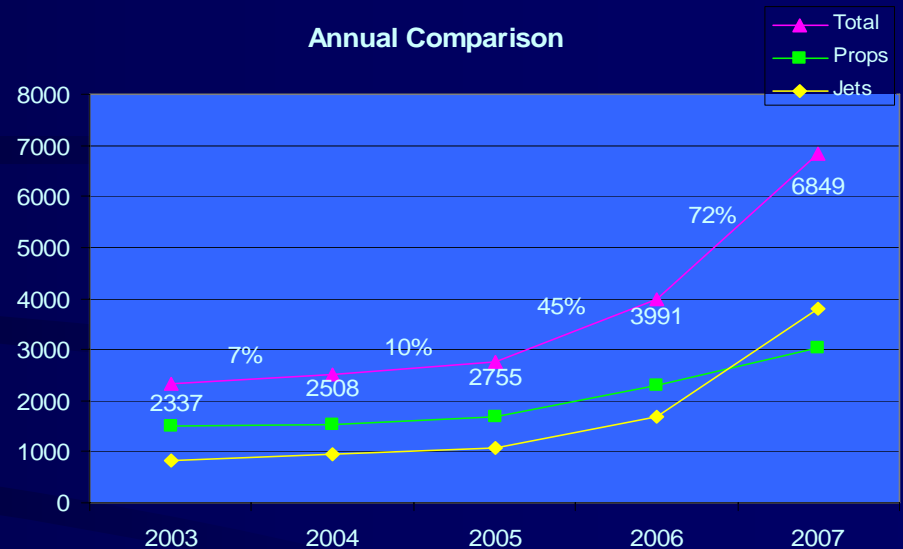


# Early Turn to the South

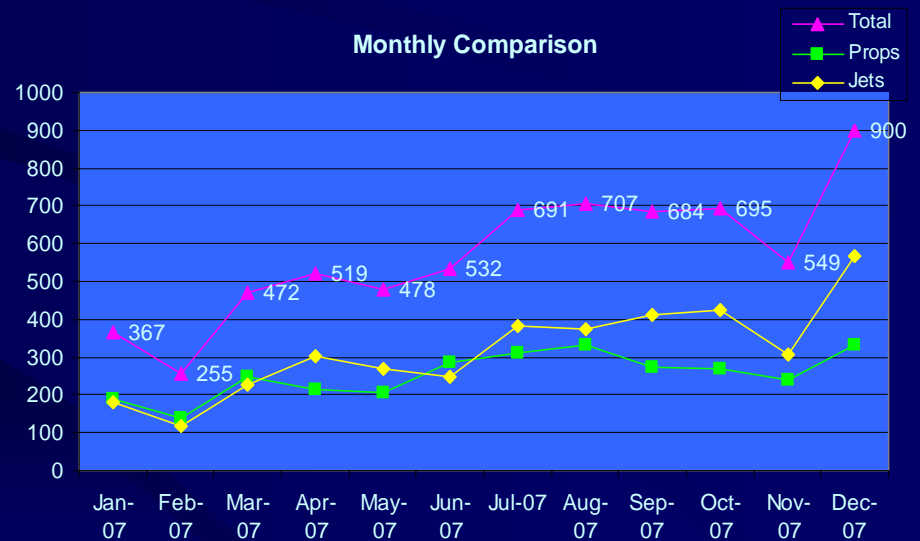
Aircraft departing to west to maintain runway heading past shoreline before turning south



Annual Comparison

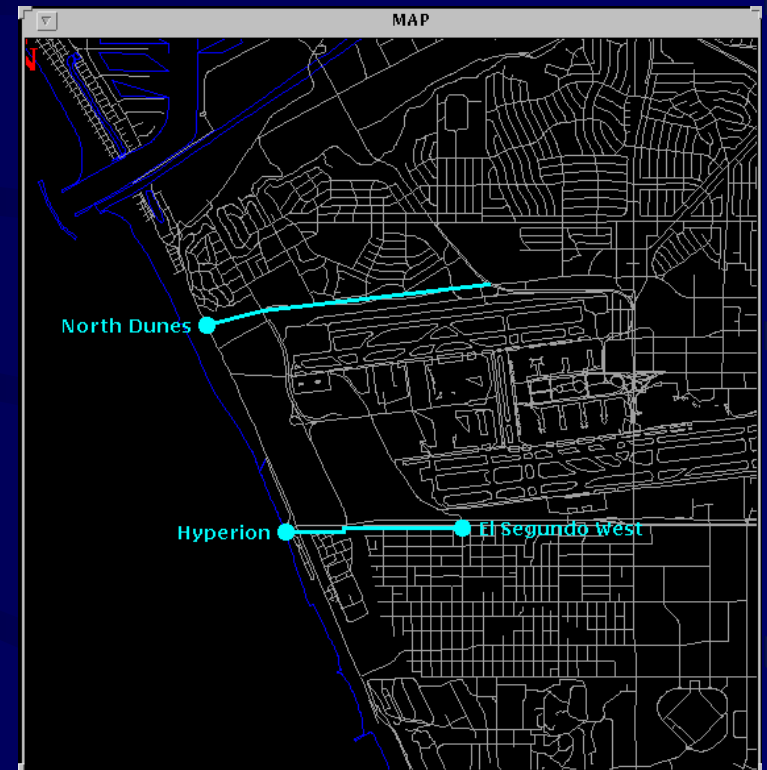


Monthly Comparison



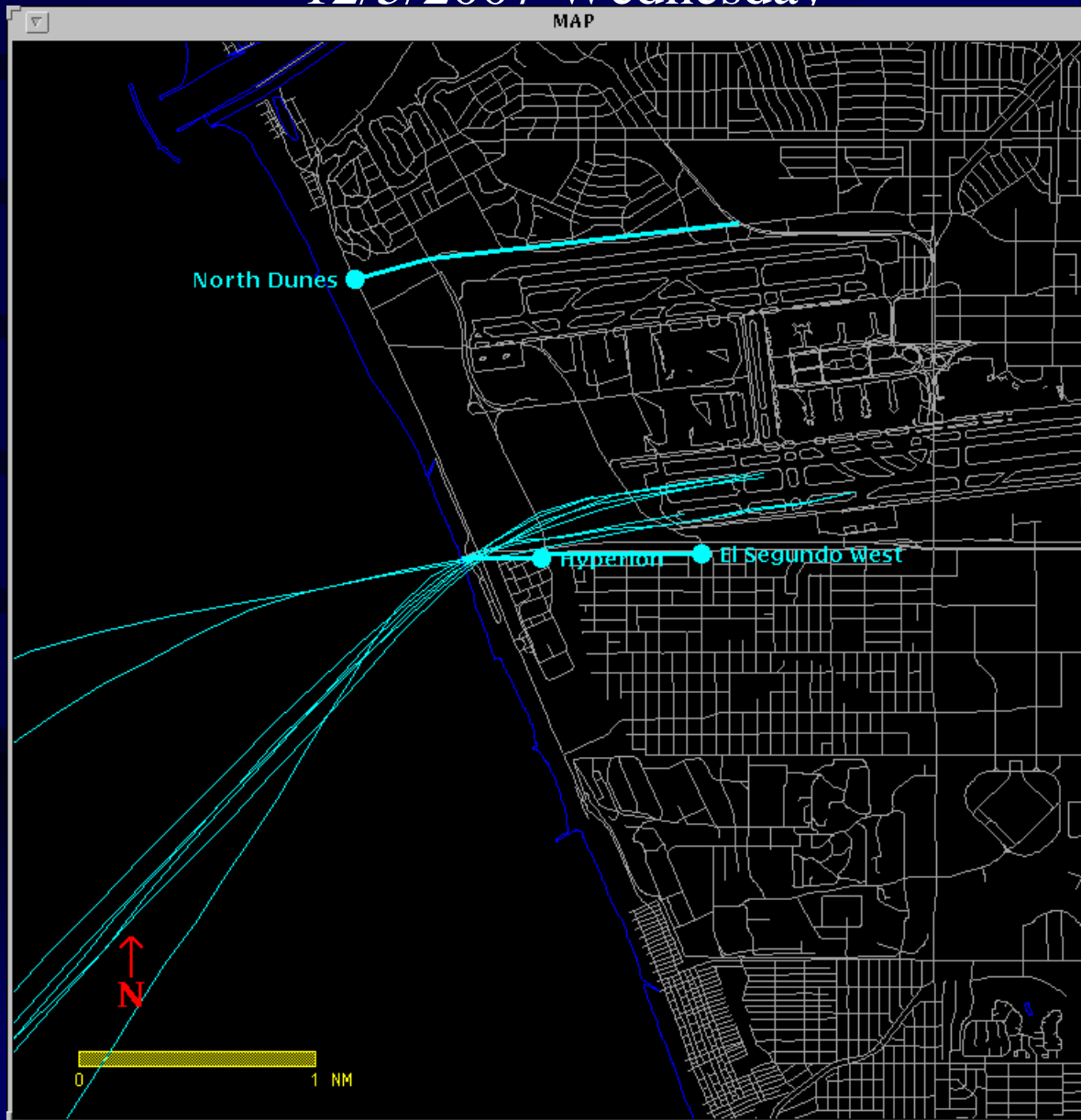
# Monthly Early Turns Comparison November 07 vs. December 07

	Nov 07	Dec 07
Total Early Turns Ops	554	914
Hyperion Gate	415	684
El Segundo Gate	134	216
North Dunes Gate	5	14
South Early Turn Runway Utilization		
Runway 25L	417	643
Runway 25R	132	257



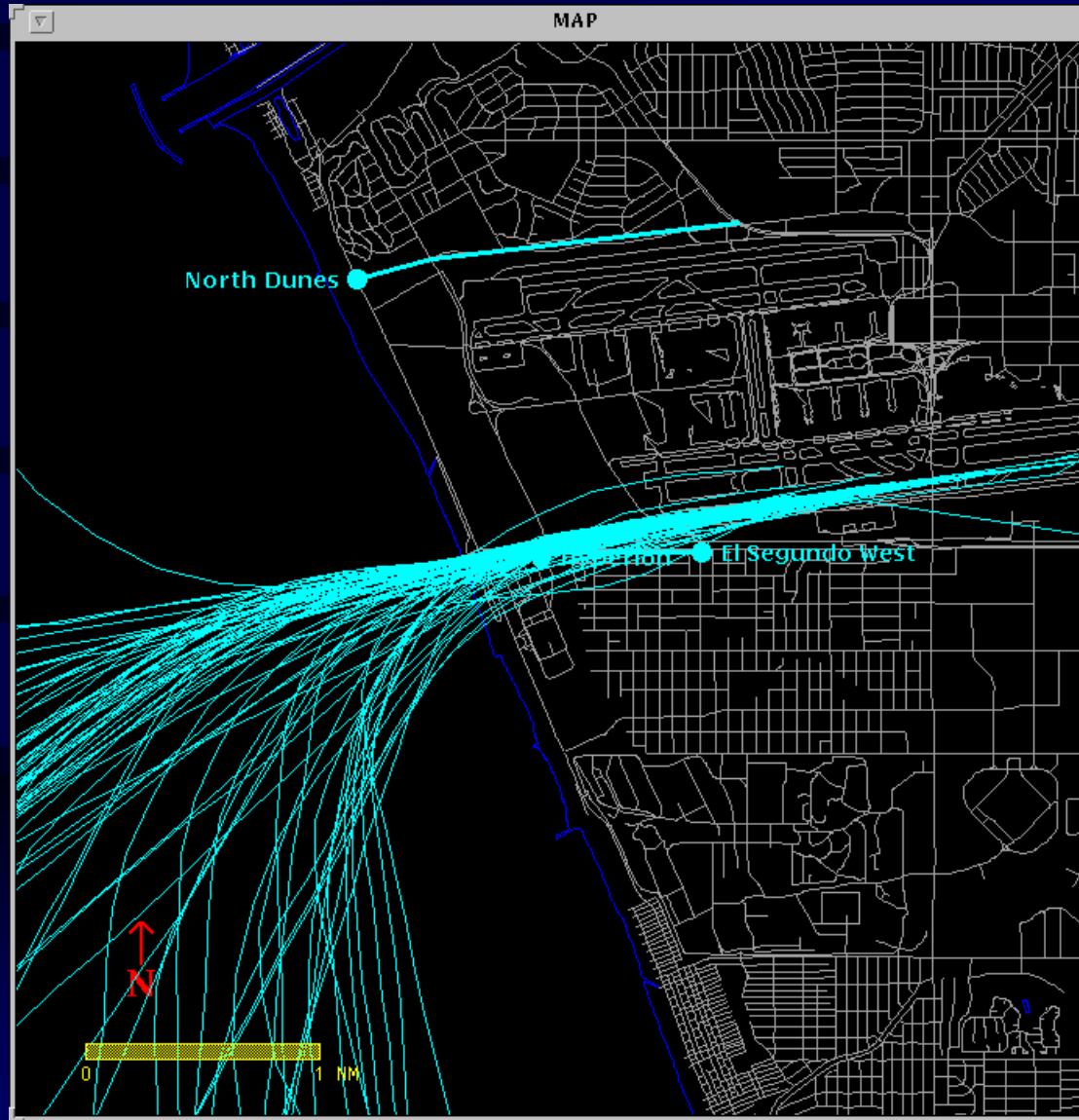
# Sample Early Turns

12/5/2007 Wednesday





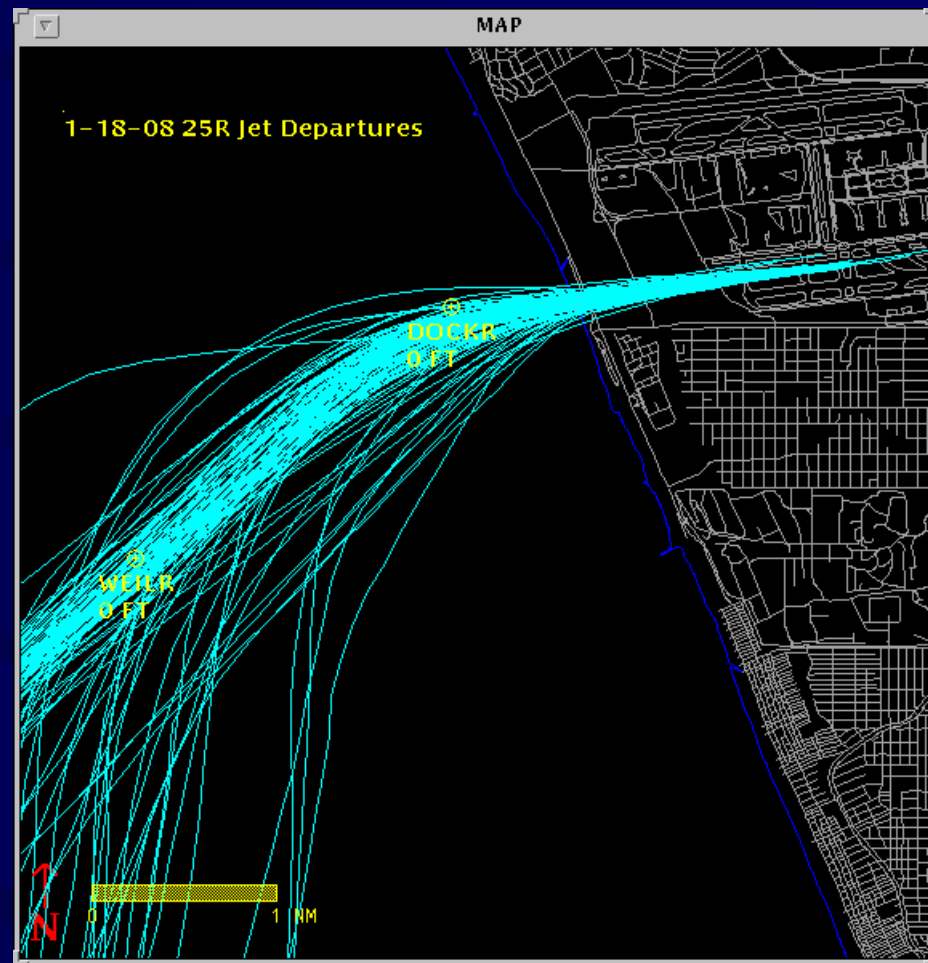
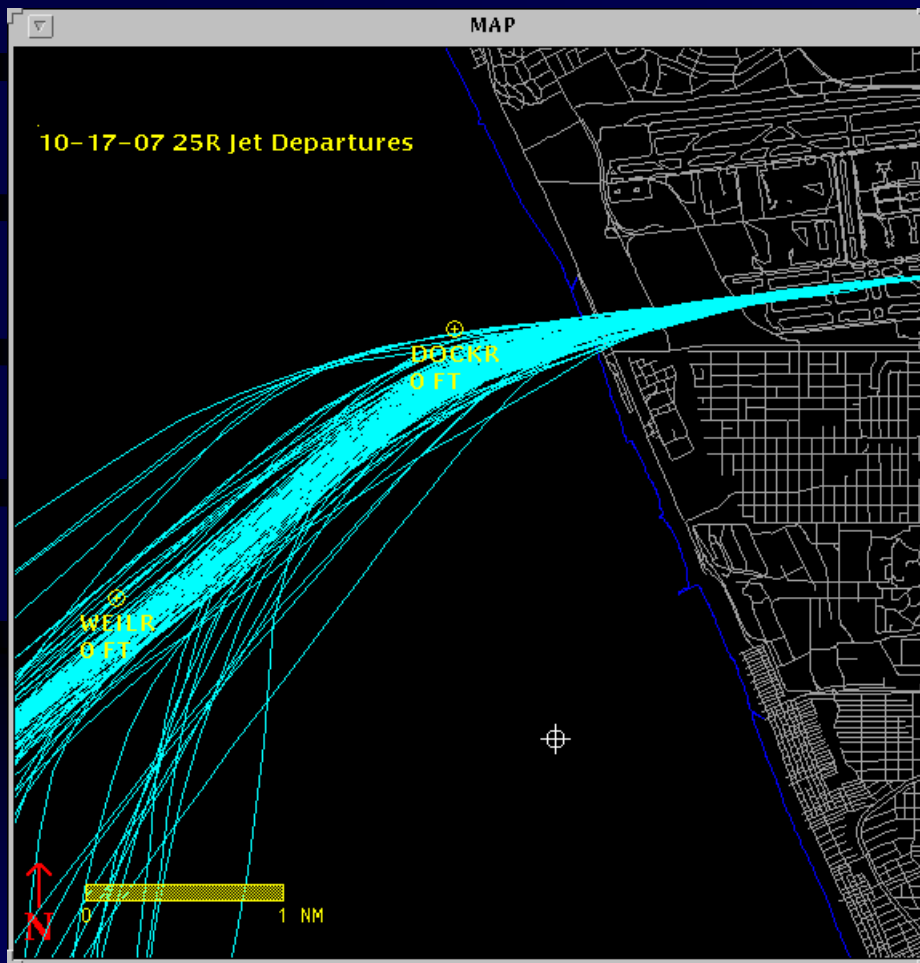
# Sample Early Turns 12/1/2007 Saturday



# RNAV Departure Comparison

Before

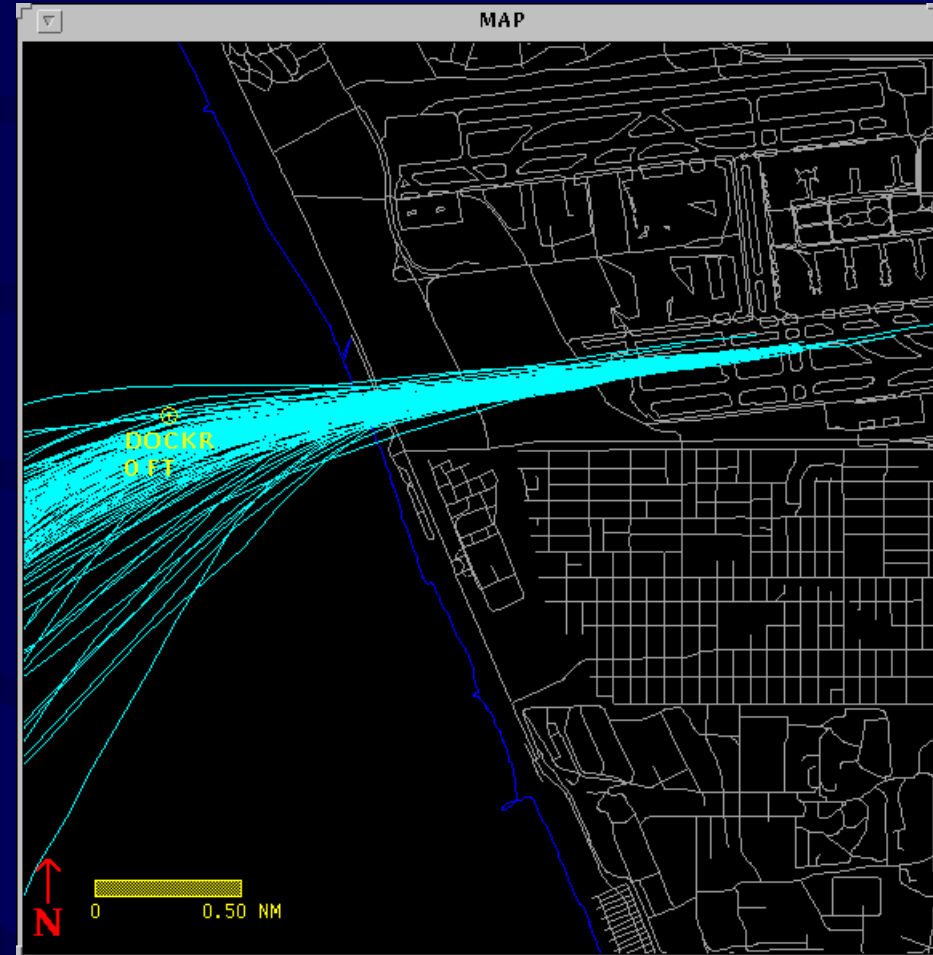
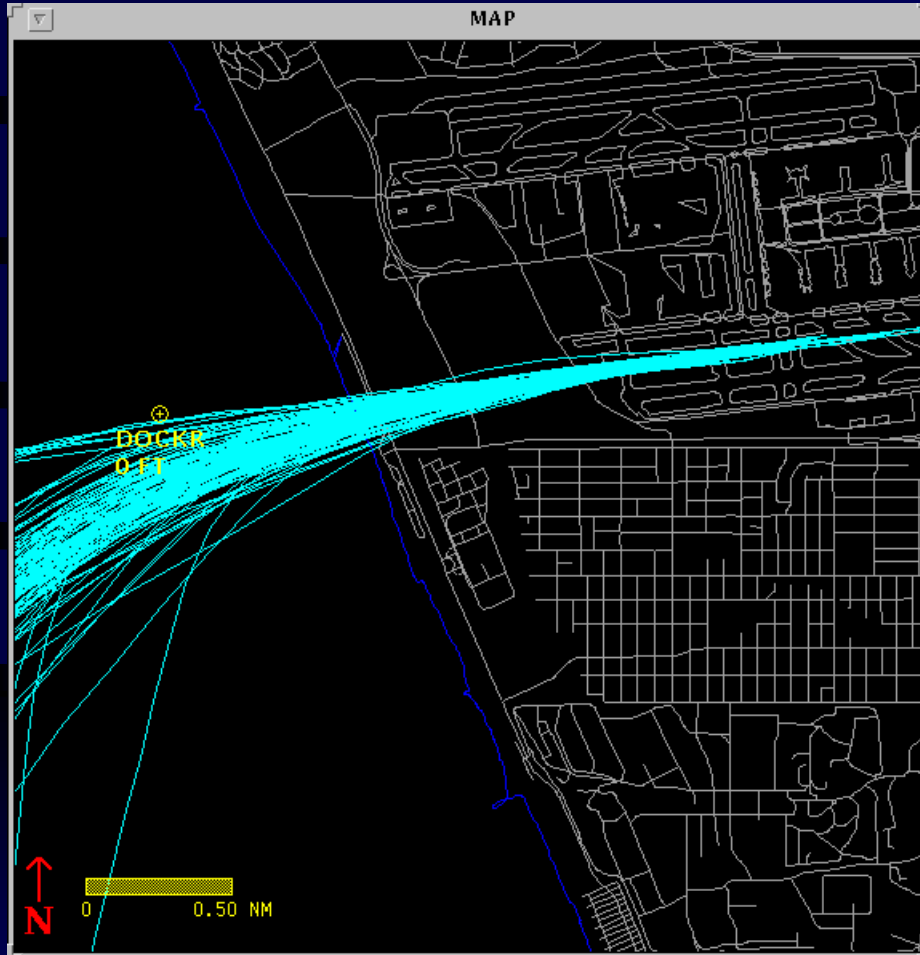
After



# RNAV Departure Comparison Close-In View

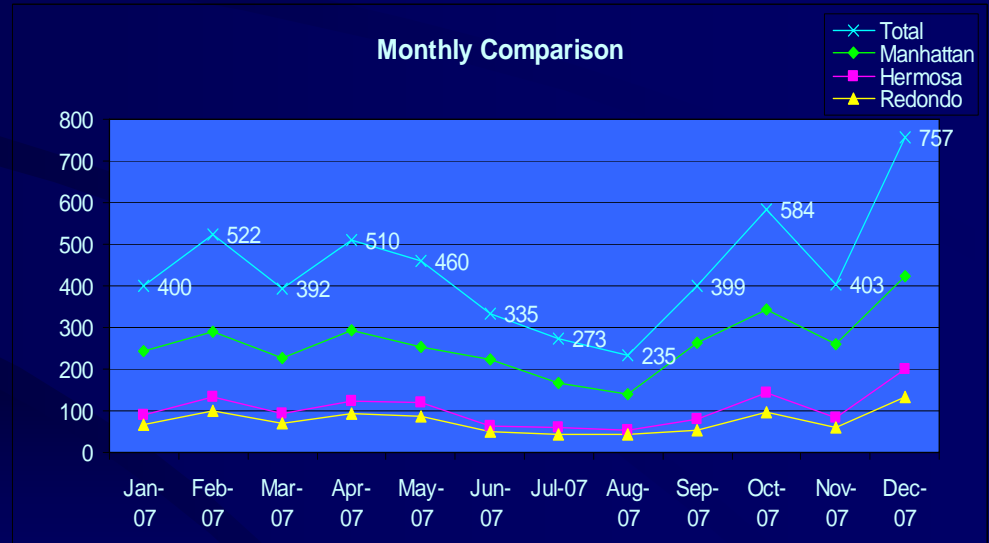
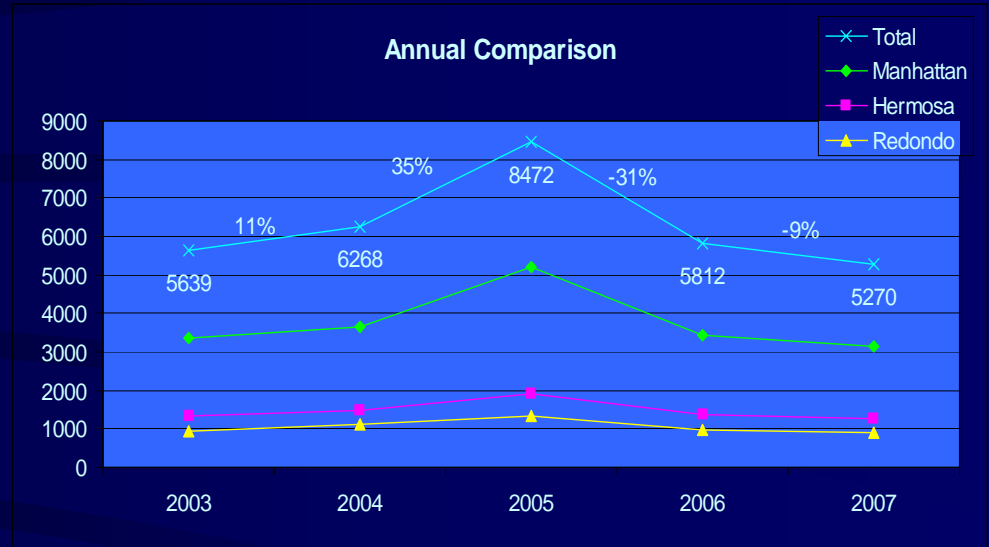
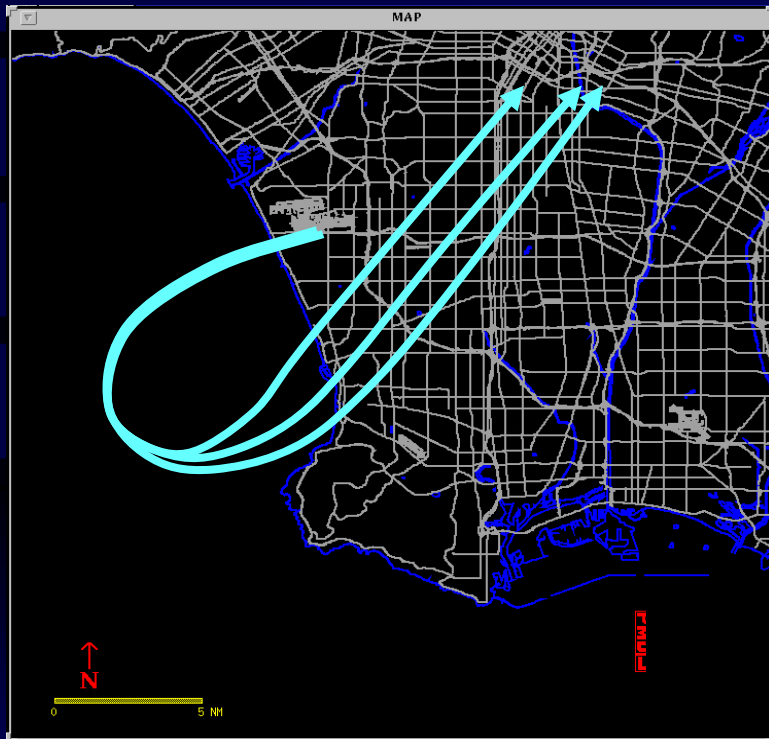
Before

After



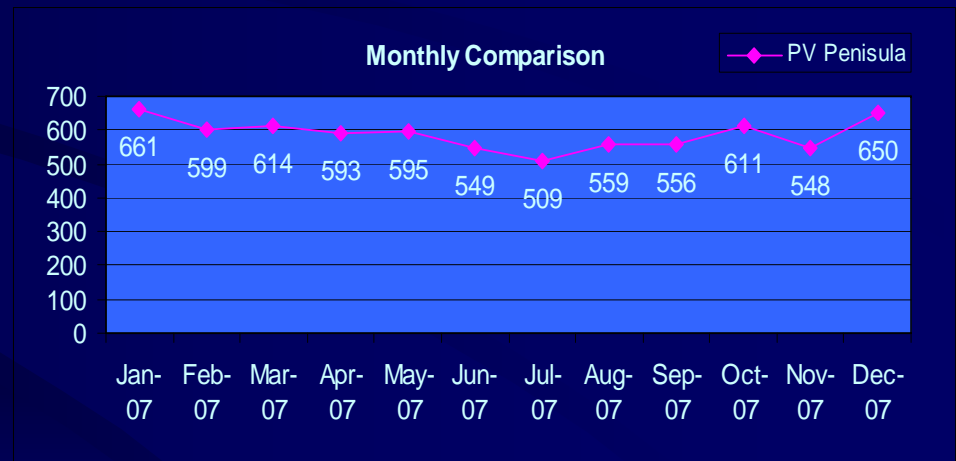
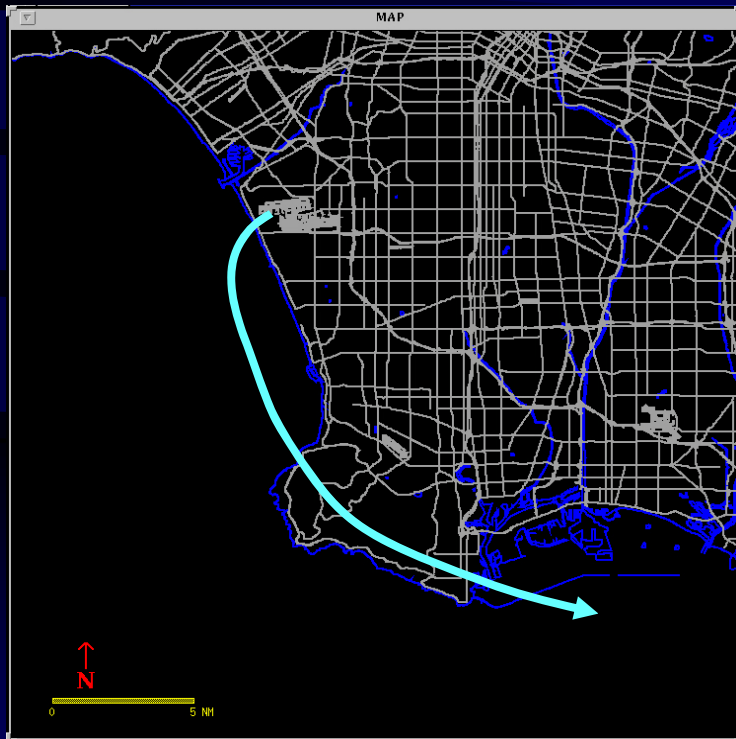
# Missed LAX Loop Departure – By Community

Monitoring loop departures overflying communities



# Palos Verdes Peninsula – Turboprop Overflights

Monitoring southbound turboprops departing LAX that overfly Peninsula



# Turboprop Departures with Future JEDDD RNAV Waypoints Shown

