



Statistical Update on LAX Aircraft Operations

July 11, 2012

LAX/Community Noise Roundtable



Overview

Statistical information on the following operations:

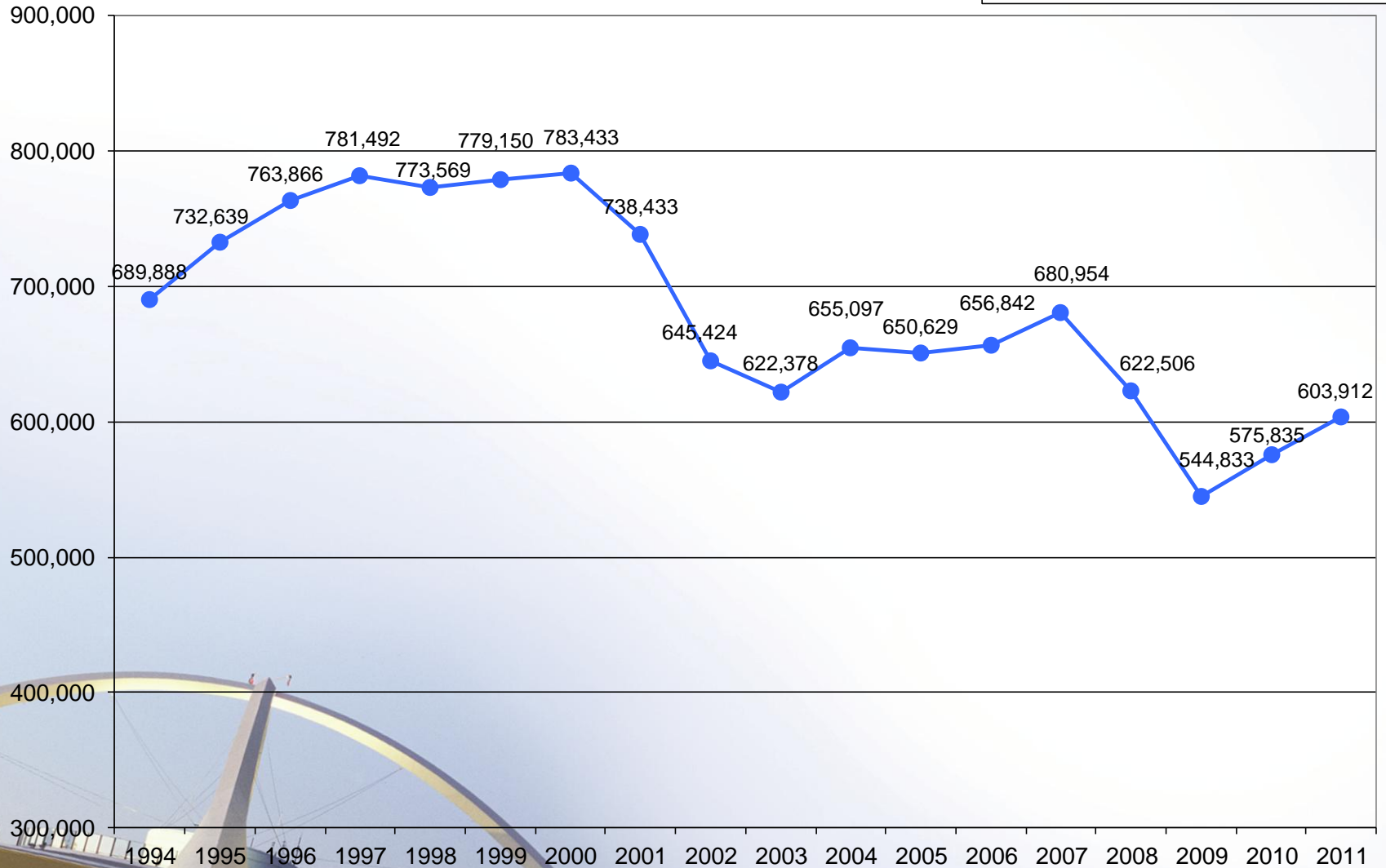
- East Departures
- Early Turns
- Go-arounds



Total Operations Comparison

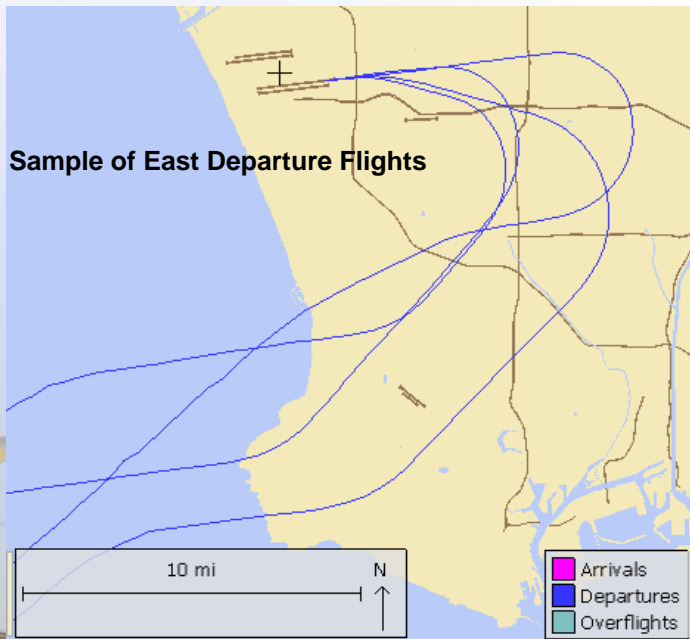
Total LAX Operations

—●— Total Ops (Arrivals & Departures)

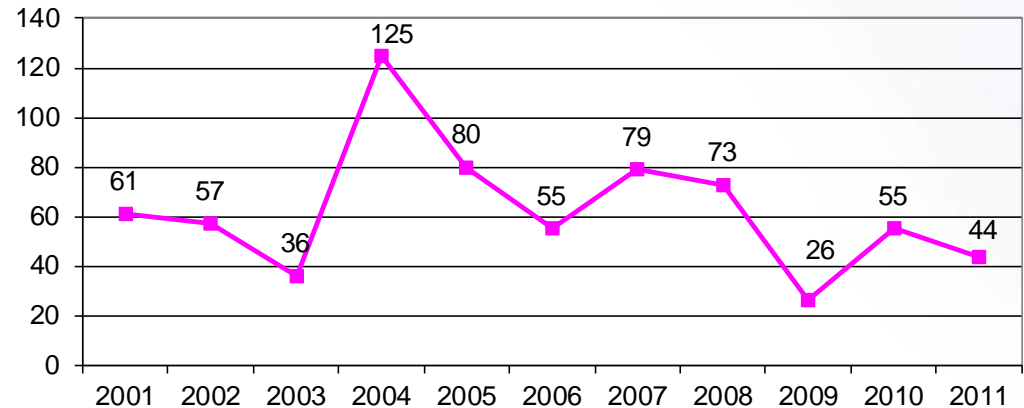


Non-Conforming East Departures Midnight to 6:30 AM

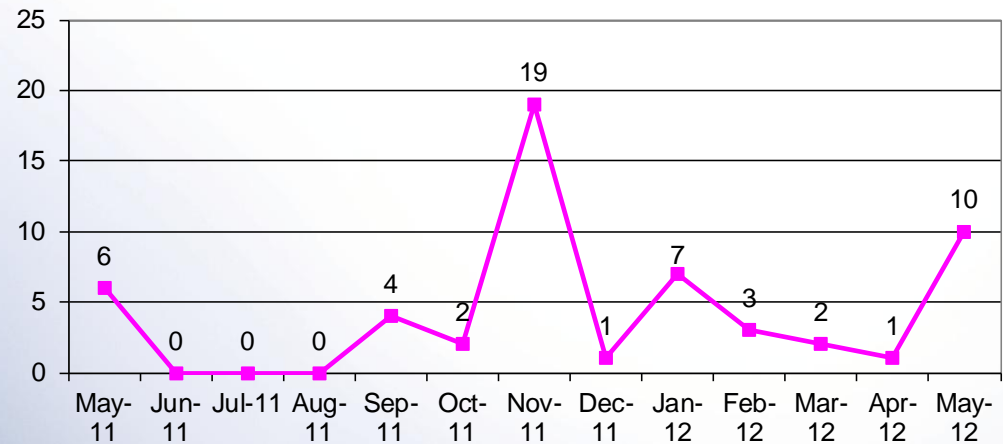
This report shows a summary of aircraft operations that departed to the east while the airport is still conducting westerly departures between midnight and 6:30 a.m. These individual easterly departures usually occur when the pilot of a heavy aircraft (e.g. B747s) determines that the tail wind is too great for the weight of the aircraft and requests to depart east into the wind for aircraft safety.



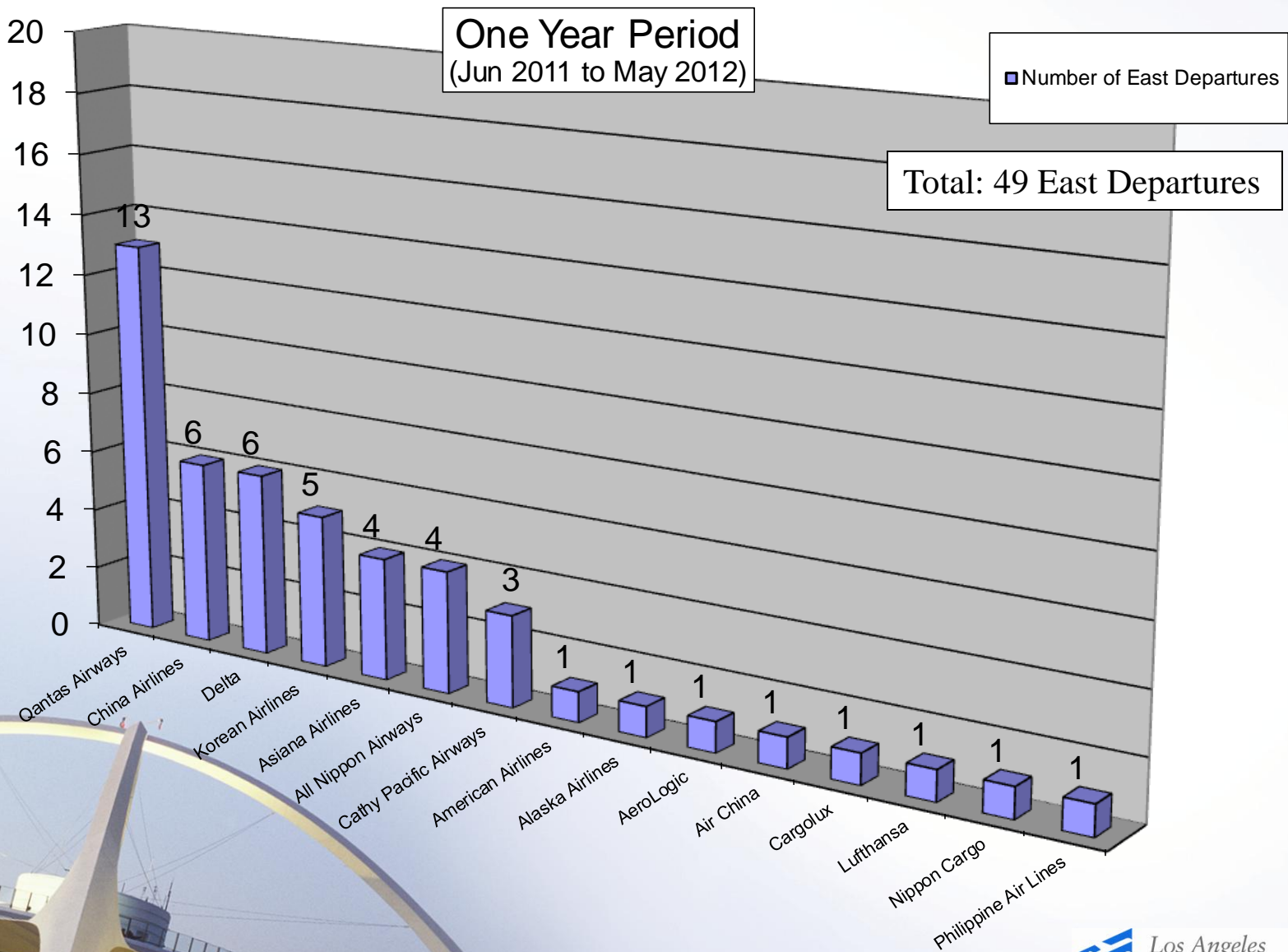
Annual Comparison



Monthly Comparison

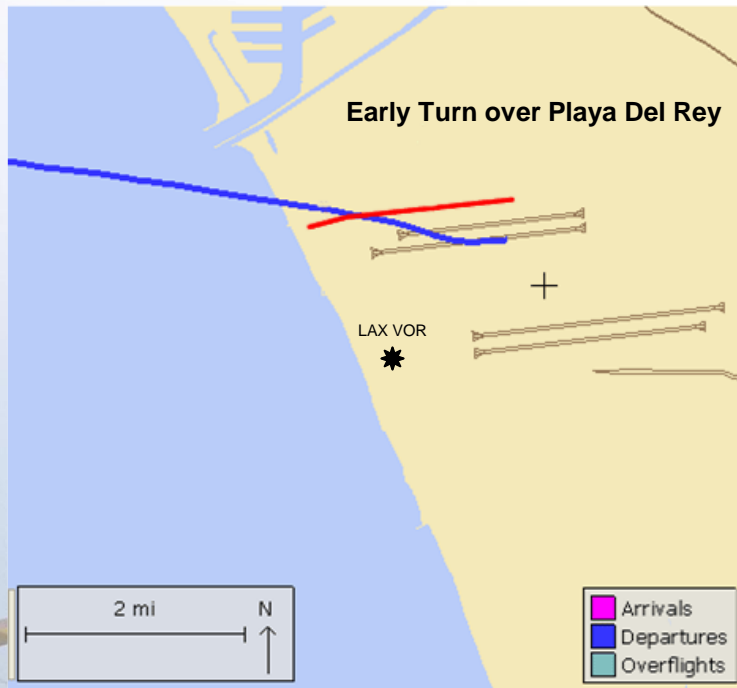


Non-Conforming East Departures by Operators Midnight to 6:30 AM

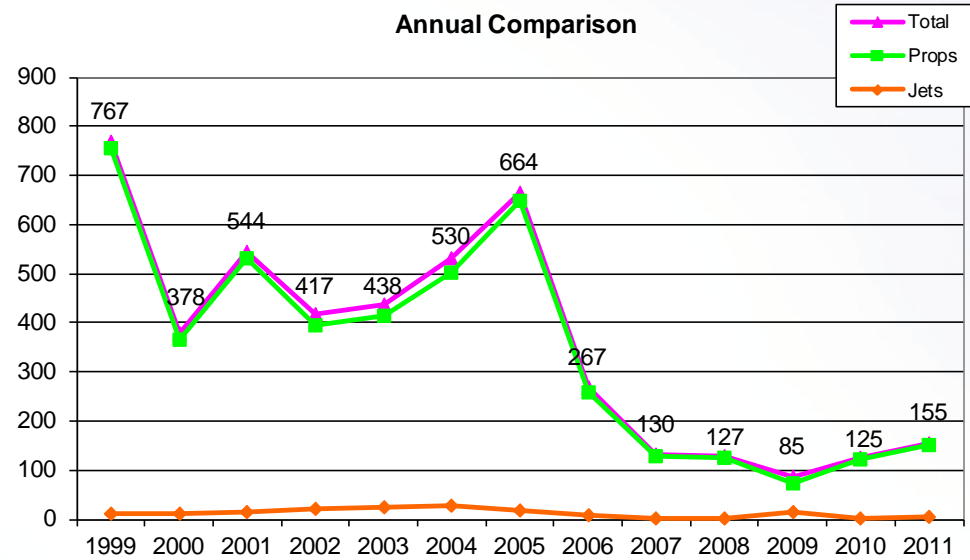


Early Turn to the North

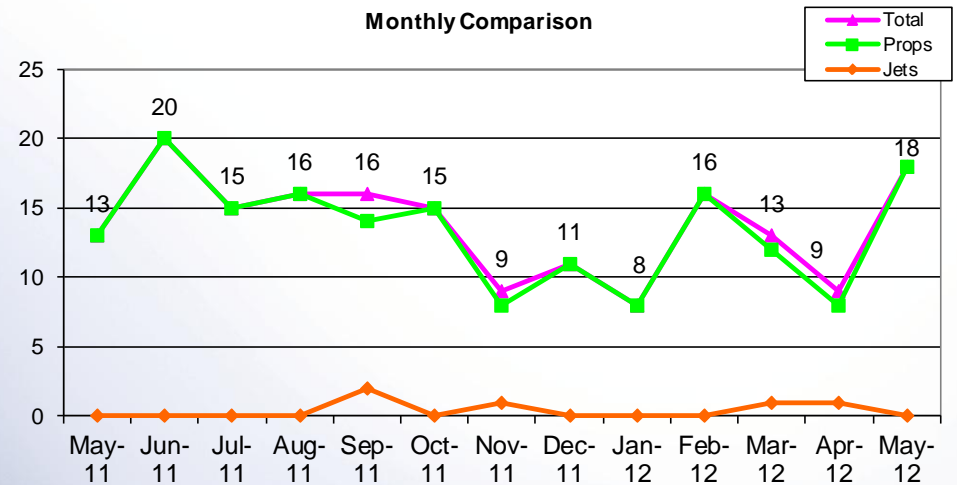
Aircraft departing to the ocean turn early prior to reaching the shoreline



Annual Comparison

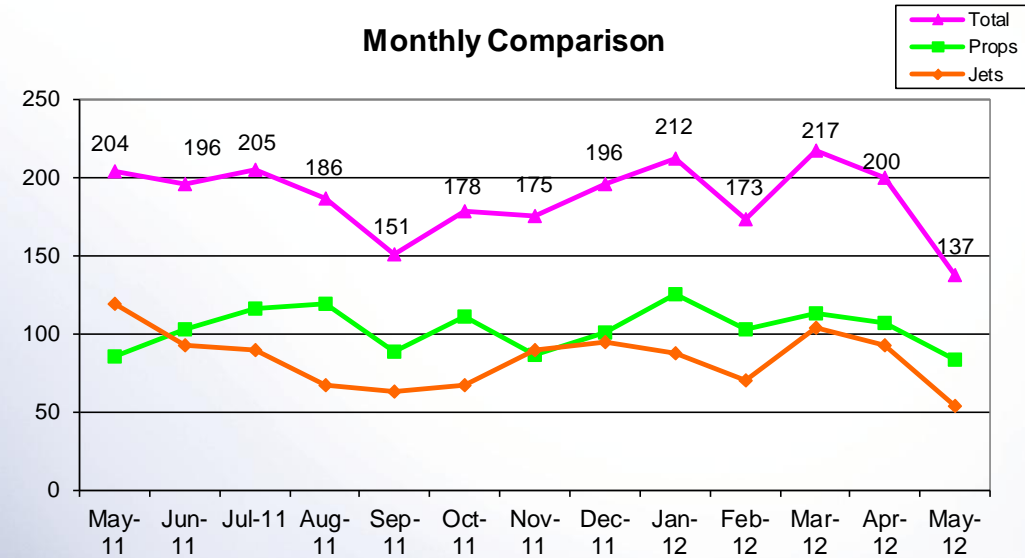
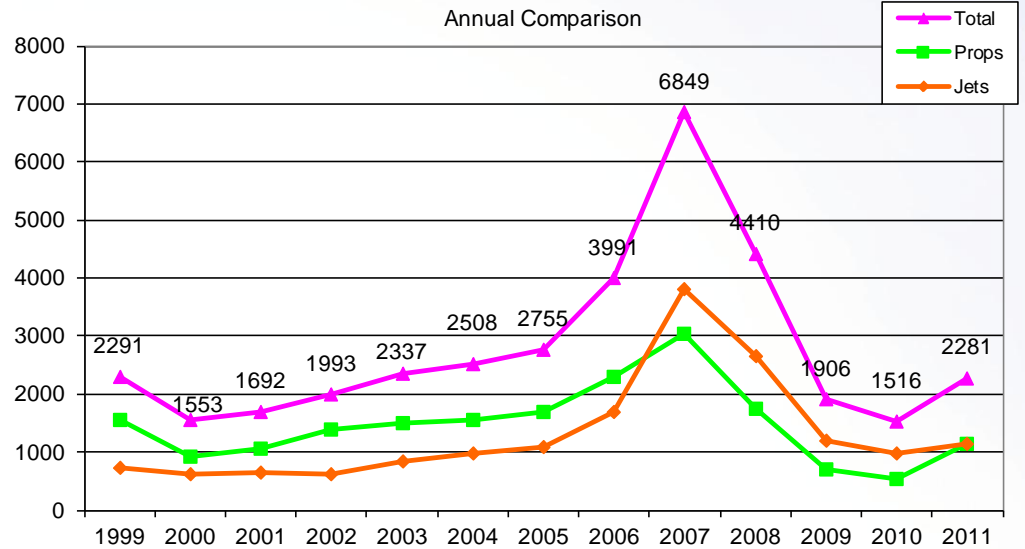
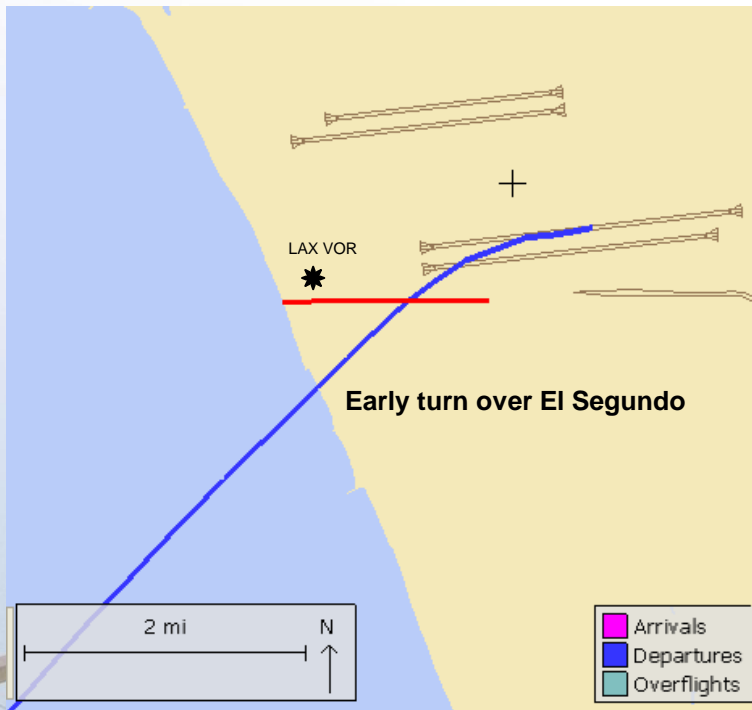


Monthly Comparison

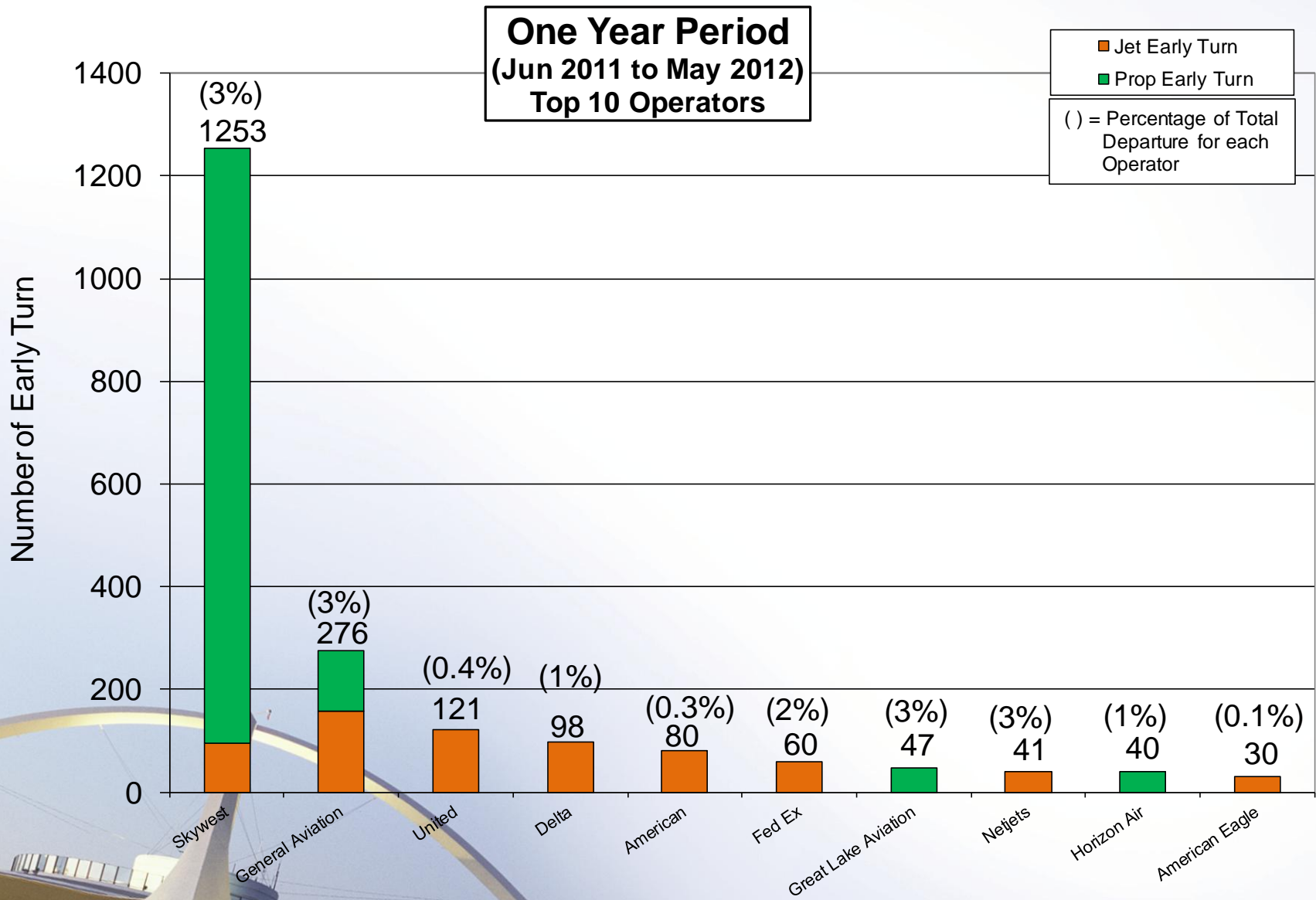


Early Turn to the South

Aircraft departing to the ocean turn early prior to reaching the shoreline



Early Turns by Operators



Early Turns Breakdown

May 2012



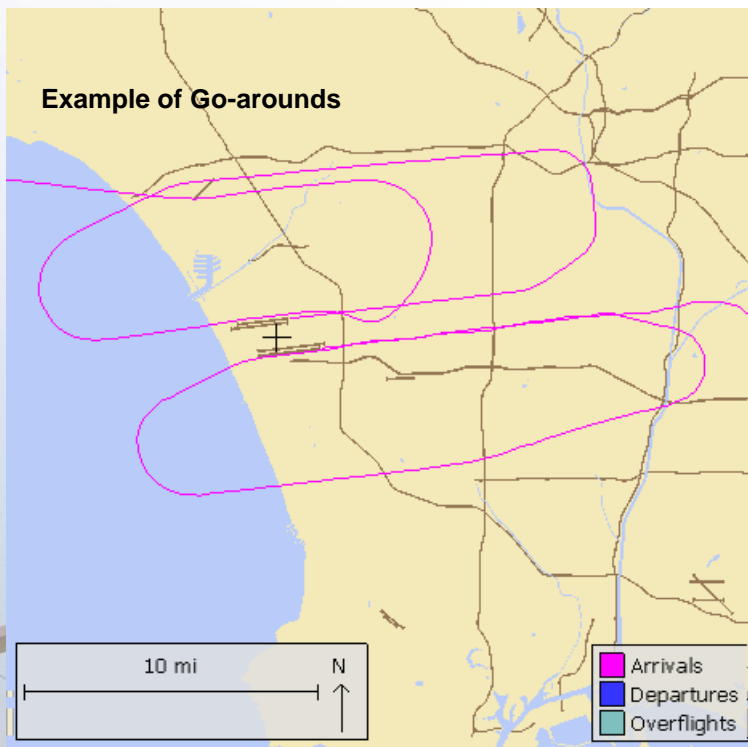
Total Early Turn Ops	155
Hyperion Gate	110
El Segundo Gate	27
Playa Del Rey Gate	18

Result of Investigation	
Only El Segundo and Playa Del Rey Gates	
Total	45
FAA instructed	27
Pilot initiated	18
Wind drift	0

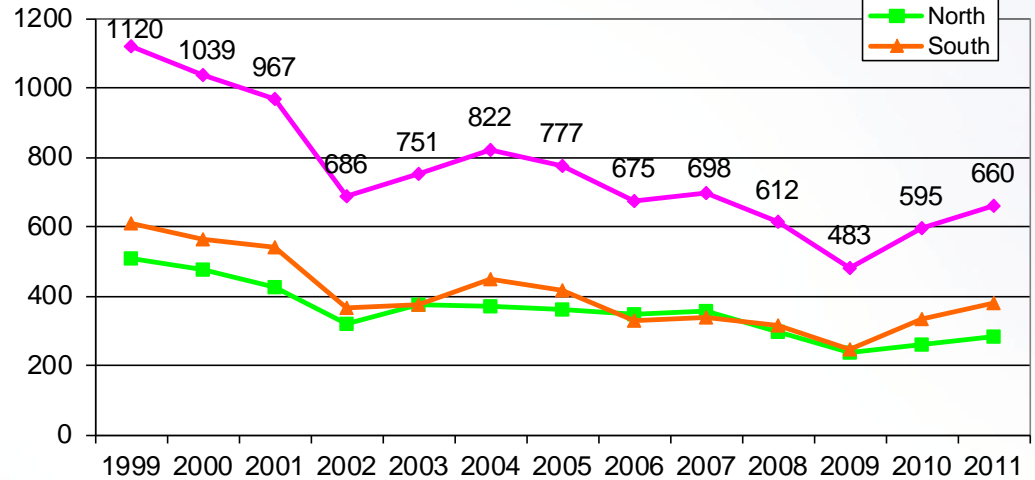


Go-Arounds

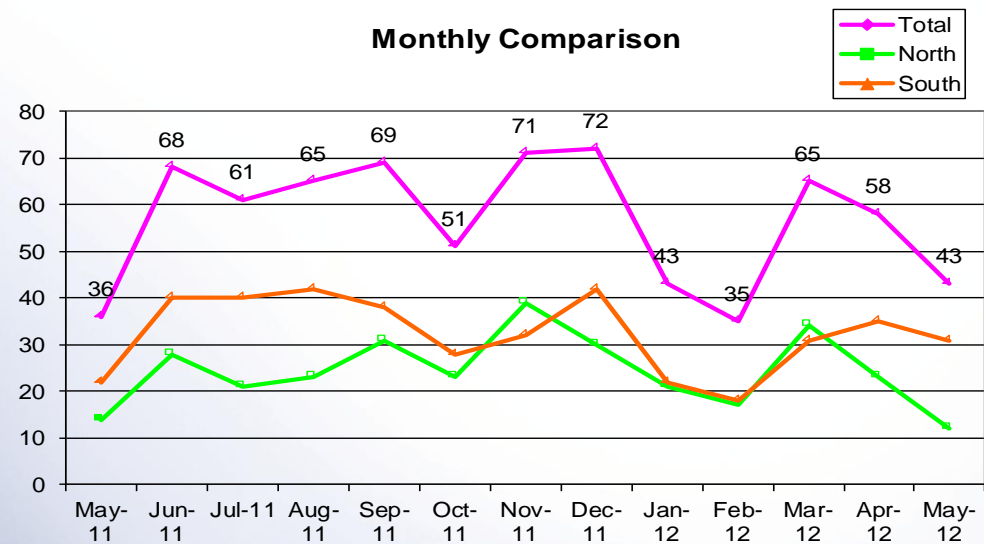
Monitoring pilot or ATC initiated go-arounds or missed approaches



Annual Comparison



Monthly Comparison



Reasons for Go-Arounds – May 2012

Pilot Initiated		22
	Too high or too fast	16
	Aircraft Equipment (flaps, gears, avionics)	4
	Ground Equipment (Nav aids, lighting, etc)	2
Controller Initiated		17
	In-trail Spacing	9
	Previous Arrival Traffic on Runway	4
	Runway Crossing Traffic	4
Unknown		4
Total		43



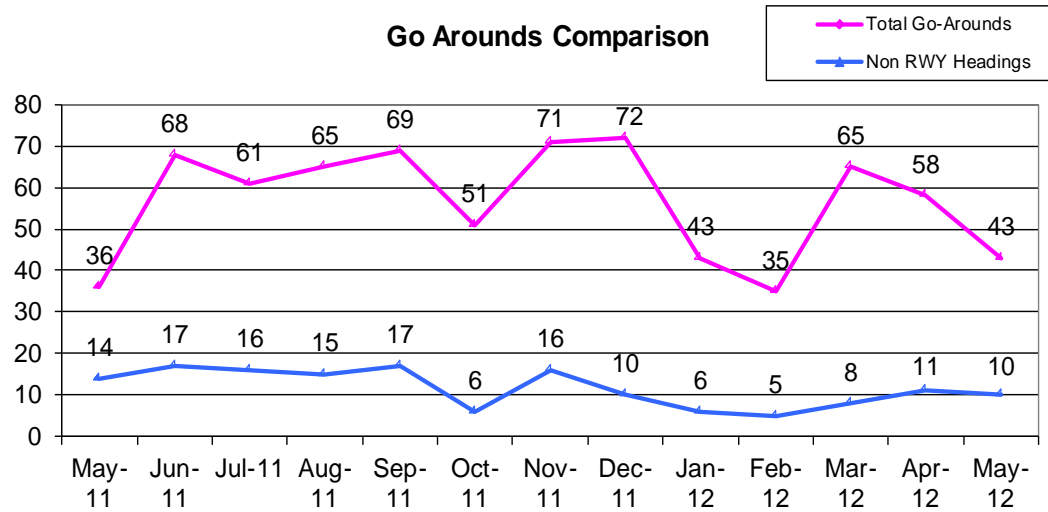
Go-Arounds – Not Maintaining RWY Headings

© 2010 TeleAtlas, Rel. Jun 2010

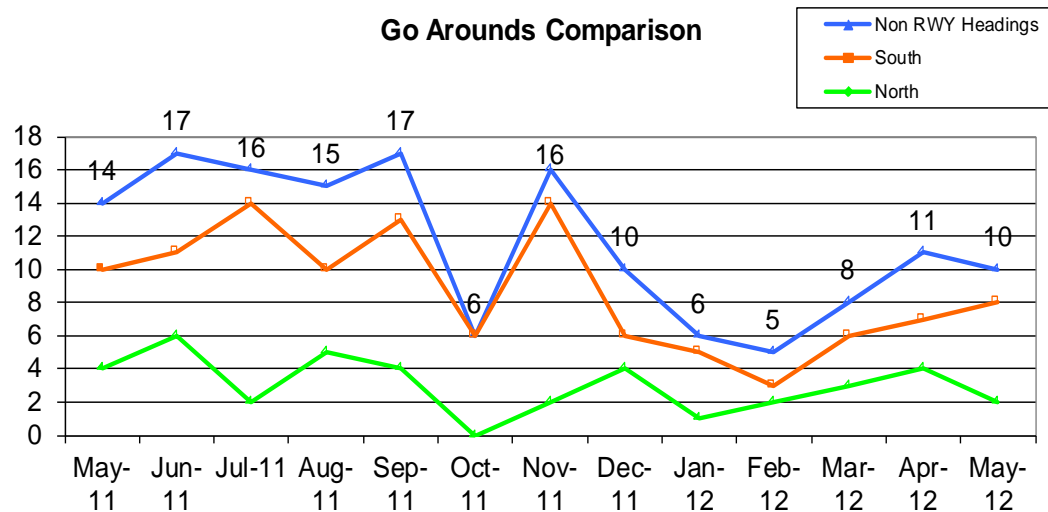
Example of Go-around not maintaining runway heading



Go Arounds Comparison



Go Arounds Comparison



Go-Arounds – By Operators

