



# Statistical Update on Aircraft Operations

November 14, 2012

LAX/Community Noise Roundtable



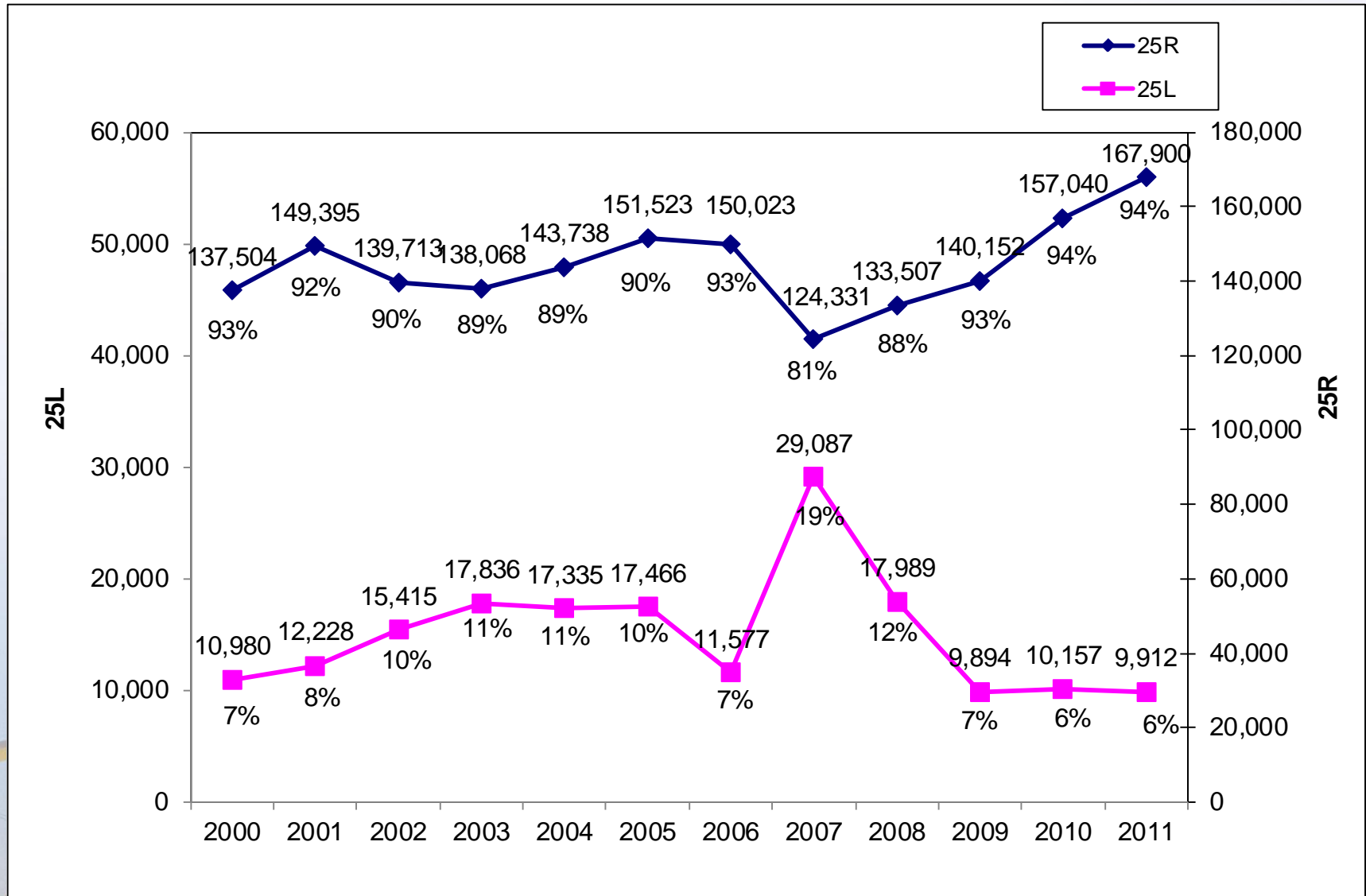
# Overview

Statistical information on the following operations:

- 25L Departures
- Palos Verdes Overflights

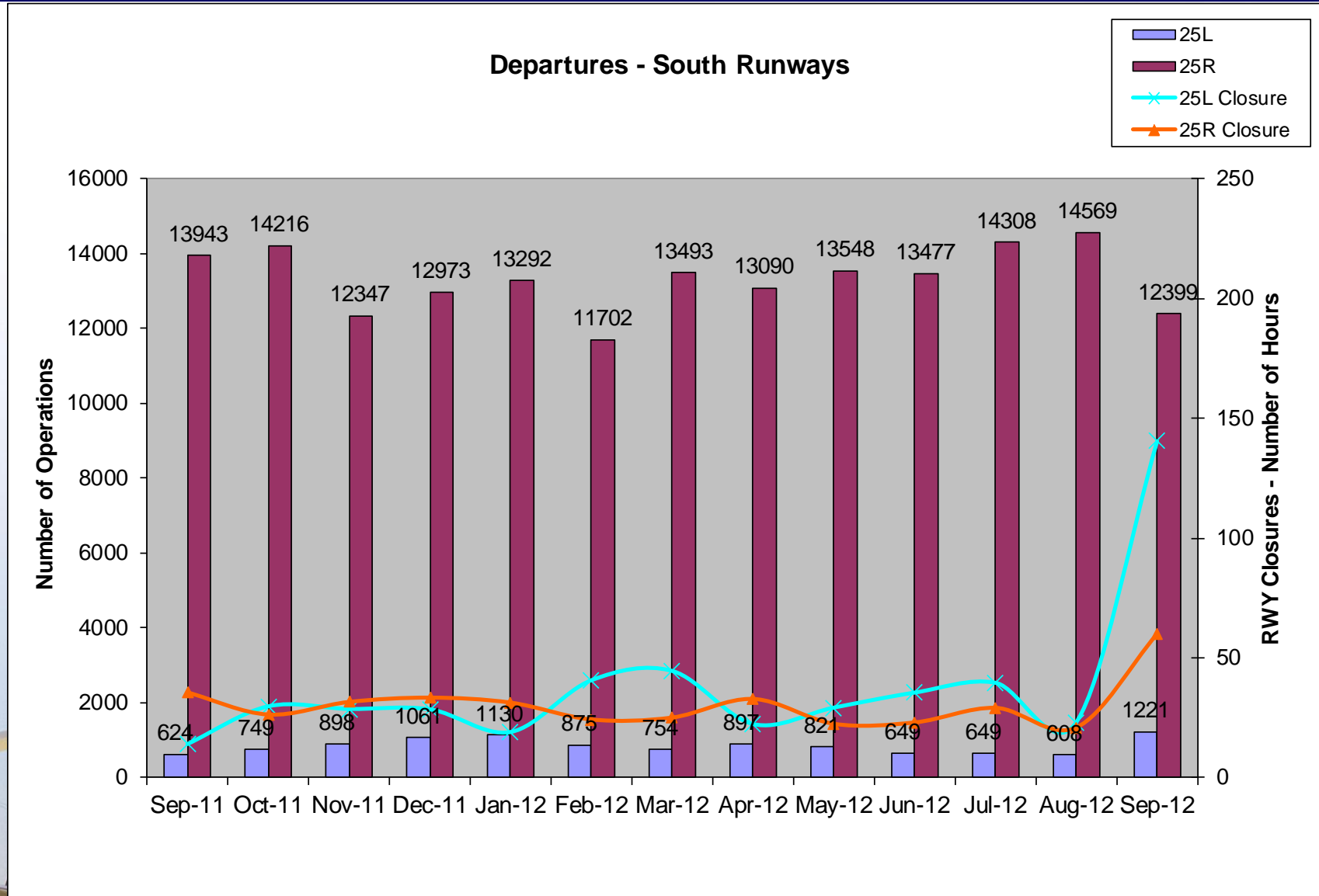


# Departures – Runways 25L and 25R Annual Comparison

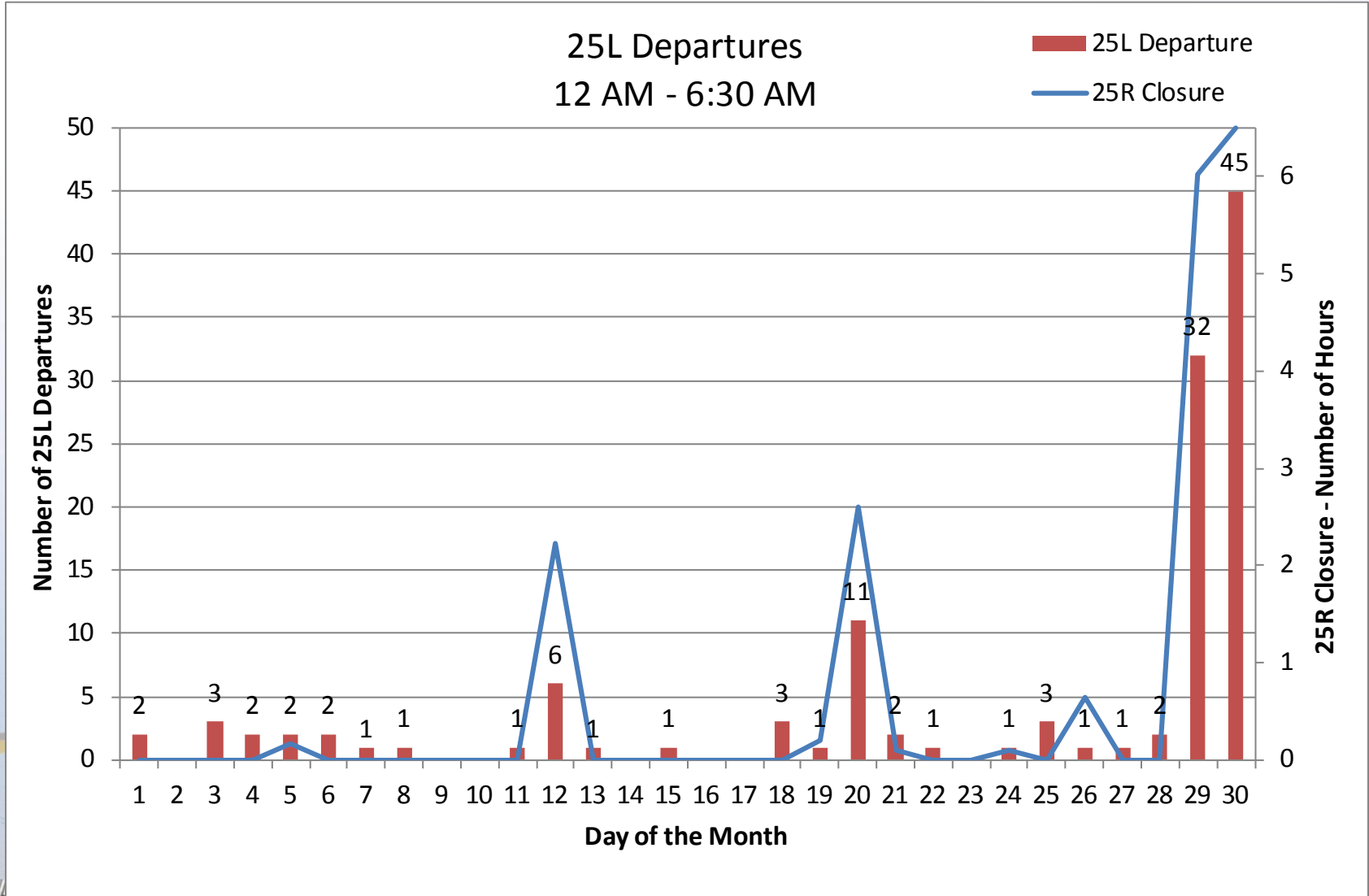


# Departures – Runways 25L and 25R

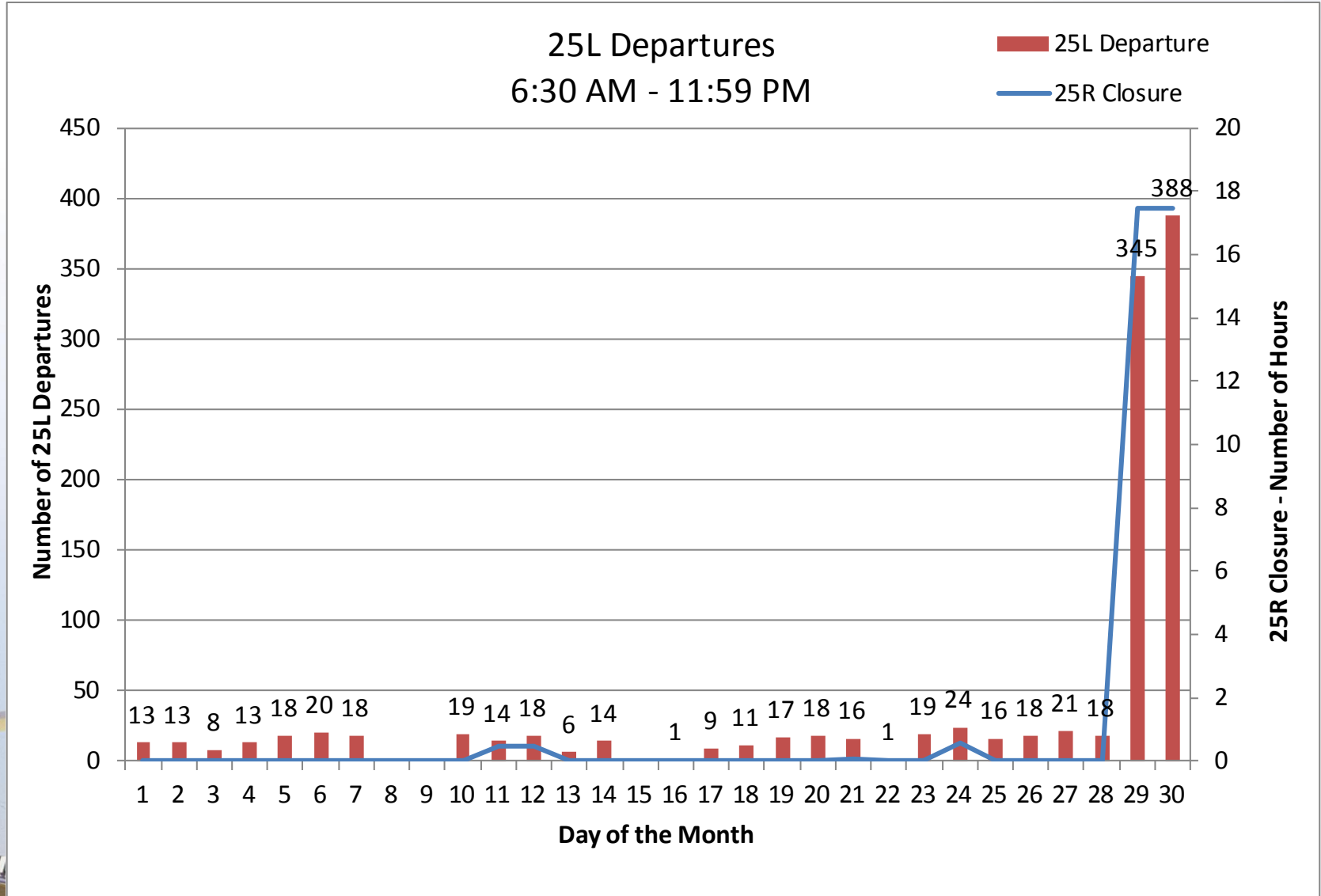
## 13-month period



# 25L Departures September 2012

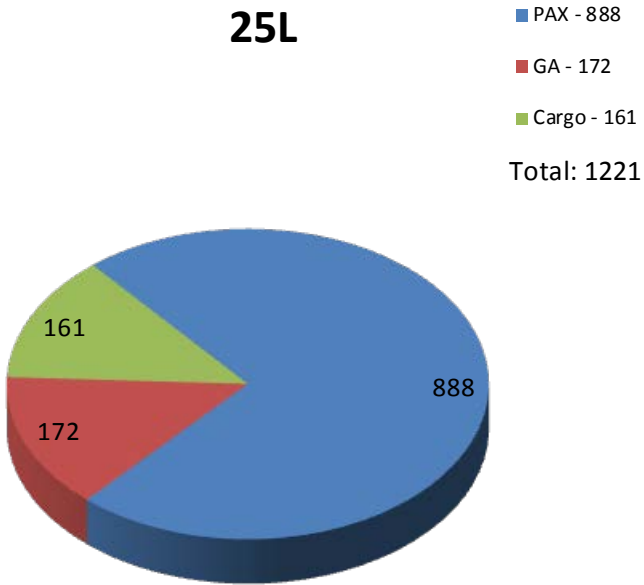


# 25L Departures September 2012

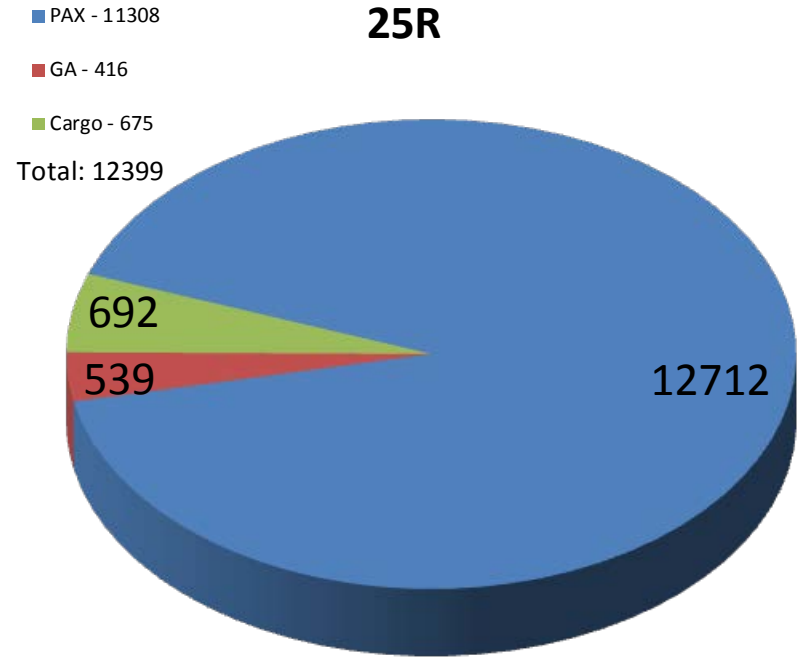


# Departure by Operator Type September 2012

**25L**

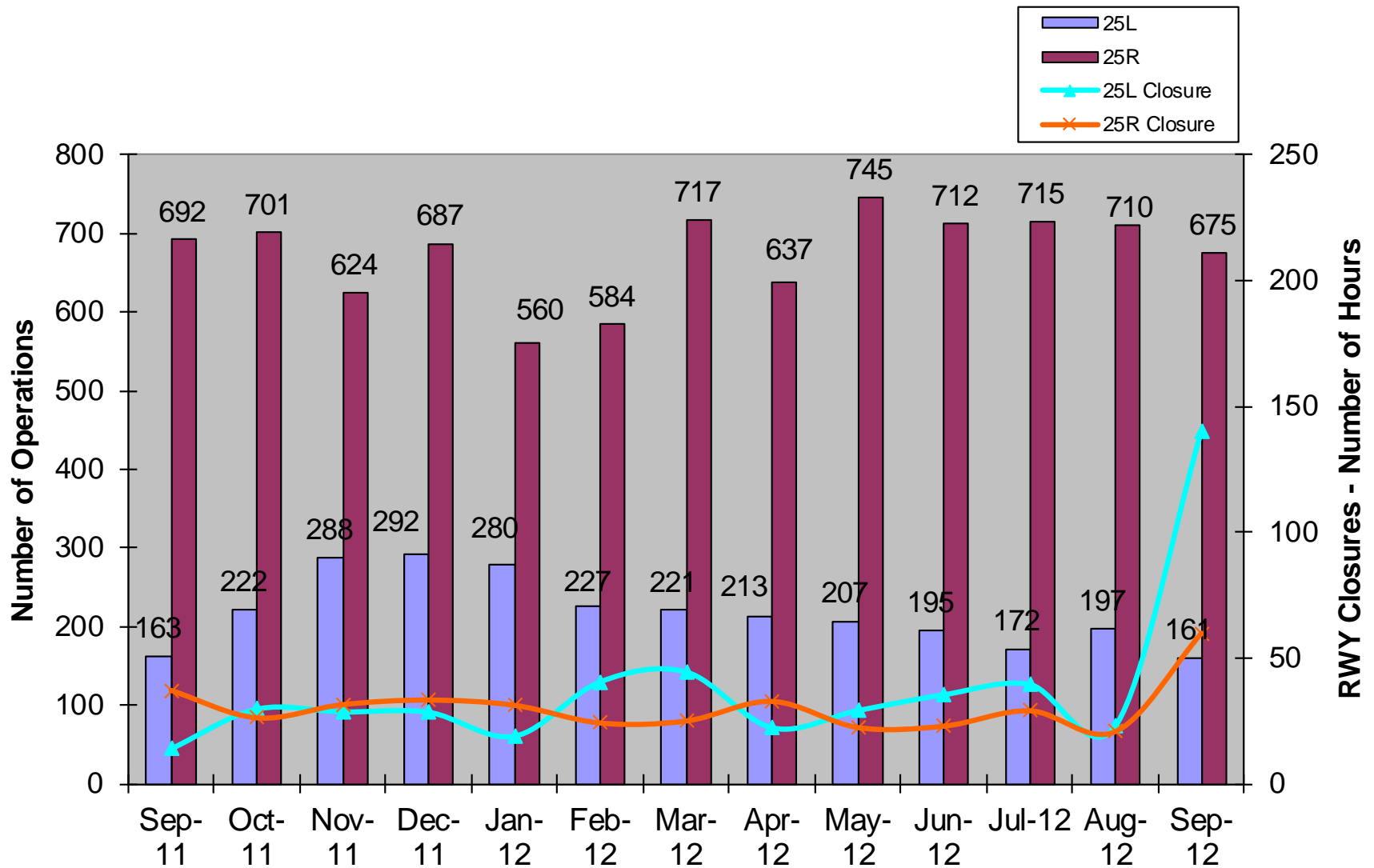


**25R**



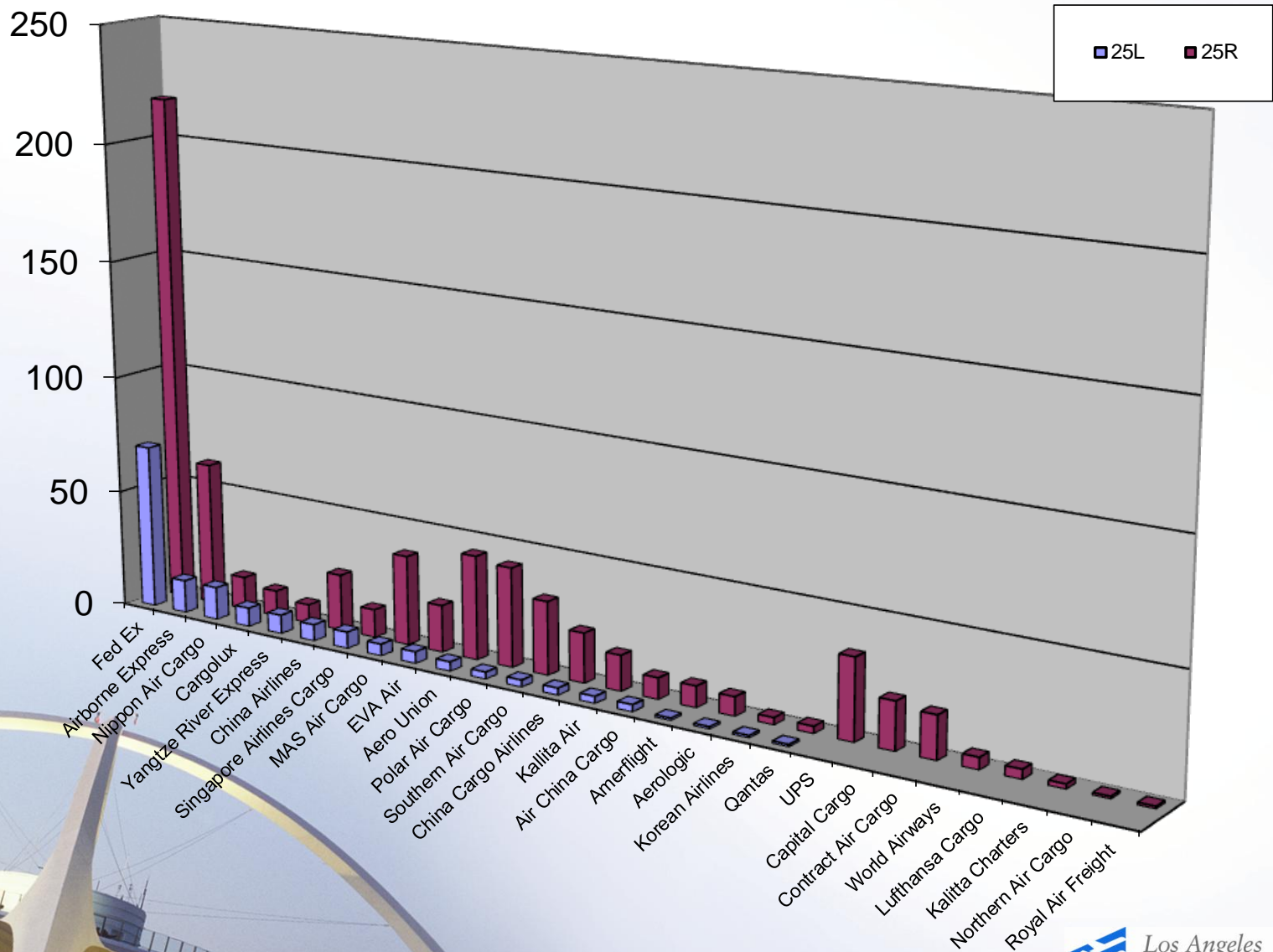
# Cargo Departures on 25L & 25R

## 13-month period



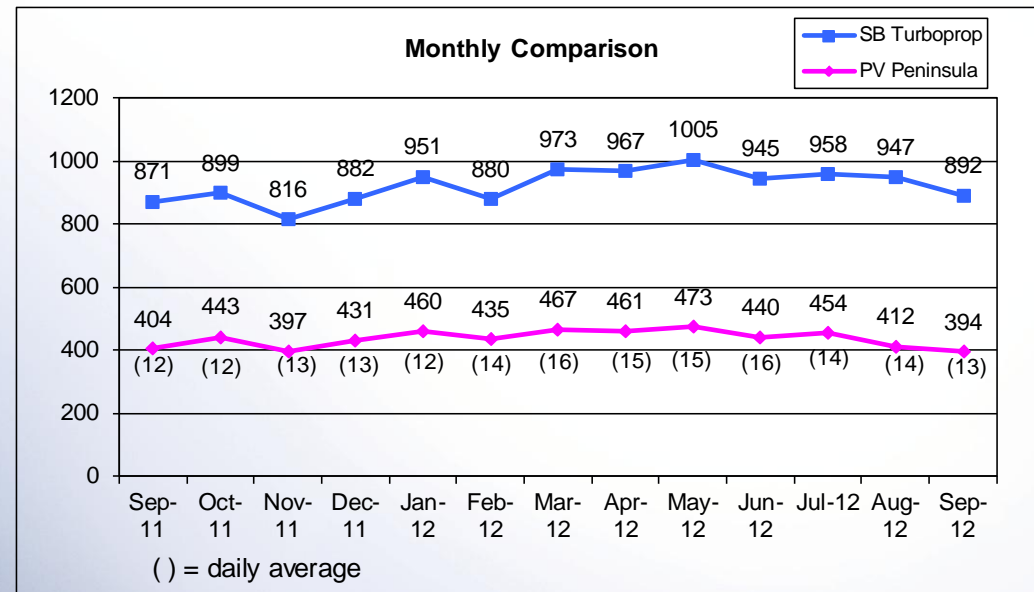
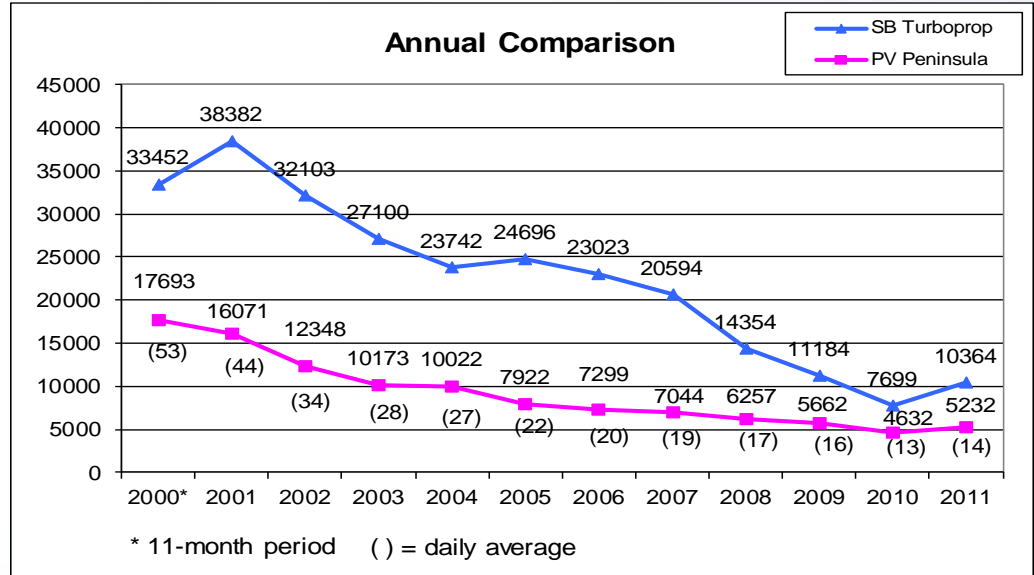
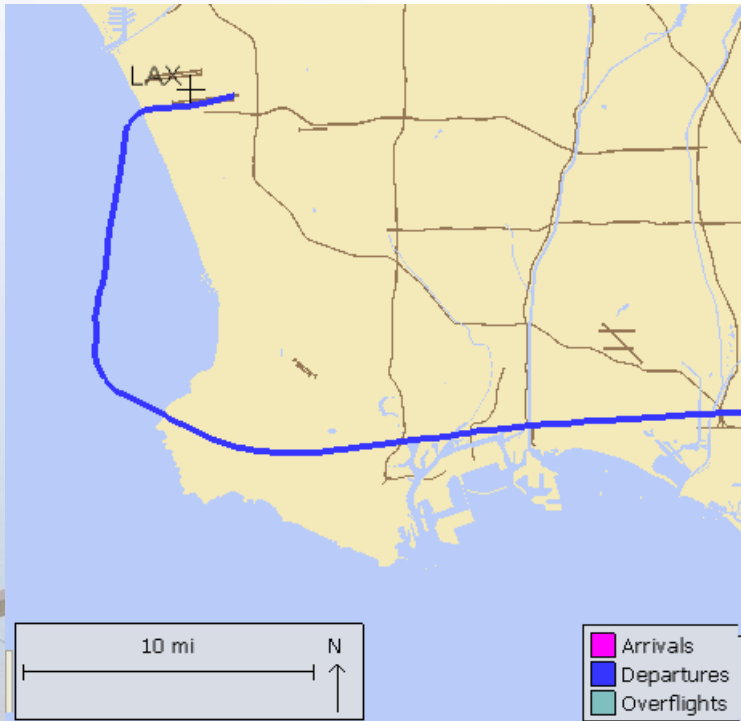


# Cargo Departures on 25L & 25R by Operator September 2012

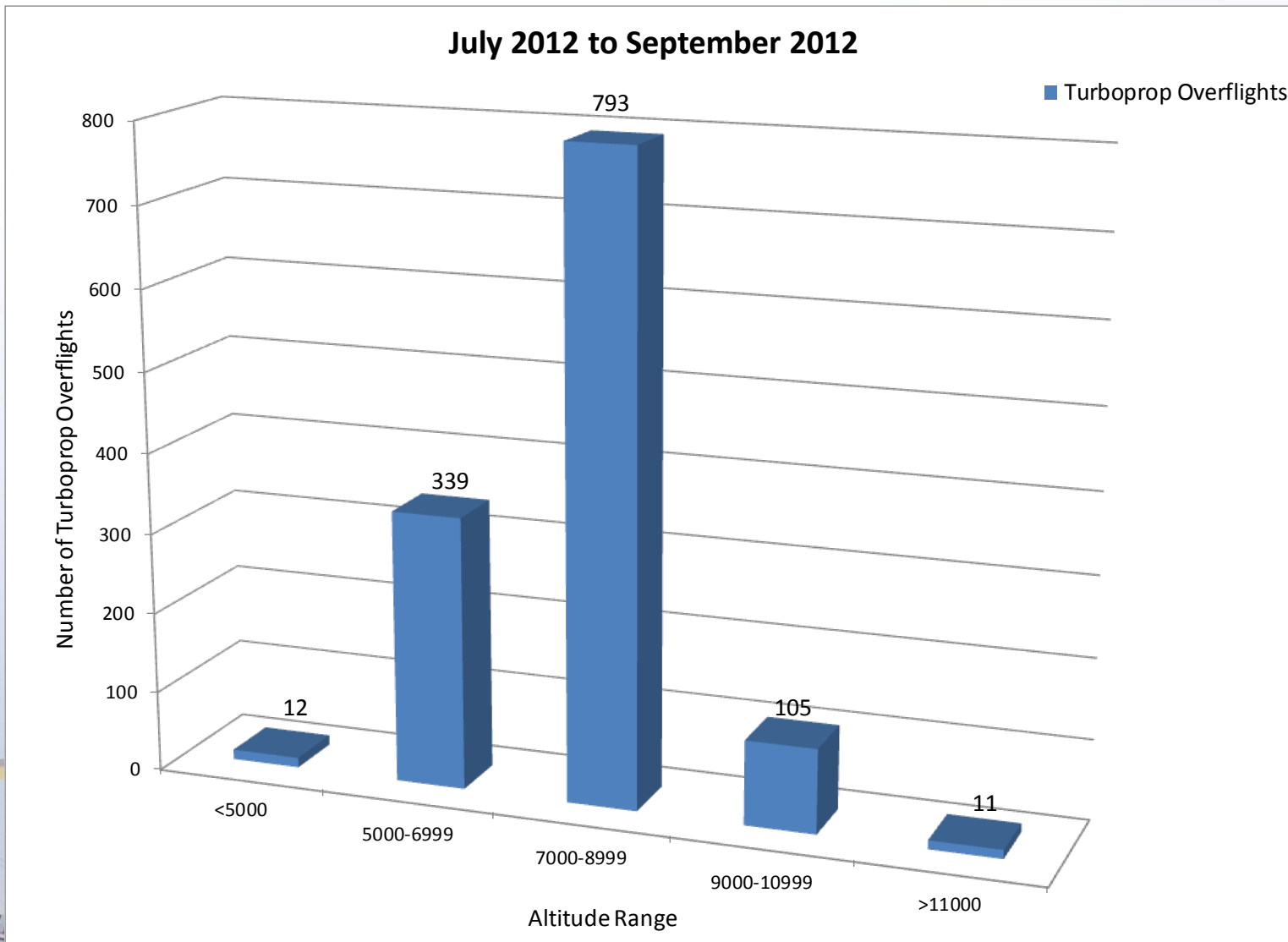


# Palos Verdes Peninsula – Turboprop Overflights

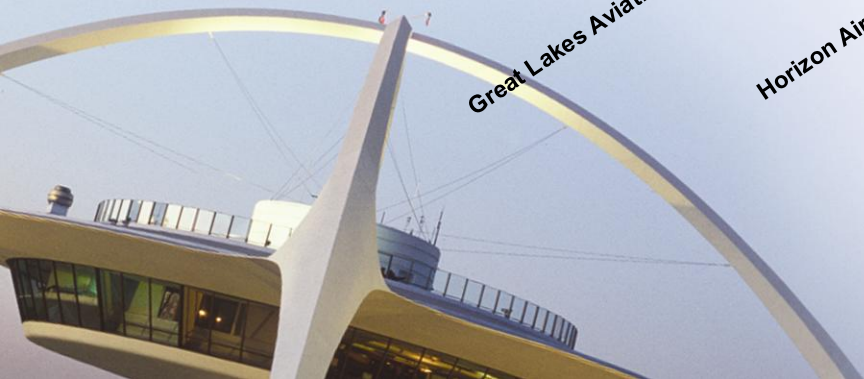
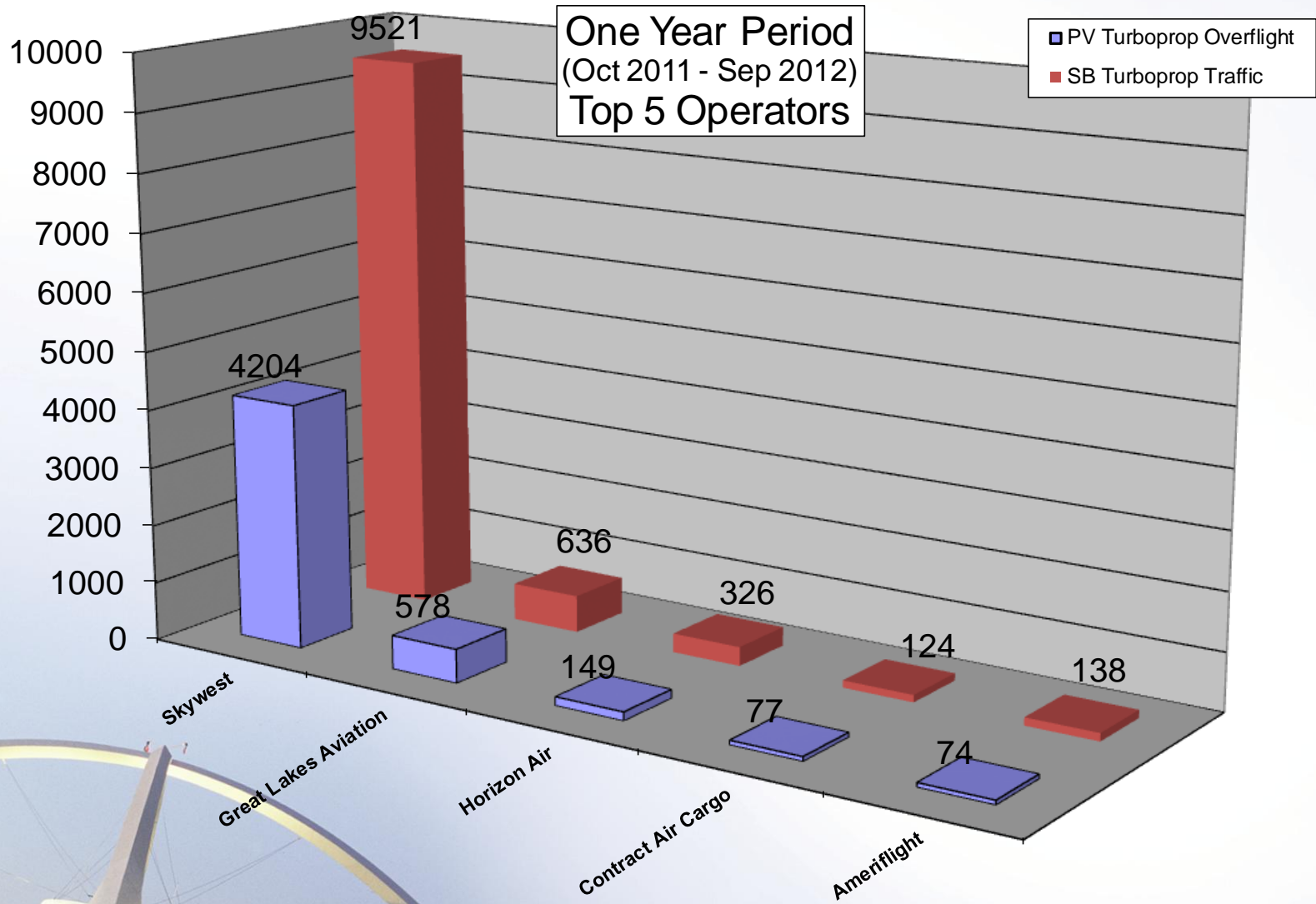
Monitoring southbound turboprops departing from LAX that overfly Peninsula



# Turboprop Altitudes over PV

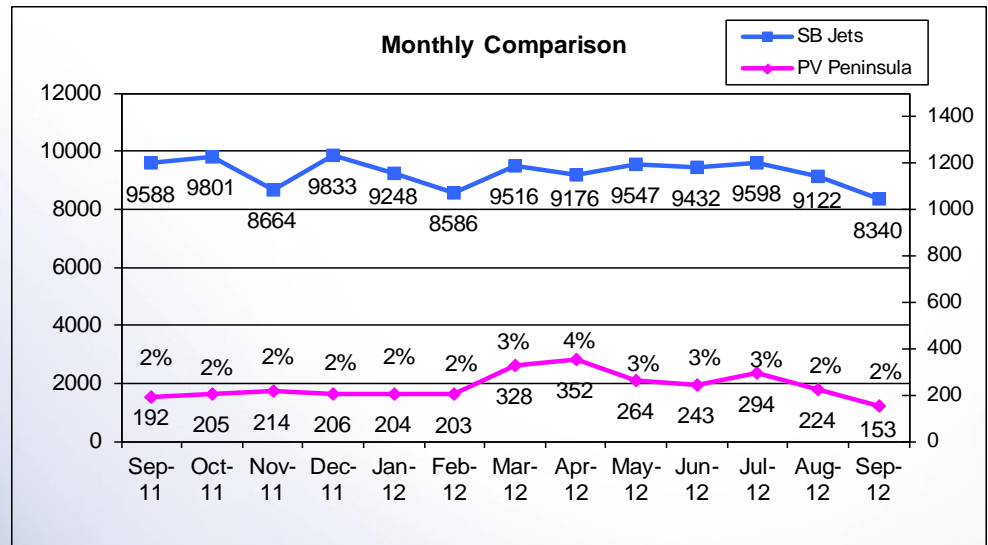
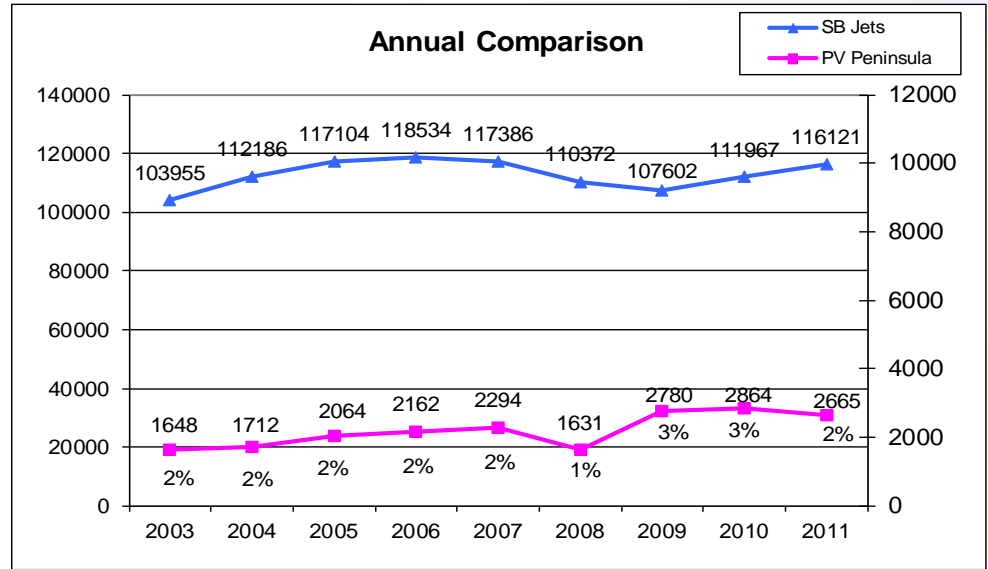


# Turboprop Operators



# Palos Verdes Peninsula – Jet Overflights

Monitoring southbound jets departing from LAX that overfly Peninsula



# Jet Altitudes over PV

July 2012 to September 2012

