



## **Reduced Vertical Clearance in the Central Terminal Area (CTA)**

Beginning July 28<sup>th</sup>, 2014 the height restriction on the arrival level inner curb lanes will be reduced to 10 feet 6 inches throughout the CTA. For additional details please reference the attached diagram.

For questions or comments regarding this advisory please contact the Construction Hotline at 310 649-5252.

**Issue Date: July 25, 2014**

**Subject: Reduced vertical clearance in the CTA**

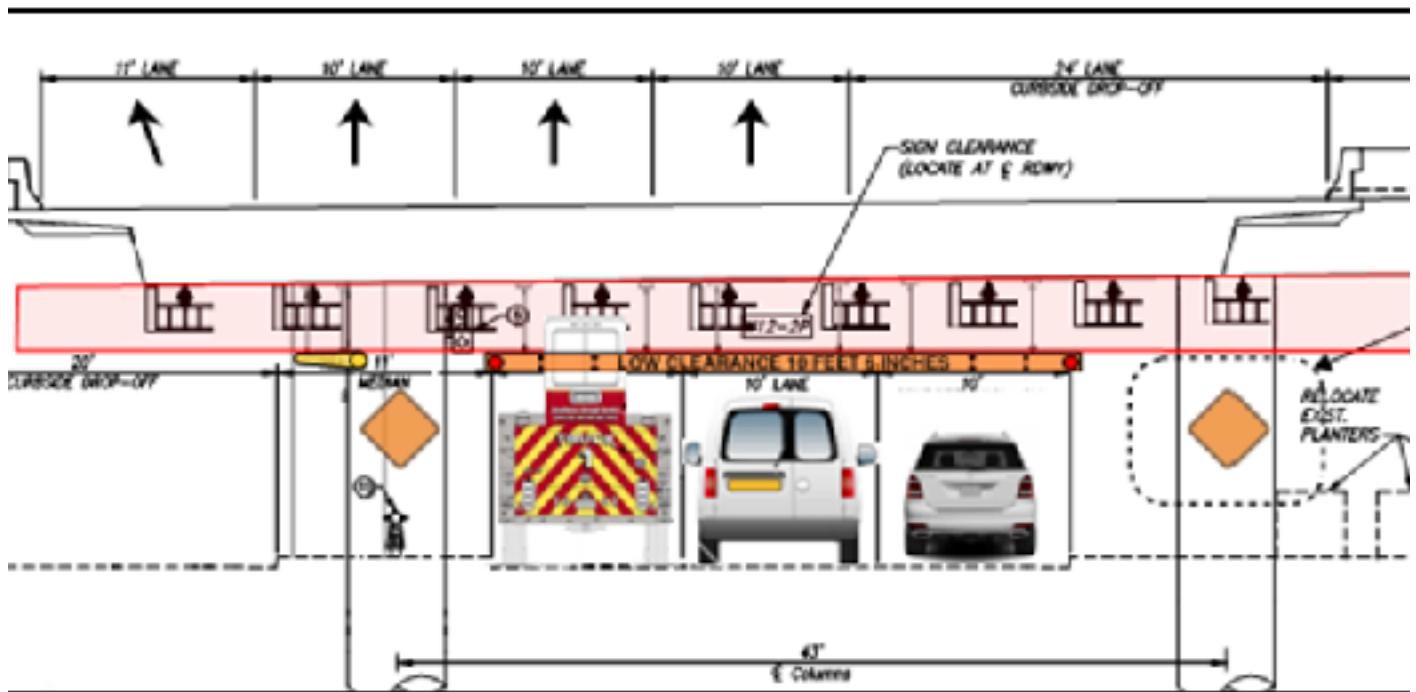
\*The LAX Operations Advisory will be posted on LAWA's Airport Operations web site and can be retrieved at <http://www.lawa.org/aiops.aspx>



## VERTICAL CLEARANCE 10FT 6IN



**Height Restriction Notification:** Beginning July 28, 2014, the height restriction on the **arrivals level inner curb lanes** throughout the **central terminal area** changes to 10 feet 6 inches.



**Questions:** If you have any questions concerning this notification, call the Construction Hotline at 310-649-5252.