

Vehicle Service Road Charlie Repaving Project – VSR Detours and Associated Taxiway Closures Required

Vehicle Service Road (VSR) Charlie will be closed between Taxiway L and Taxiway R for a repaving project starting February 10, 2020 through February 12, 2020. The closure hours will be 0030-1430L daily. Several taxiways will be closed to support this project. VSR Charlie traffic will be detoured onto the closed portion of Taxiway B around the repaving work area. Please see page two for an exhibit depicting the project limits and VSR detour plan.

Note: Due to a significant grade change for the VSR Charlie detour, aircraft servicing equipment with low ground clearance, such as deck loaders, will be detoured northbound to VSR Echo on the north complex of the airfield. Drivers operating deck loaders with low ground clearance that normally utilize VSR Charlie to transition between aircraft parking and maintenance facilities west of Taxiway L and facilities east of Taxiway L should plan to utilize one of the alternative routes depicted on page three.

Taxiway Closures:

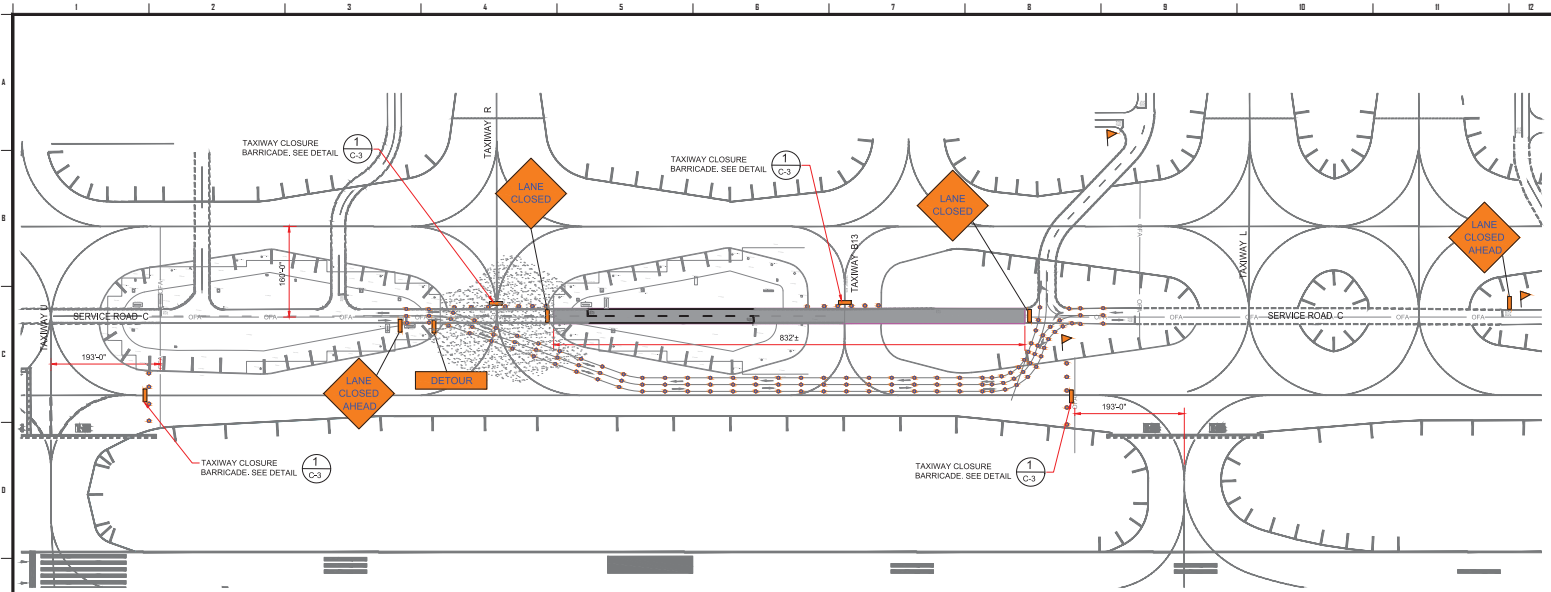
- Taxiway B between Taxiway L and Taxiway U closed daily 2/10/2020 (0030L) through 2/12/2020 (1430L).
- Taxiway R between Taxiway B and Taxiway C closed continuously 2/10/2020 (0030L) through 2/12/2020 (1430L).
- Taxiway B13 between Taxiway B and Taxiway C closed continuously 2/10/2020 (0030L) through 2/12/2020 (1430L).

For questions or comments regarding this advisory please contact Airside Manager, Jeff Mort, Jmort@lawa.org.

Issue Date: January 22, 2020**Subject: Vehicle Service Charlie Repaving Project – VSR Detours and Associated Taxiway Closures Required**

*The LAX Operations Advisory will be posted on LAWA's Airport Operations web site and can be retrieved at <http://www.lawa.org/airops.aspx>





**PAVEMENT REHABILITATION
TRAFFIC CONTROL PLAN**
SCALE: 1"=80'-0"

SCOPE OF WORK:

- MILL AND OVERLAY 3-INCH OF AC PAVEMENT (P401 MX)
- RE-STRIPE PAVEMENT MARKINGS PER PAVEMENT MARKING PLAN
- PROTECT ALL EXISTING UTILITIES SUCH AS DRAINAGE, POWER MANHOLE, ETC., DURING CONSTRUCTION

TRAFFIC CONTROL NOTES:

- BOTH LANES TO BE CLOSED FOR CONSTRUCTION
- TRAFFIC TO BE DETOURED PER PLAN
- FLAGGERS SHOULD BE EQUIPPED WITH RADIO
- * FLAGGER TO CONTROL GSE TRAFFIC IN THE AREA

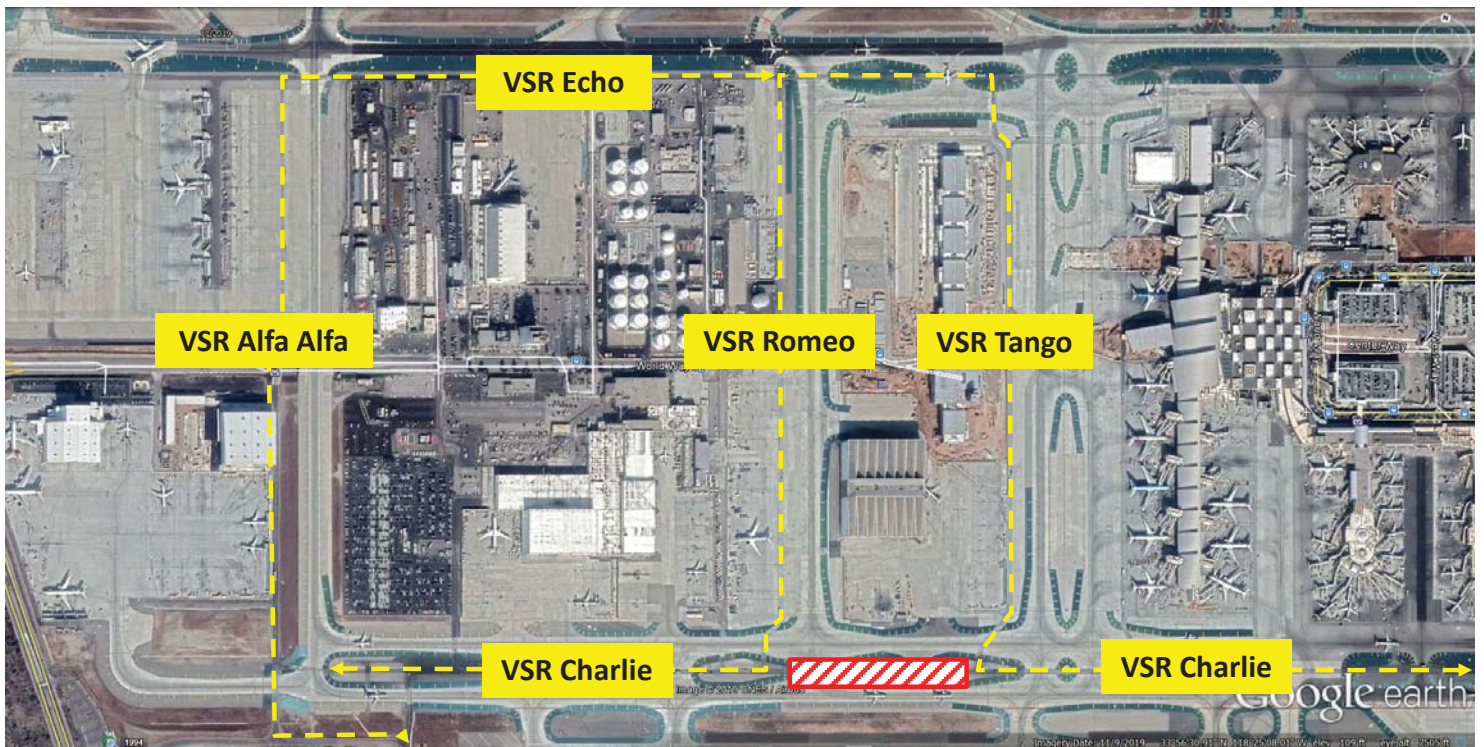
AREA:
22,500 SQ FT ±

- LEGEND:**
- EXISTING CONCRETE PAVEMENT
 - MILL AND OVERLAY 3-INCH OF AC PAVEMENT
 - DIRECTION OF TRAFFIC DETOUR
 - TRAFFIC DELINEATORS TO BE PLACED AT 40 FEET SPACING
 - SIGN PER PLAN
 - FLAGGERS STATIONED TO MAINTAIN TRAFFIC FLOW

DRAFT

		<i>Los Angeles World Airports</i> VSR C BET. TWY R & TWY L - PAVEMENT REHABILITATION PAVEMENT REHABILITATION AND TRAFFIC CONTROL PLAN LOS ANGELES INTERNATIONAL AIRPORT			
		DESIGNED BY: _____ <small>SEEL CHIEF AIRPORTS ENGINEER</small>	CHECKED BY: _____ <small>CHIEF AIRPORTS ENGINEER</small>	PLAN SET NUMBER: _____ <small>03 OF 3</small>	SHEET: _____ <small>C-1</small>
SCALE: _____ <small>AS SHOWN</small>	DATE: _____ <small>12-04-2019</small>	DRAW NO.: _____	FILE NAME: _____ <small>20190544-C1</small>	20190544	

VSR Charlie Detour for Deck Loaders and Equipment with Low Ground Clearance During VSR Charlie Repaving Project 2/10/2020 – 2/12/2020 (Effective Daily 0030-1430L)



Vehicles and equipment with normal ground clearance will be detoured onto closed segment of Taxiway B. Vehicles and equipment with low ground clearance (such as deck loaders) will be detoured to VSR Echo around closed segment of VSR Charlie via VSR Tango, VSR Romeo, or VSR Alfa Alfa.