

LAX Specific Plan Amendment Study (SPAS) and Related Plan Amendments

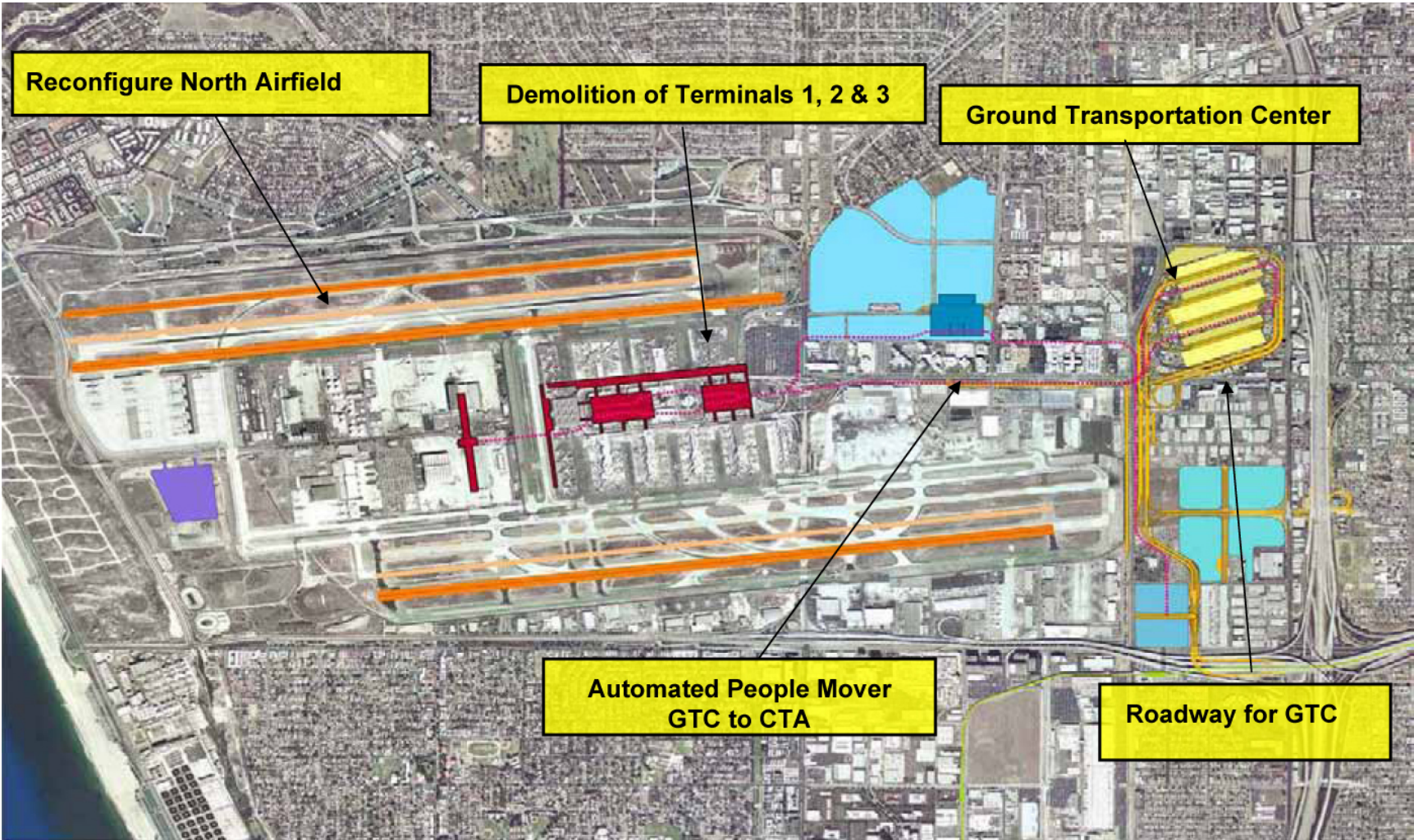
Los Angeles County Airport Land Use Commission
(ALUC)

March 27, 2013

Background

- The LAX Master Plan was adopted in December 2004
 - However, pursuant to the LAX Specific Plan adopted by the City Council, certain “Yellow Light” projects required additional study prior to final approval.
 - The LAX Specific Plan and LAX Master Plan Stipulated Settlement Agreement defined how this LAX Specific Plan Amendment Study (SPAS) was conducted.
- The “Yellow Light” Designated Projects are:
 - Reconfiguration of North Airfield
 - Ground Transportation Center (GTC)
 - Automated People Mover (APM) between Central Terminal Area (CTA) and GTC
 - Demolition of Terminals 1, 2 and 3
 - Roadways associated with GTC and APM

Yellow Light Projects



SPAS Documents

- **SPAS Environmental Impact Report (EIR) and Supporting Documents**
 - Project Objectives
 - Environmental analysis
 - Discloses impacts
 - Identifies mitigations

- **SPAS Report**
 - History and Concept Development
 - Financial analysis
 - Security evaluation

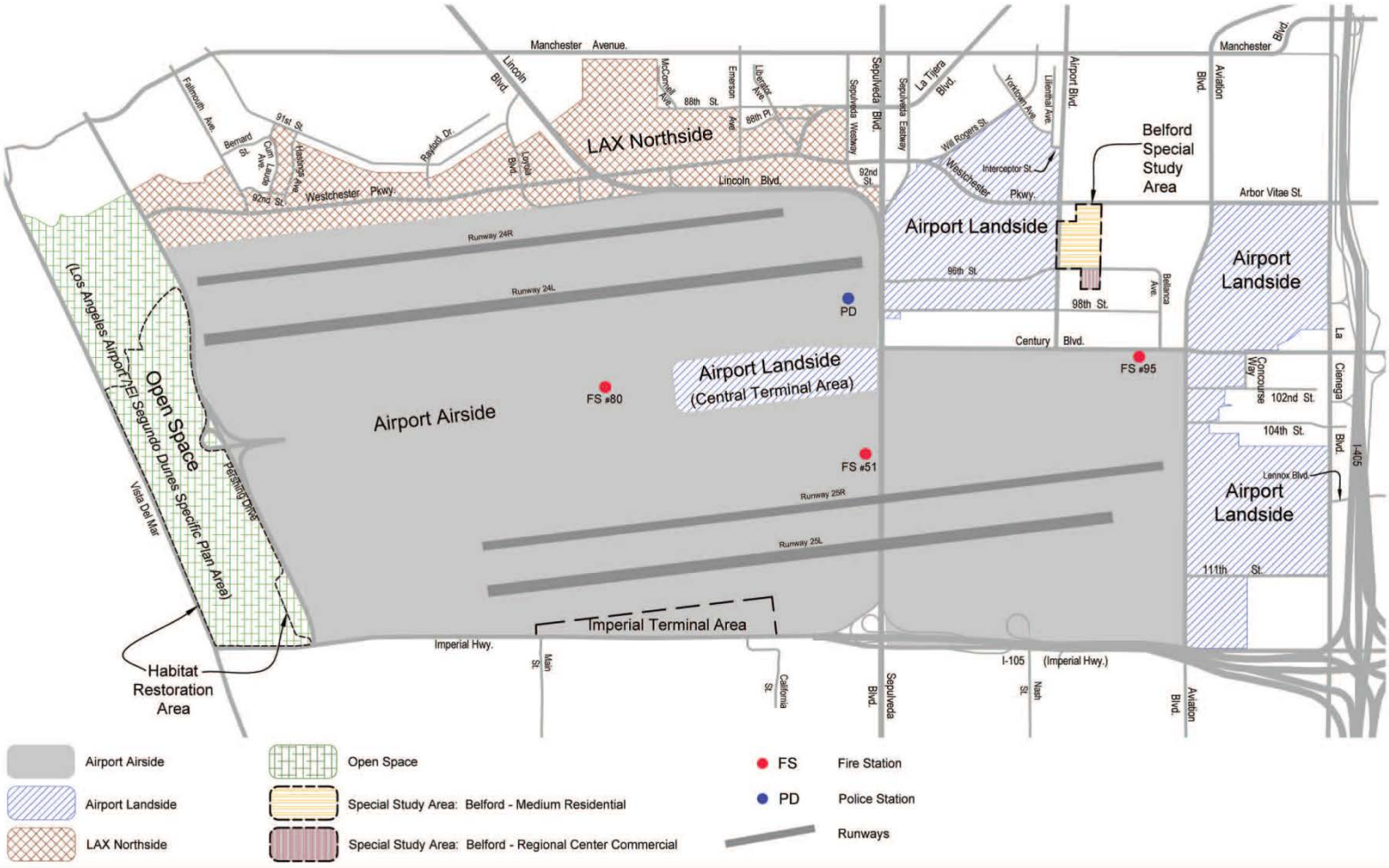
- **Approvals**
 - The LAX SPAS FEIR and SPAS Report were certified and approved by the Board of Airport Commissioners (BOAC) on February 5, 2013
 - The BOAC also selected the combination of SPAS Alternatives 1 & 9 as the best Alternative to the problems that the Yellow Light Projects were designed to address, subject to future detailed planning, engineering, and project-level environmental review through CEQA and NEPA.
 - BOAC's actions of February 5, 2013 are still subject to consideration by the L.A. City Council.

SPAS-Related Plan Amendments

- SPAS-Related Plan Amendments include amendments to the following:
 - LAX Plan (Community Plan for LAX)
 - LAX Specific Plan
 - Related General Plan Elements
 - Transportation
 - Noise
 - Westchester-Playa del Rey Community Plan

- Approvals:
 - Amendments to the SPAS-Related Planning Elements have been approved by the BOAC (2/5/13) and the City Planning Commission (2/14/13).
 - Approvals to be scheduled for consideration by the Los Angeles City Council.
 - State Aeronautics Act requires review by ALUC prior to City Council adoption.

LAX Plan Map



Printed: 05/17/2011 15:28:11 P:\LAX\10002321\Planning\Entirements\LAX_Plan_Landside_LP_11-0501-01.dwg #P/ax

LAX Plan

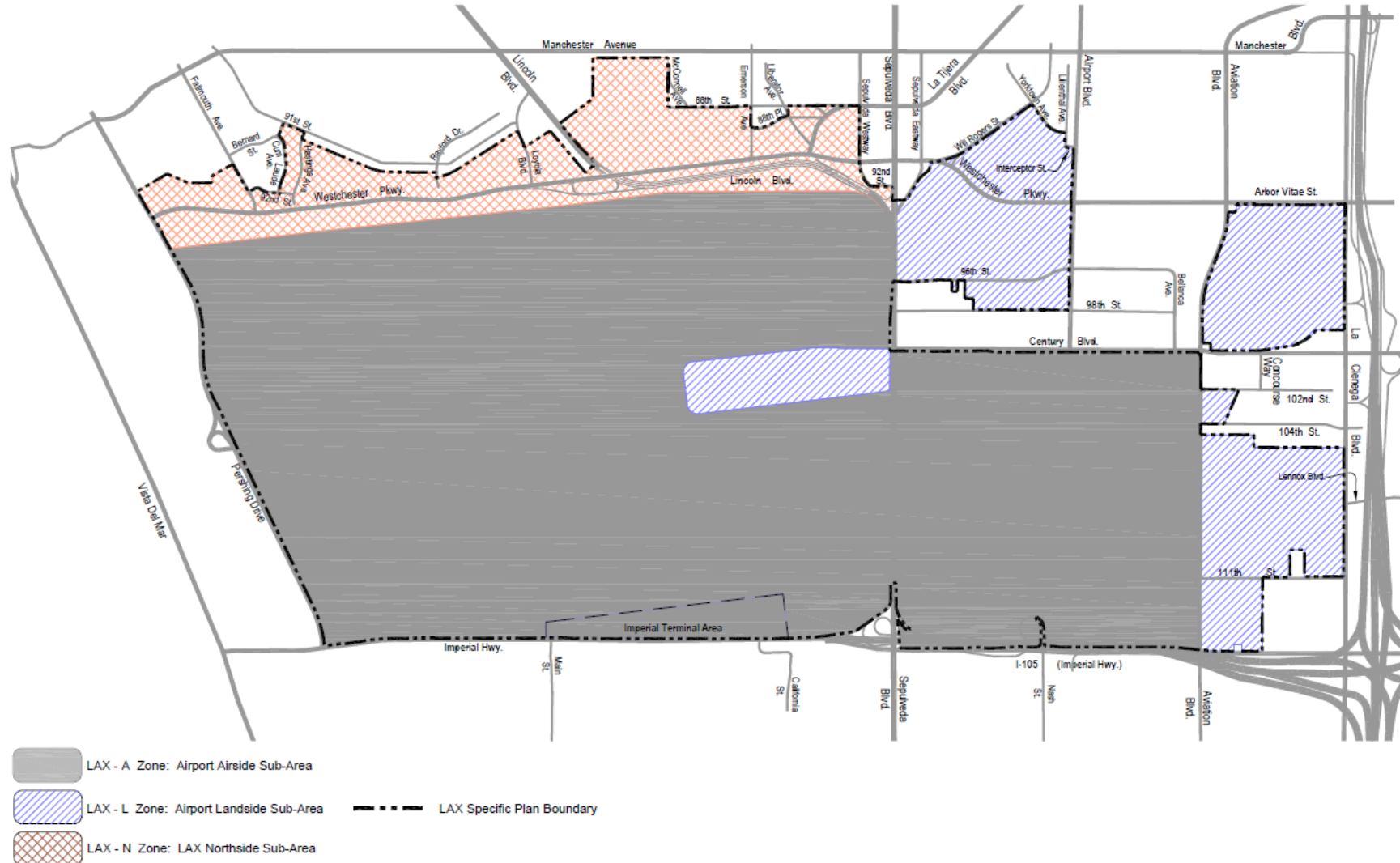
Not to Scale

Figure 1 Plan Areas

LAX Plan Amendments Summary

- Administrative/technical changes to ensure consistency among planning documents, including:
 - Updating airport statistics.
 - Updating references to policies and projects, and replacing Yellow Light projects with those in the BOAC-Selected Alternative.
 - Updating references to Metro Rail connections.
 - Updating references to LAX Specific Plan.
- Updates to LAX Plan maps to show smaller airport boundary and conceptual realignment of Lincoln Blvd.

LAX Specific Plan Map



LAX Specific Plan Amendments Summary

- Remove a requirement for a Specific Plan Amendment Study since that study has been completed.
- Adds requirement for Passenger & Airline Market Survey and Study when annual aviation activity forecast for LAX exceeds 75 million passengers.
- Administrative/technical changes to ensure consistency among planning documents, including updating references to the L.A. Municipal Code, removing references to Yellow Light projects and replacing them with references to new facilities included in the BOAC-Selected Alternative.
- Updates Specific Plan maps to show smaller airport boundary and conceptual realignment of Lincoln Blvd.

Other General Plan Amendments

- Transportation Element:
 - Technical amendments to update series of maps to reflect smaller airport boundaries and conceptual realignment of Lincoln Blvd.
- Noise Element:
 - Technical amendments to update statistical information and zoning references.
 - No changes to existing policies in the Noise Element.
- Westchester-Playa del Rey Community Plan (*see next map*):
 - Properties no longer planned for future airport use to be transferred from LAX Plan into the boundaries of the Westchester-Playa del Rey Community Plan Area, with previous land use designations to be restored for these properties.
 - Updating references to LAX and related transit improvements.

Additions to Westchester–Playa del Rey Community Plan

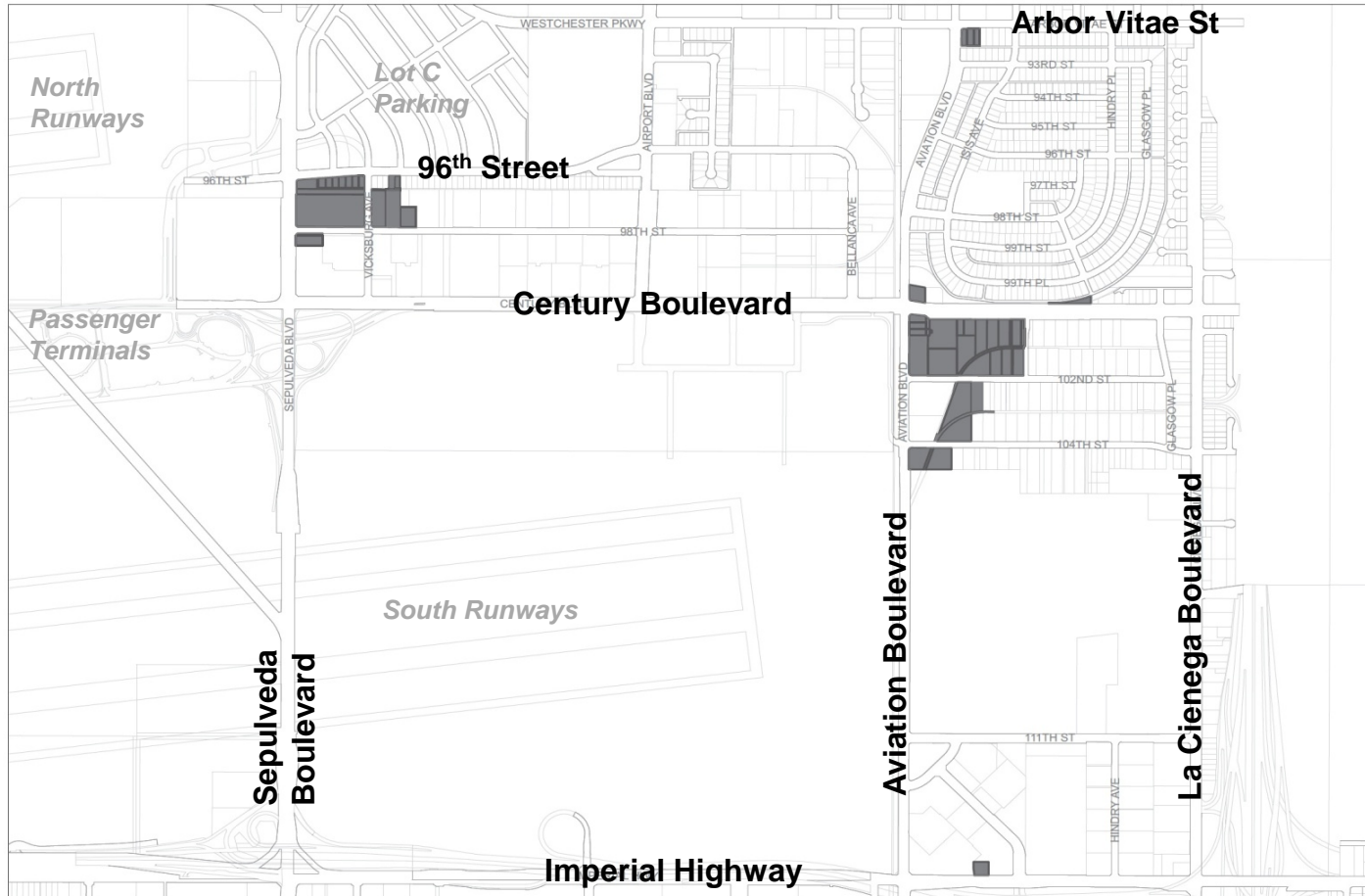


EXHIBIT C
General Plan Amendment Map - Areas of Proposed Boundary Change

Area of change



CPC DRAFT - February 14, 2013

Next Steps

- Consideration by Los Angeles City Council.
- If affirmed, SPAS project elements would require project-level design, engineering, and environmental analysis and additional approvals before construction could begin, including:
 - Detailed design and engineering.
 - Project-Level review under CEQA.
 - Environmental review under NEPA and approval of the Federal Aviation Administration (FAA).
- LAX Specific Plan requires additional studies if/when triggered by certain activity levels or traffic volumes.