

Appendix E1-8
LAX SPECIFIC PLAN AMENDMENT STUDY REPORT

Lincoln Boulevard

October 2010

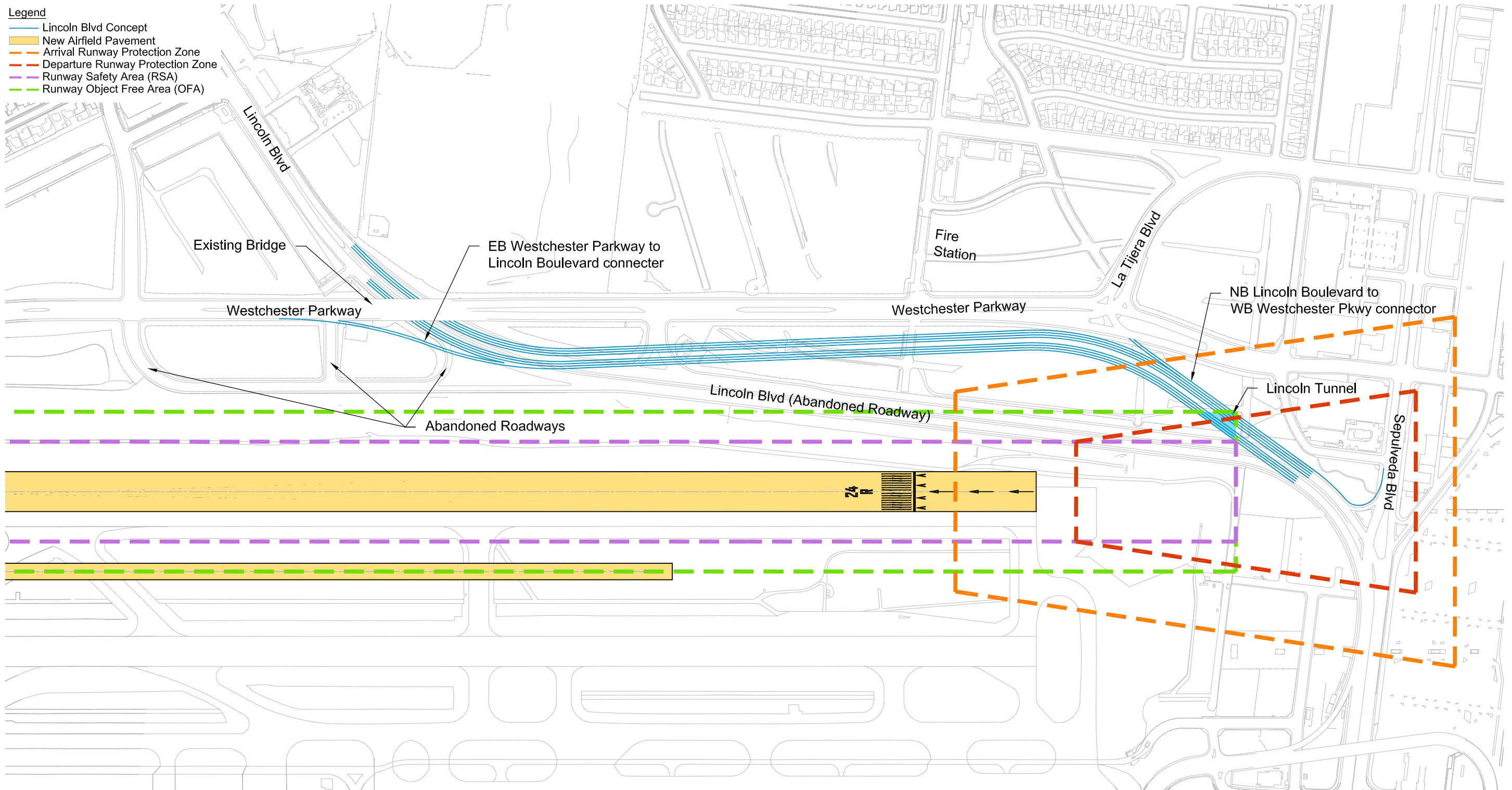
Prepared for:

Los Angeles World Airports
One World Way
Los Angeles, California 90045

Prepared by:

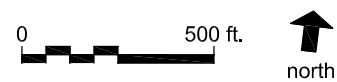
Ricondo & Associates, Inc.
1917 Palomar Oaks Way Suite 350
Carlsbad, CA 92008

- Legend**
- Lincoln Blvd Concept
 - New Airfield Pavement
 - Arrival Runway Protection Zone
 - Departure Runway Protection Zone
 - Runway Safety Area (RSA)
 - Runway Object Free Area (OFA)



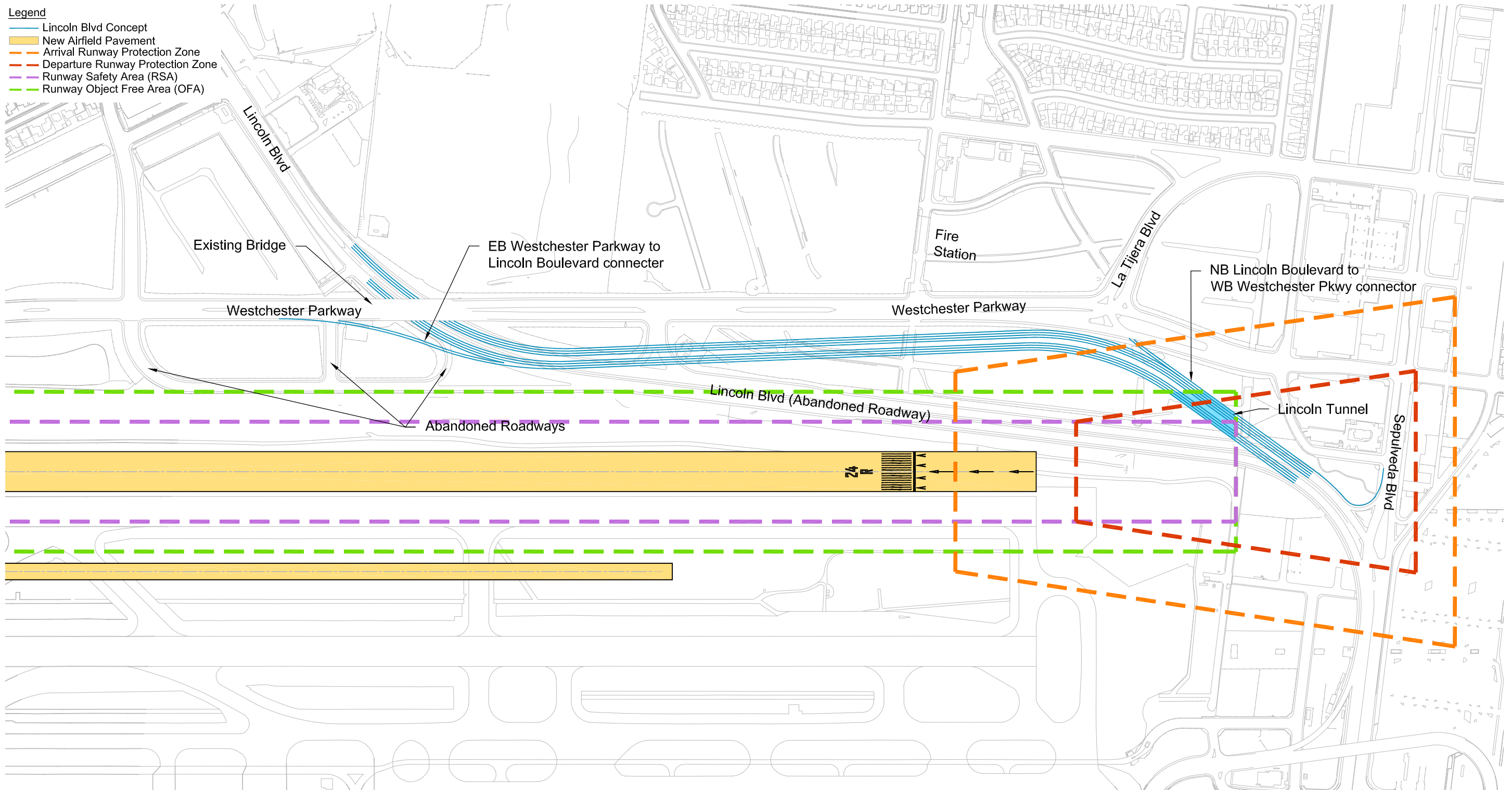
Source: Los Angeles International Airport Layout Plan, 2005; FAA AC 150/5300-13, *Airport Design*; Ricondo & Associates, Inc.
 Prepared by: Ricondo & Associates, Inc.

Exhibit 1



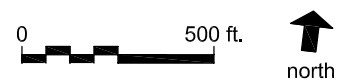
Review of Lincoln Blvd Concepts Runway 6L-24R Shifted 100 ft. North - Dual Displaced Thresholds

- Legend**
- Lincoln Blvd Concept
 - New Airfield Pavement
 - Arrival Runway Protection Zone
 - Departure Runway Protection Zone
 - Runway Safety Area (RSA)
 - Runway Object Free Area (OFA)



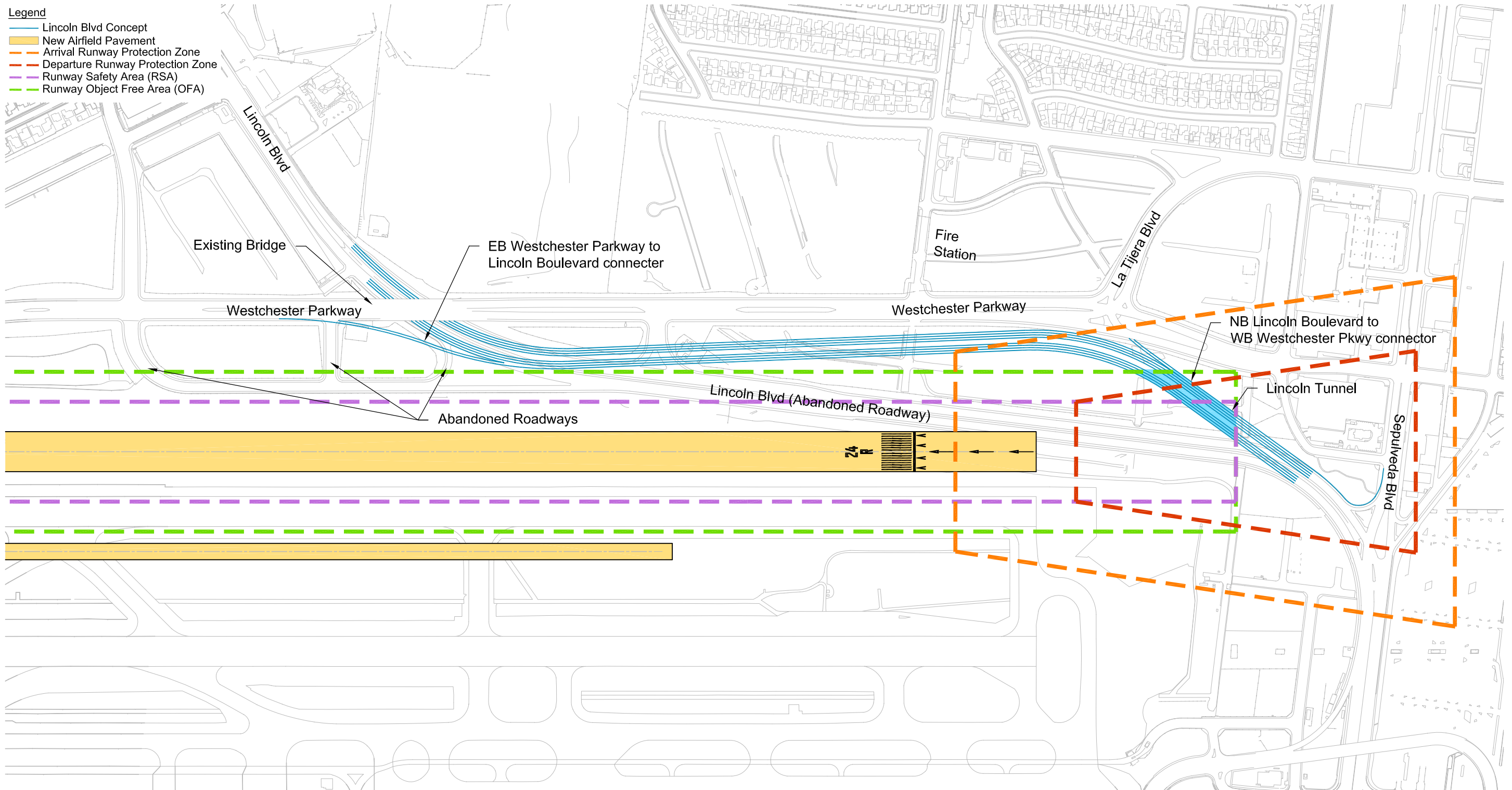
Source: Los Angeles International Airport Layout Plan, 2005; FAA AC 150/5300-13, *Airport Design*; Ricondo & Associates, Inc.
 Prepared by: Ricondo & Associates, Inc.

Exhibit 2



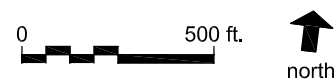
Review of Lincoln Blvd Concepts Runway 6L-24R Shifted 200 ft. North - Dual Displaced Thresholds

- Legend**
- Lincoln Blvd Concept
 - New Airfield Pavement
 - Arrival Runway Protection Zone
 - Departure Runway Protection Zone
 - Runway Safety Area (RSA)
 - Runway Object Free Area (OFA)



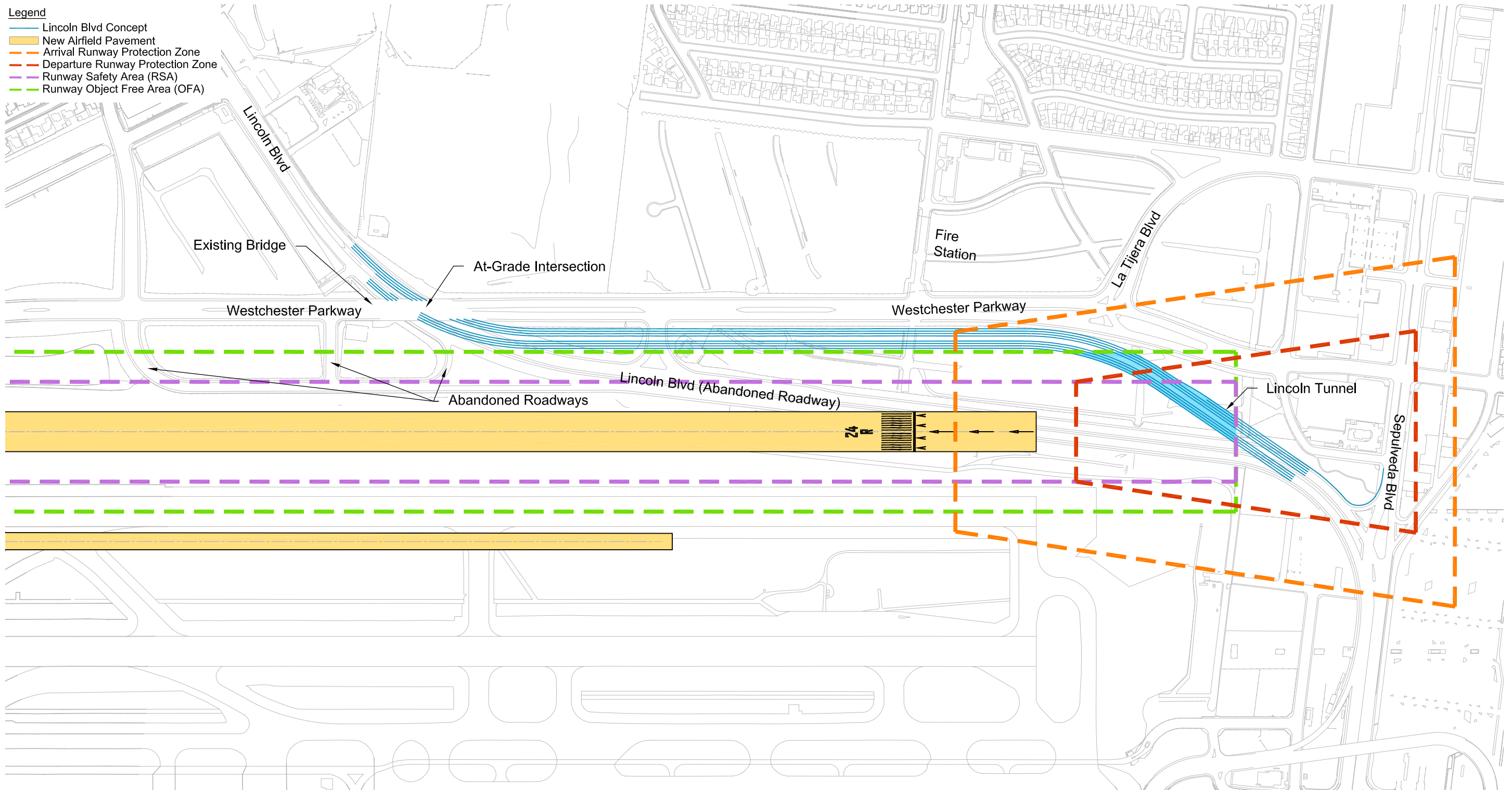
Source: Los Angeles International Airport Layout Plan, 2005; FAA AC 150/5300-13, *Airport Design*; Ricondo & Associates, Inc.
 Prepared by: Ricondo & Associates, Inc.

Exhibit 3



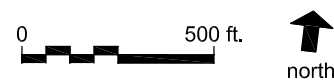
Review of Lincoln Blvd Concepts Runway 6L-24R Shifted 300 ft. North - Dual Displaced Thresholds

- Legend**
- Lincoln Blvd Concept
 - New Airfield Pavement
 - Arrival Runway Protection Zone
 - Departure Runway Protection Zone
 - Runway Safety Area (RSA)
 - Runway Object Free Area (OFA)



Source: Los Angeles International Airport Layout Plan, 2005; FAA AC 150/5300-13, *Airport Design*; Ricondo & Associates, Inc.
 Prepared by: Ricondo & Associates, Inc.

Exhibit 4



Review of Lincoln Blvd Concepts Runway 6L-24R Shifted 400 ft. North - Dual Displaced Thresholds

