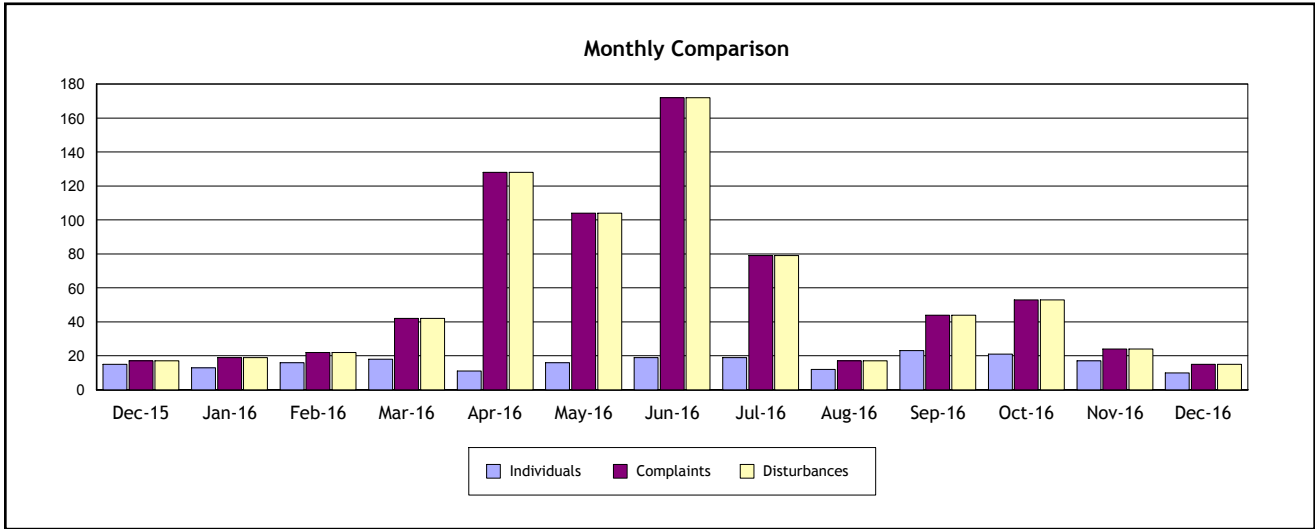


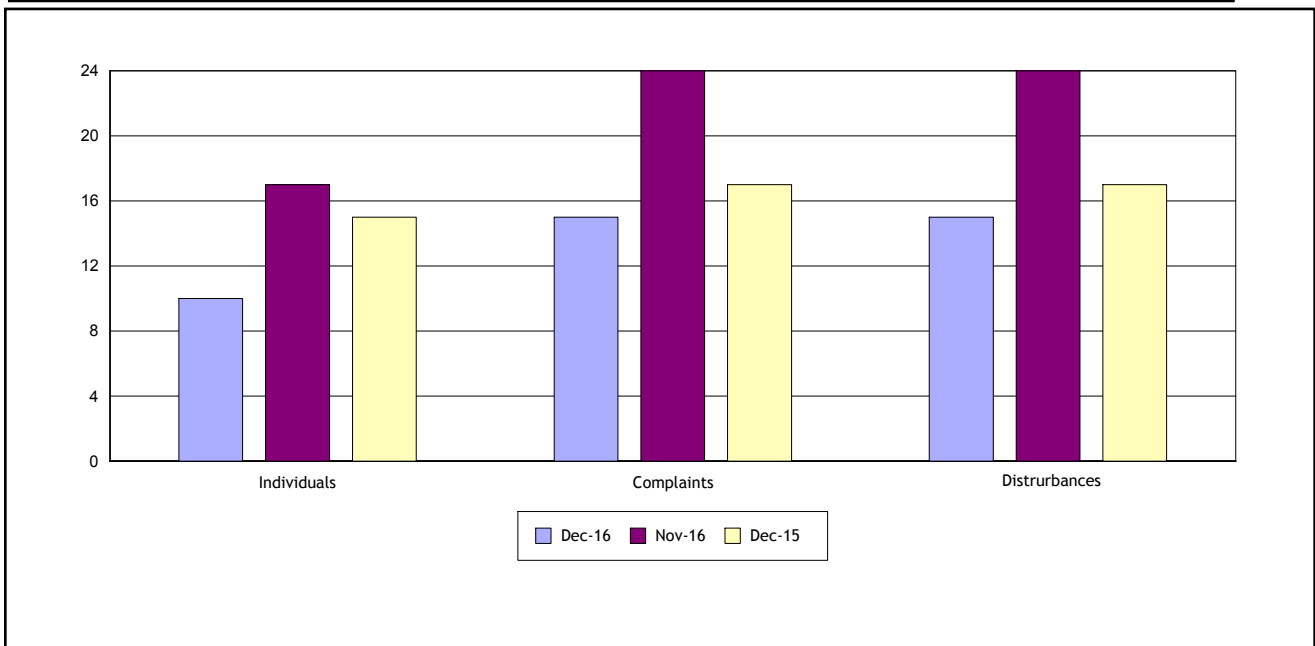
**Individuals Submitting Noise Complaints** 10

**Noise Complaints Received** 15

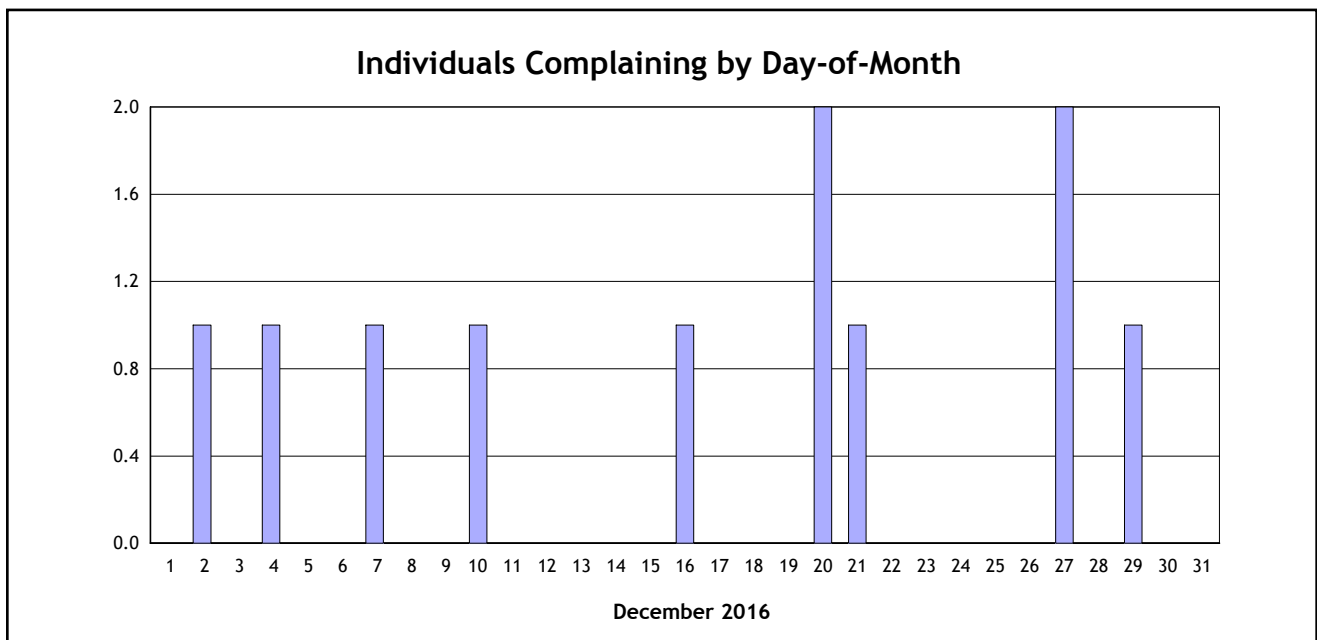
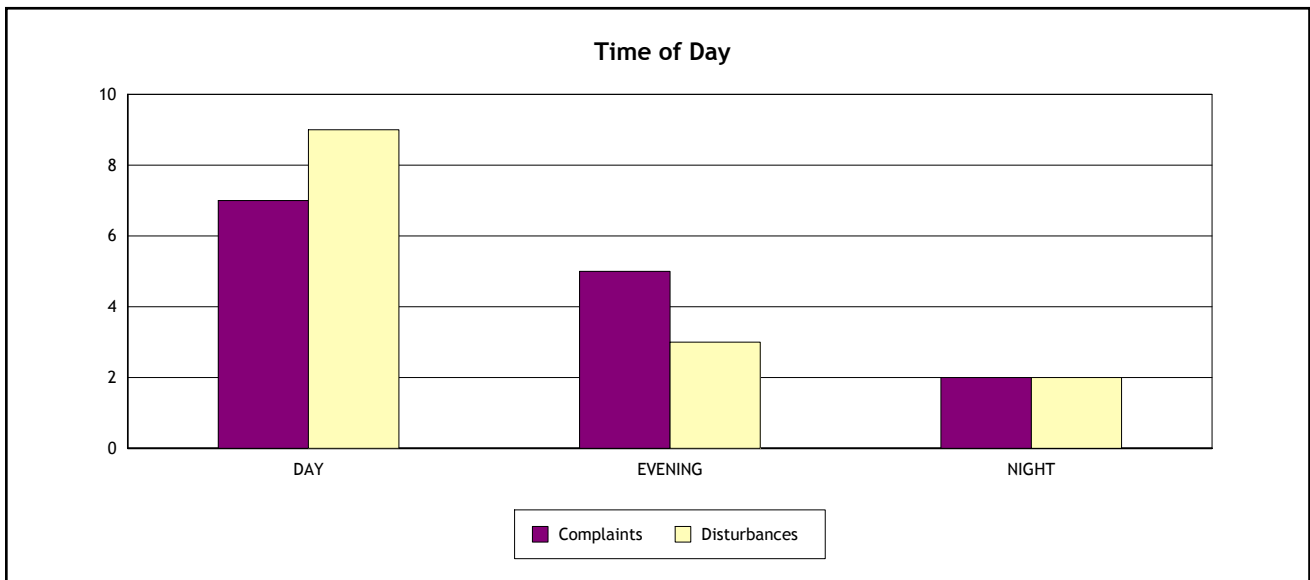
**Noise Disturbances Reported** 15



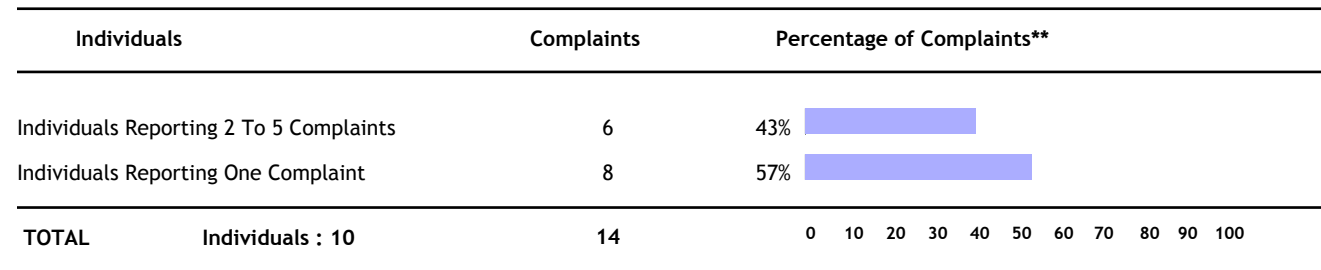
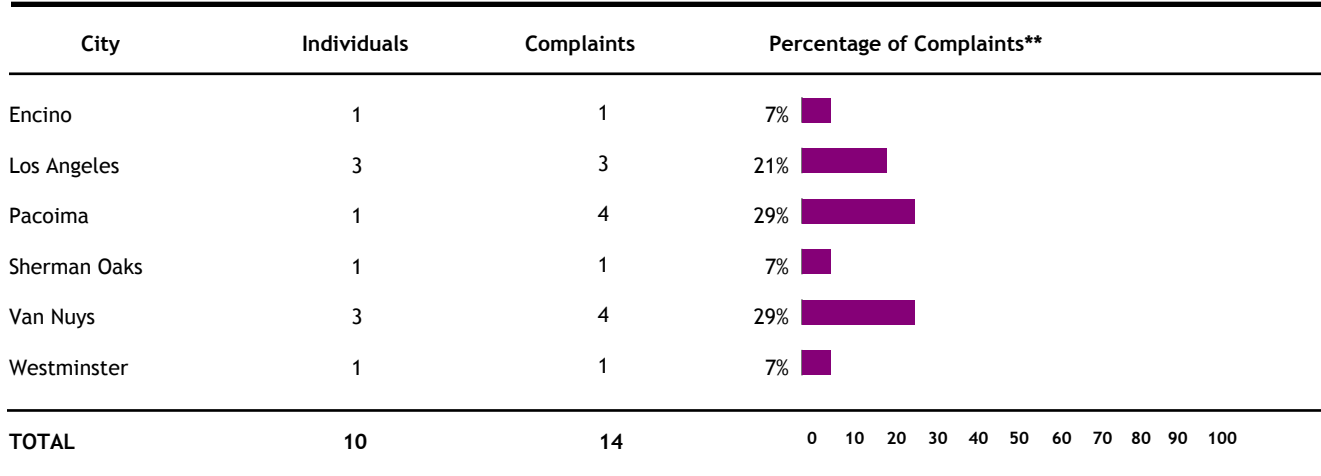
	December 2016	November 2016	% Change	December 2015	% Change
<b>Individuals</b>	10	17	-41%	15	-33%
<b>Complaints</b>	15	24	-38%	17	-12%
<b>Disturbances</b>	15	24	-38%	17	-12%



	Day ( 7:00 am - 7:00 pm)	Evening (7:00 pm - 10:00 pm)	Night (10:00 pm - 7:00 am)
Complaints	7	5	2
Disturbances	9	3	2



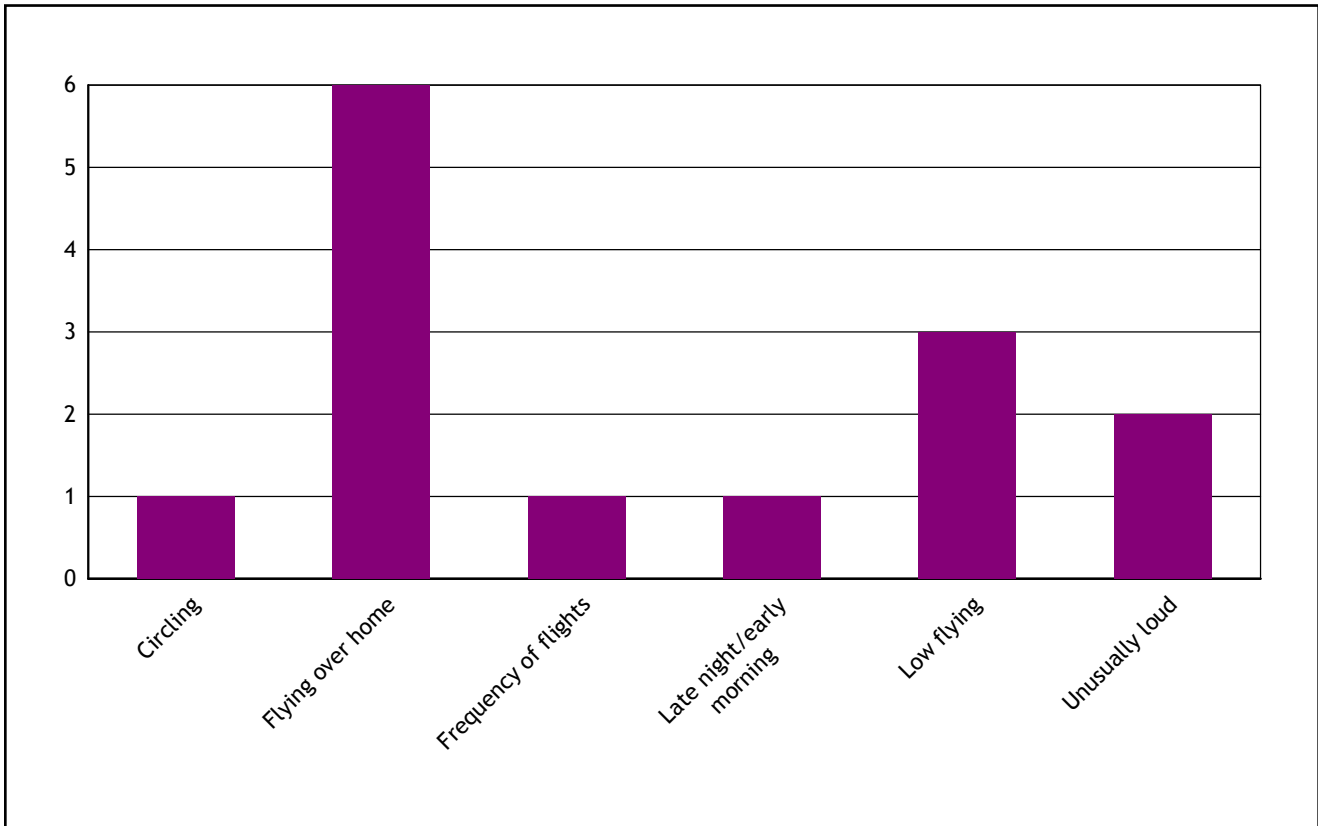
Period : December 2016



\* One individual reporting 6 or more complaints shown by city.

\*\* All percentages are rounded to the nearest whole number.

<i>Type of Disturbance*</i>	<i>Number of Complaints</i>
Circling	1
Flying over home	6
Frequency of flights	1
Late night/early morning	1
Low flying	3
Unusually loud	2
<b>TOTAL</b>	<b>14</b>



Note: \* As reported by complainant.

Contact		Disturbance		City	Disturbance**	Findings
Date	Time	Date	Time			
12/02/2016	4:15 pm	12/02/2016	4:15 pm	Westminster	Flying over home	The general complaint that you are referring to on Friday, December 2, 2016 at 16:15 was submitted to the Van Nuys Airport (VNY) noise complaint system and the issue raised is associated with operations at LAX. For future LAX noise issues, please visit <a href="http://www.lawa.org/laxanc/">http://www.lawa.org/laxanc/</a> for more information on submitting noise complaints or by calling the LAX Noise Complaint Line at (424) 64-NOISE.
12/04/2016	8:42 pm	12/04/2016	8:42 pm	Sherman Oaks	Flying over home	Flight patterns and altitudes for aircraft flying under Instrument Flight Rules (IFR) are standardized and determined by Federal Aviation Administration (FAA) procedures and electronic navigational aid equipment. These air routes are established to ensure flights, from various directions, receive adequate separation while approaching and departing Los Angeles area airports. Whenever southerly winds occur, which is approximately 85% of the time, all aircraft arrivals and departures are directed to head south into the wind due to aircraft safety requirements, and to maximize aircraft performance during takeoffs and landings. During these conditions, the FAA Controllers conduct Southerly Operations at VNY. Please note that your residence is located in close proximity to the standard departure route for runway 16R and is subject to numerous departing aircraft. Aircraft do not fly over a line on the ground. Aircraft executing the same procedures will have a natural spread where they fly over the ground. Lastly, airports do not have jurisdiction on aircraft in flight. The FAA has ultimate authority over aircraft flight patterns and regulates virtually all aviation activity. This includes takeoffs, landings, altitudes and direction of flight with the major emphasis on safety. Please contact the FAA at FAA Western-Pacific Region, P.O. Box 92007, Los Angeles, CA 90009 for more information regarding this matter.
12/16/2016	4:07 pm	12/10/2016	8:55 am	Los Angeles	Flying over home	The aircraft noise and incident you reported on Saturday, December 10, 2016 at 08:55 was associated with Bombardier Global 6000 jet departure from Van Nuys Airport (VNY) runway 16R under the control and direction of Federal Aviation Administration (FAA) Air Traffic Controllers (ATC). The departure was consistent with normal VNY departure operations but was lower than expected as you observed and reported over your neighborhood. The aircraft was climbing over your neighborhood between approximately

Note : Investigation currently limited to one report of disturbance per complaint, and a maximum of five complaints per individual per month.

\* Complaints exceeding monthly limit and/or anonymous complaints are not investigated and are not shown.

\*\* Disturbance is as reported by complainant.

Contact		Disturbance		City	Disturbance	Findings
Date	Time	Date	Time			
12/27/2016	8:06 pm	12/27/2016	5:07 pm	Los Angeles	Low flying	<p>2050 and 2735 feet above Mean Sea Level (MSL) as measured by VNY's Airport Noise and Operations Monitoring System (ANOMS). No further details were available in ANOMS regarding the circumstances of this flight but the FAA Flight Safety District Office (FSDO) has been contacted by the Noise Management office on your behalf. If you are not contacted by the FSDO, then please write the FAA at FAA Western-Pacific Region, P.O. Box 92007, Los Angeles, CA 90009.</p> <p>The helicopter you reported on Tuesday, December 27, 2016 at 17:07 was an overflight not associated with Van Nuys Airport (VNY) operations. VNY's Airport Noise and Operations Monitoring System (ANOMS) identified the aforementioned helicopter as departing from Hawthorne Municipal Airport (HHR) at 17:03. Please call HHR (310) 970-7215 for further information regarding this operation.</p>

Note : Investigation currently limited to one report of disturbance per complaint, and a maximum of five complaints per individual per month.

\* Complaints exceeding monthly limit and/or anonymous complaints are not investigated and are not shown.

\*\* Disturbance is as reported by complainant.