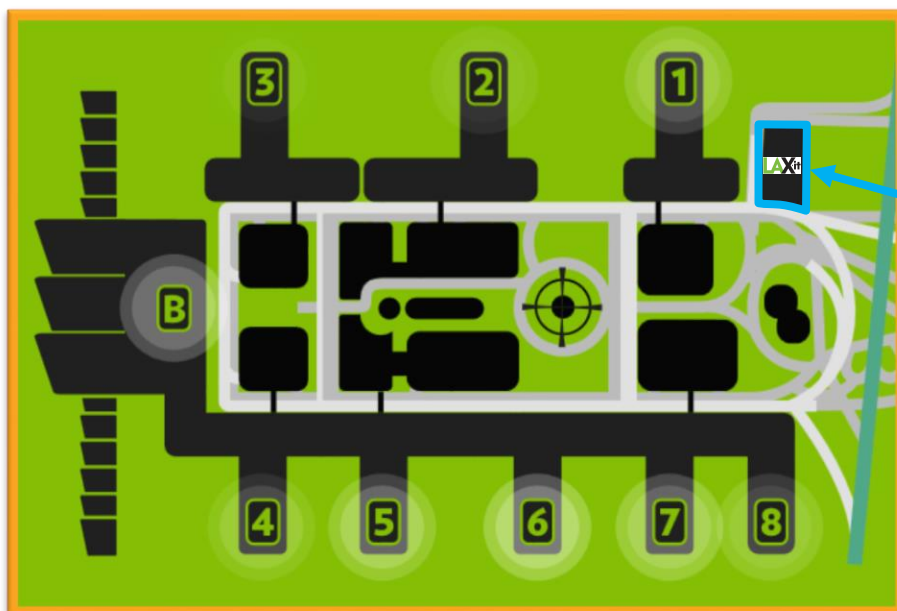


Construction Hot Topics

Week of October 28, 2019

1. **LAXit** Opens Tuesday, October 29 at 3AM

- **LAXit**, located east of Terminal 1, will provide a centralized location for passengers to get picked up by Taxi or a Ride App Pickup (Lyft, Opoli or Uber)
- Passengers can walk or take a dedicated shuttle (Arrivals Level, Inner Lanes) to the lot
- Passengers should follow directions on respective smartphone apps to hail their ride
- Drop off for Taxis and Ride Apps will remain curbside on the Departures Level at each terminal
- More information can be found [here](#)



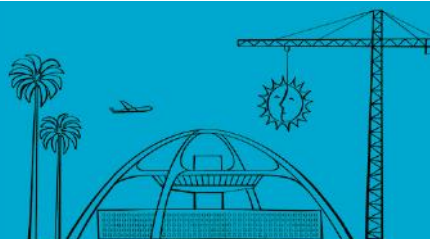
Location of **LAXit**
East of Terminal 1



Green **LAXit** Shuttle
Arrivals Level Inner Lanes

Change is in the Air(port).

LAX WAY BETTER. REALLY.



Construction Hot Topics

Week of October 28, 2019

2. Changes to Ground Transportation

Major changes to Ground Transportation operations, including pickup zones and waiting areas, will go into effect Tuesday, October 29, 2019 at 3AM

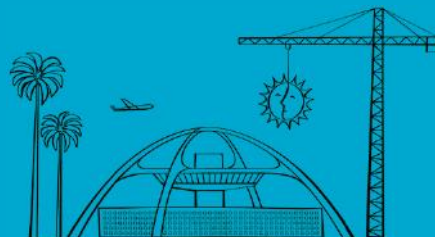
- **Arrivals (Lower) Level, Inner Curb: LAWA Shuttles Only**
 - LAX FlyAway
 - Airlines Connections, City Bus Center – LAX, Economy Lot E, Metro Green Line, and LAX Employee Lots
 - LAX-it Shuttle: Free Shuttle to Taxi, Lyft, Opoli and Uber
- **Arrivals (Lower) Level, Outer Curb:**
 - Shared Ride Vans, Scheduled Service Buses and Charter Buses
 - Passenger Pickup
 - Rental Car Shuttles
- **Departures (Upper) Level:**
 - Hotel and Private Parking Shuttles

Wayfinding Signage for new Ground Transportation locations



Change is in the Air(port).

LAX WAY BETTER. REALLY.

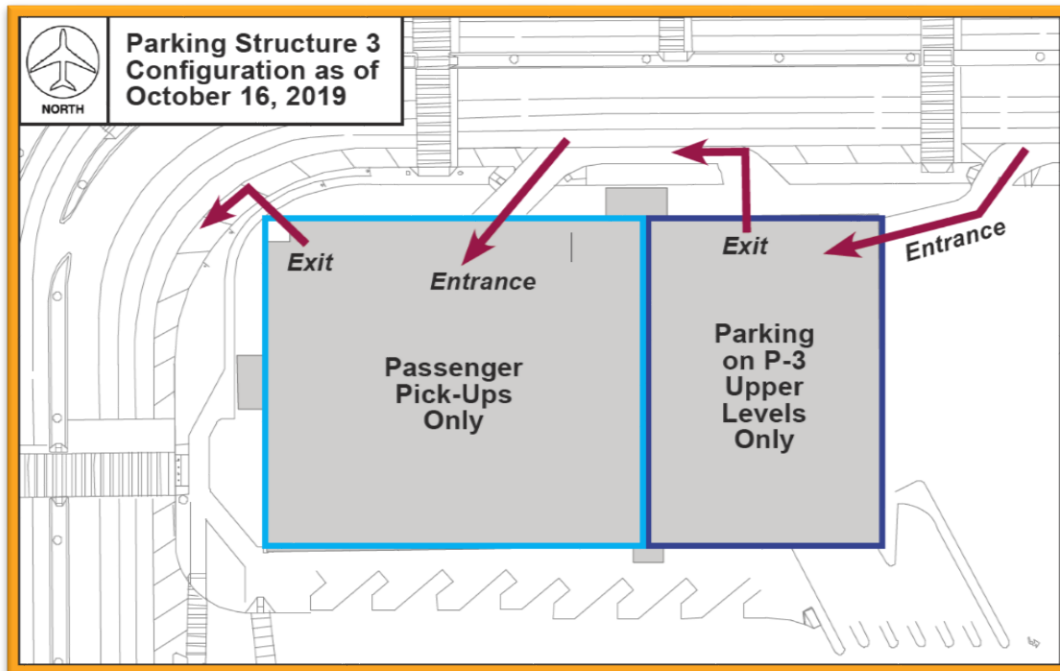


Construction Hot Topics

Week of October 28, 2019

3. Parking Structure 3: Additional Passenger Pickup

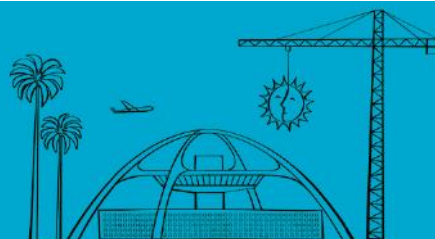
- The Terminal B Pickup Area, located on the lower level of Parking Structure 3, is open for passenger pickup; arriving guests and their rides should follow the burgundy signs to reach the pickup area
- Terminal B Pickup is optional for use (curbside pickup still allowed) and is free for privately owned vehicle use; it is not free parking and unattended vehicles are subject to citation or tow



Terminal B Pickup Area at Parking Structure 3, Level 1

Change is in the Air(port).

LAX WAY BETTER. REALLY.



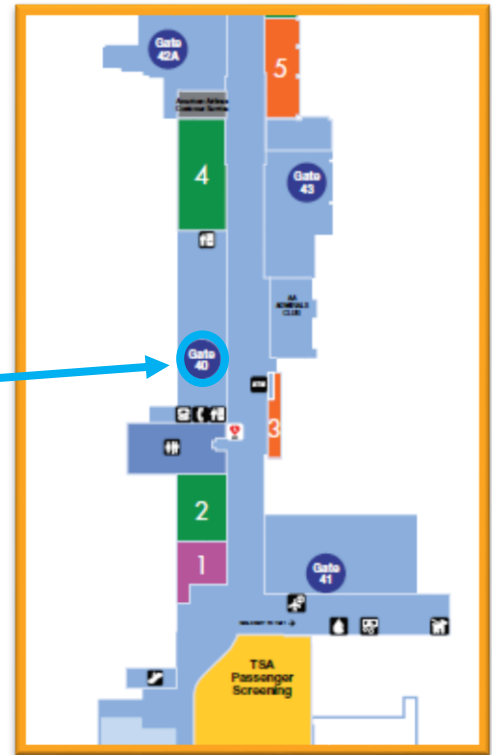
Construction Hot Topics

Week of October 28, 2019

4. Airline Gate 40 Closed

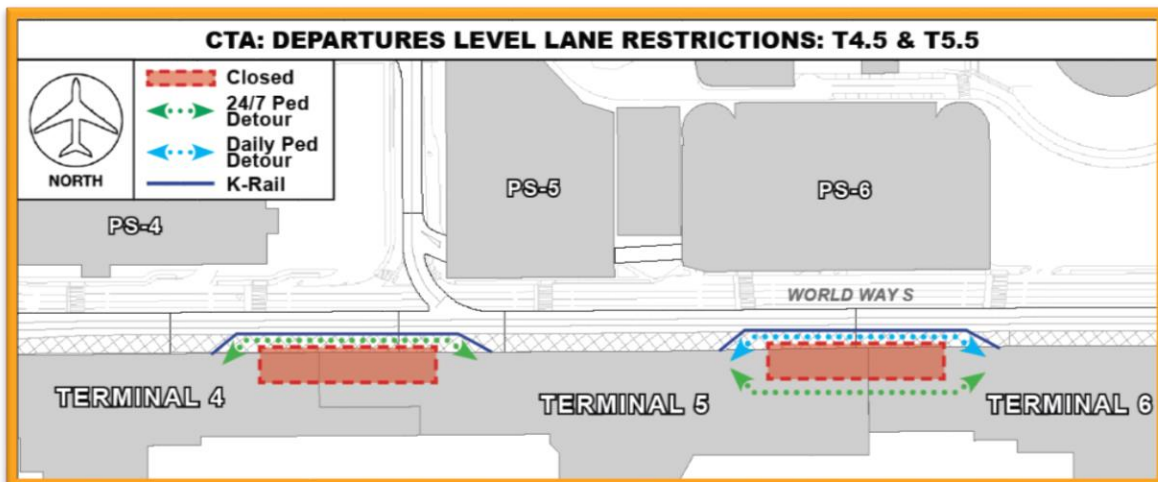
- Airline Gate 40 in Terminal 4 (across from the AA Admirals Club) is scheduled to close October 28 through November 2, 2019
- Hold room seating is not affected by this closure and will remain available for passenger use

Airline Gate 40



5. CTA Departures Level: Terminal 4.5 Canopy Demolition

- Work to demolish the canopy between Terminals 4 and 5 (T4.5) is scheduled to be completed this week by Thursday, October 31 as part of the Terminal 4.5 Cores project
- Both drop-off lanes, which are currently closed to facilitate a temporary pedestrian walkway detour, will re-open upon completion
- Canopy demolition between Terminals 5 and 6 (T5.5) is scheduled to continue through mid-November 2019



Change is in the Air(port).

LAX WAY BETTER. REALLY.

