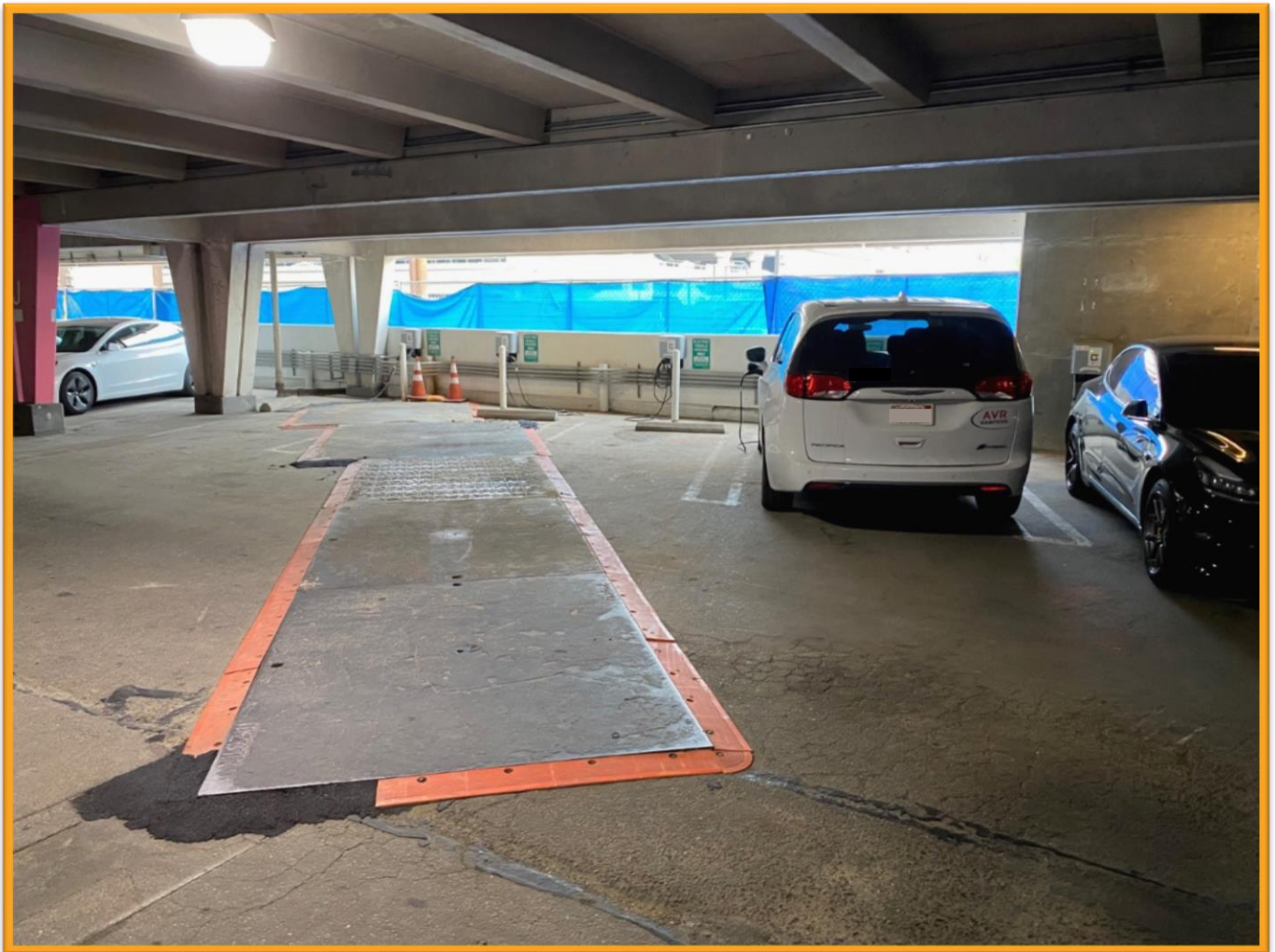


# Construction Hot Topics

Week of August 17, 2020

## 1. Parking Structure 7: Electric Vehicle (EV) Chargers

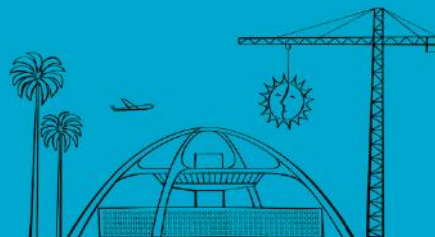
- Additional EV Chargers in Parking Structure 7 have temporarily returned for public use following the completion of a phase of utility work for the Automated People Mover project



*Parking Structure 7 EV Charger parking stalls available for public use*

Change is in the Air(port).

**LAX** WAY BETTER. REALLY.



# Construction Hot Topics

Week of August 17, 2020

## 2. Automated People Mover: CTA Construction Update

- Foundation work for the APM's future West Station continues between Parking Structures 3 and 4, across from Tom Bradley International Terminal
- The tower crane that will assist in the construction of the infill parking structure and future West Station is currently being built, which is expected to be in use by mid-September 2020

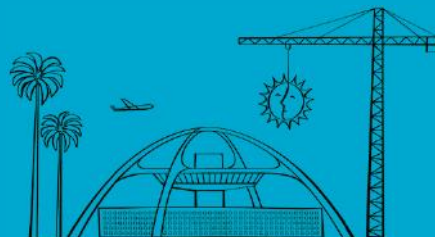
*Tower crane base*



*APM West Station construction between Parking Structures 3 & 4*

Change is in the Air(port).

**LAX** WAY BETTER. REALLY.





# Construction Hot Topics

Week of August 17, 2020

## 3. Terminal 4.5: Construction Update

- Construction is progressing on the future Terminal 4.5 Core, which will provide connectivity between Terminals 4 and 5 and connect to the future APM West Station
- Pictured right is a rendering of the final building, complete with connecting pedestrian bridge
- Pictured below, foundation work for elevator / escalator pits is underway

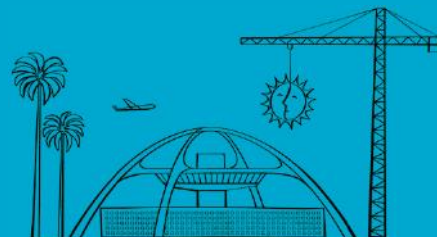


Top: Rendering of Terminal 4.5 Core

Bottom: Elevator / escalator pit foundation work (pictured airside)

Change is in the Air(port).

**LAX** WAY BETTER. REALLY.

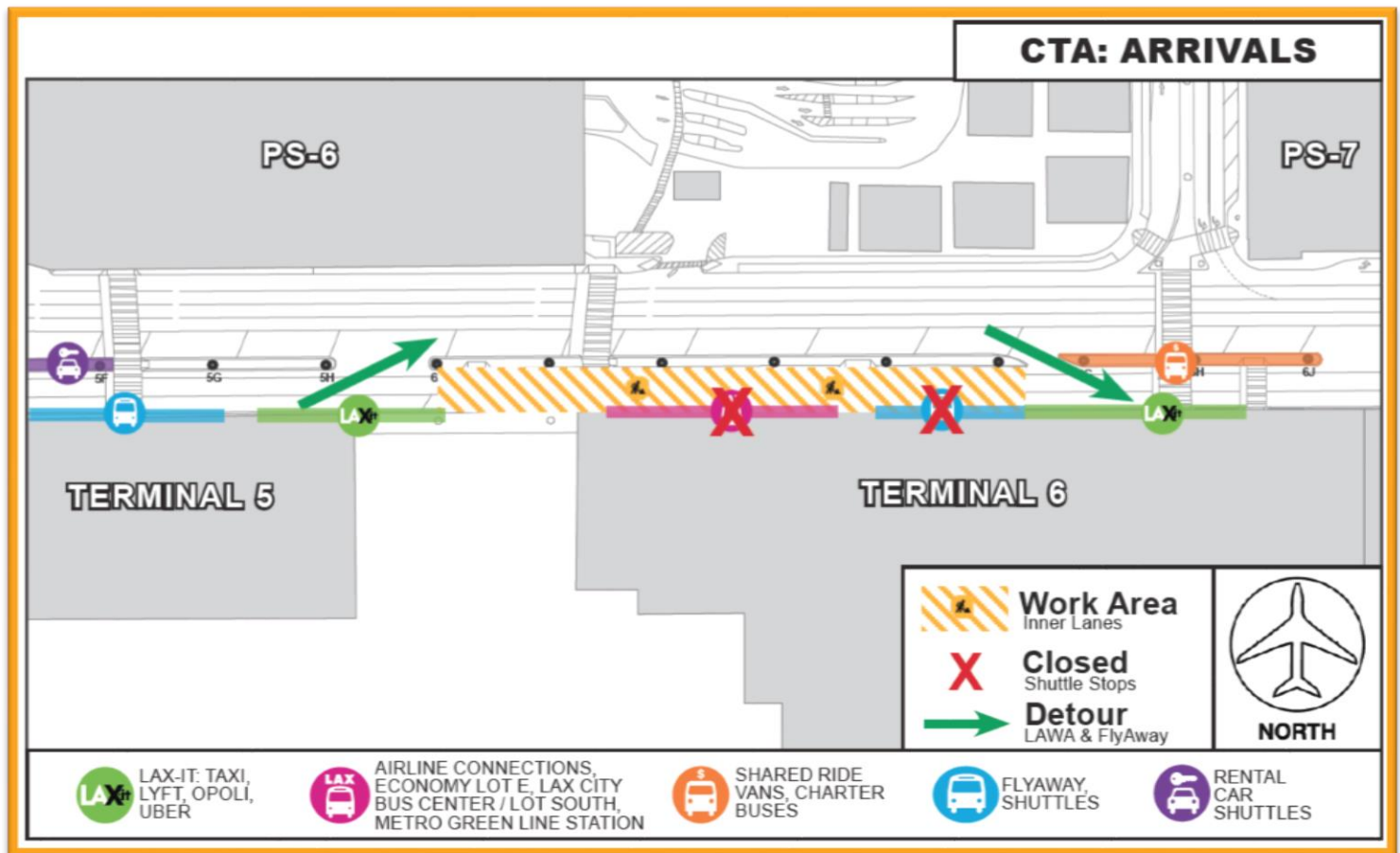


# Construction Hot Topics

Week of August 17, 2020

## 4. CTA Lane Restrictions: Arrivals Level Terminal 5.5

- Nightly closures of all Arrivals Level inner lanes between Terminals 5 and 6 continue this week to facilitate investigative work for the Terminal Cores and APM Interface project
- Inner lane shuttles (LAWA, LAX-it and FlyAway) are exiting at Column 6A and re-enter at Column 6G, and signage is in place guiding pedestrians to the next available shuttle stop as needed
- Work is scheduled to be completed by August 21, 2020



CTA Arrivals Level Nightly Lane Restrictions between Terminal 5 and Terminal 6

Change is in the Air(port).

**LAX** WAY BETTER. REALLY.

